

INCH-POUND

MS27652B
 12 July 2002
 SUPERSEDING
 MS27652A
 13 August 1974

DETAIL SPECIFICATION SHEET

CONNECTORS, RECEPTACLE, ELECTRICAL, WALL MOUNTING
 FLANGE, CRIMP TYPE, BAYONET COUPLING, SERIES I

This specification is approved for use by all Departments
 and Agencies of the Department of Defense.

The requirements for acquiring the product described herein
 shall consist of this specification and MIL-DTL-38999.

Inactive for new design,
 use MS27466

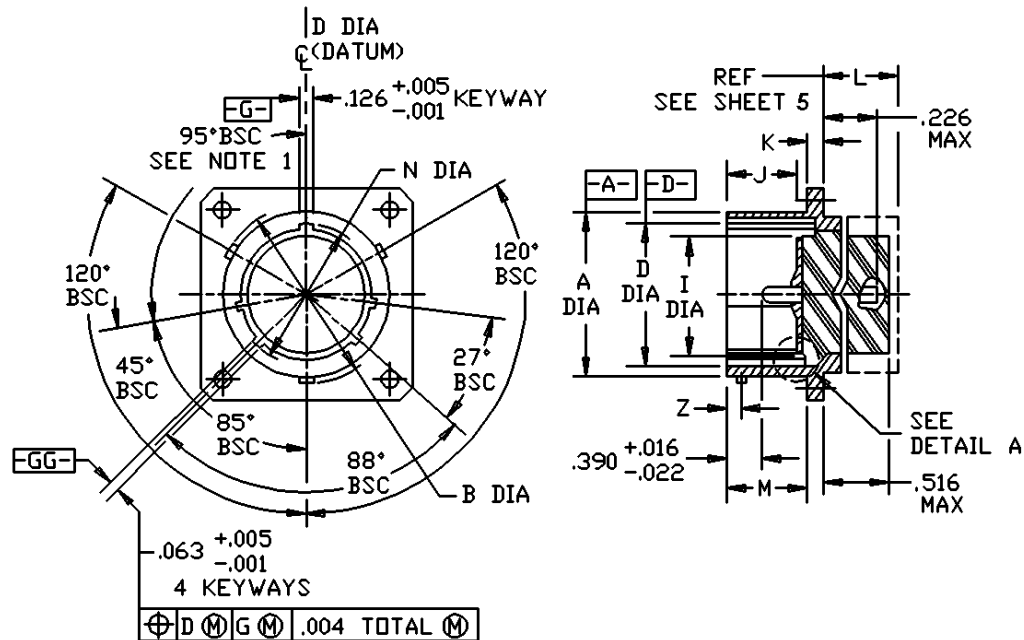


FIGURE 1. Receptacle, classes E and T.

MS27652B

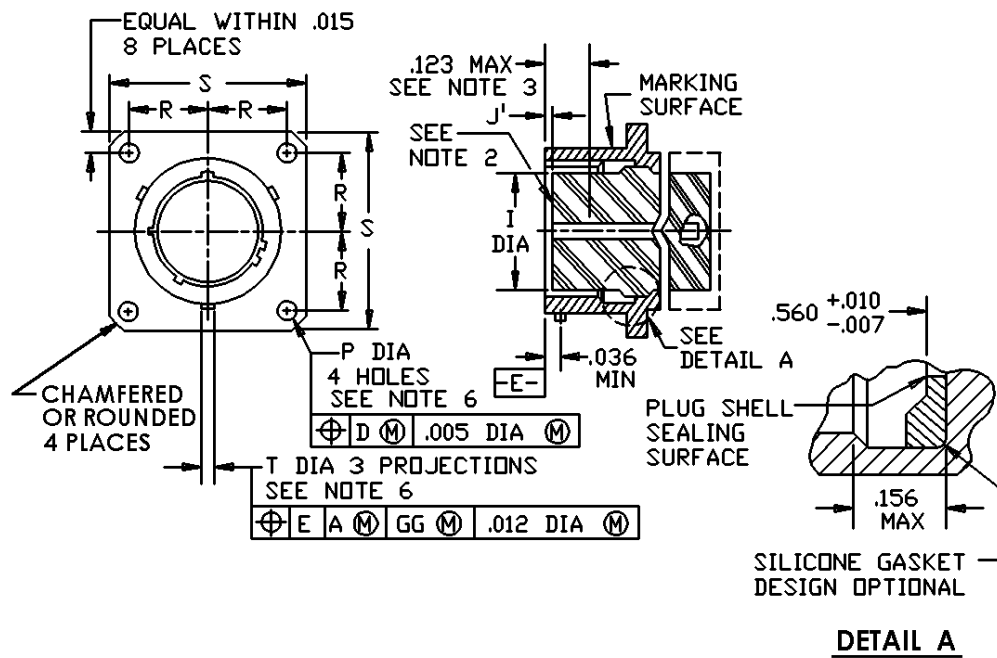


FIGURE 1. Receptacle, classes E and T – Continued.

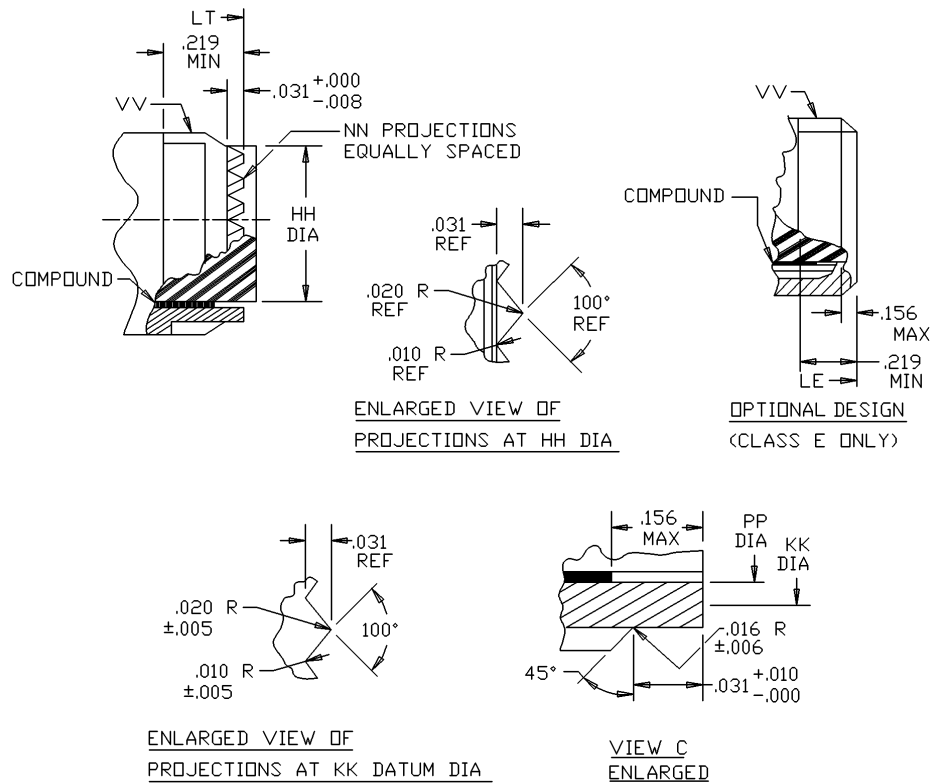
MS27652B

Shell size	A dia +.001 -.005	B dia +.000 -.016	D dia +.005 -.001	I dia max	J +.003 -.010 pin insert	J ¹ +.003 -.010 socket insert	K +.015 -.000	M +.000 -.005
9	.572	.662	.442	.290	.576	.020	.085	.632
11	.700	.810	.570	.418				
13	.850	.960	.687	.532				
15	.975	1.085	.812	.657				
17	1.100	1.210	.937	.782				
19	1.207	1.317	1.042	.871				
21	1.332	1.442	1.167	.996			.115	.602
23	1.457	1.567	1.292	1.121				
25	1.582	1.692	1.417	1.246				

Shell size	N dia +.005 -.006	P dia +.010 -.005	R BSC	S ± .020	T dia +.010 -.005	Z BSC	For insert arrangement see MS DWG
9	.492	.128	.3595	.938	.078	.100	20049, 27525
11	.620		.406	1.031			20050, 27526
13	.769		.453	1.125			20051, 27527
15	.894		.4845	1.219			20052, 27528
17	1.019		.531	1.312			20053, 27529
19	1.124		.578	1.438			20054, 27530
21	1.249		.625	1.562			20055, 27531
23	1.374	.147	.6875	1.688			20056, 27532
25	1.499		.750	1.812	.125	.109	20057, 27533

FIGURE 1. Receptacle, classes E and T – Continued.

MS27652B



Inches	mm	Inches	mm	Inches	mm	Inches	mm
.001	.025	.010	.254	.031	.787	.219	5.562
.004	.102	.012	.305	.036	.914	.266	6.756
.005	.127	.015	.381	.063	1.600	.390	9.906
.006	.152	.016	.406	.123	3.124	.516	13.106
.007	.178	.020	.508	.126	3.200	.560	14.224
.008	.203	.022	.559	.156	3.962		

FIGURE 1. Receptacle, classes E and T - Continued.

MS27652B

Shell size	HH dia +.001 -.005	KK DATUM dia	NN	PP dia ± .003	LE max length	LT max length	VV Thread class 2A UNEF (plated)
9	.387	.366	12	.344	.531	.531	7/16-28
11	.515	.487	16	.472			9/16-24
13	.628	.609	20	.586			11/16-24
15	.754	.731	24	.711			13/16-20
17	.879	.853	28	.836			15/16-20
19	.985	.974	32	.942			1 1/16-18
21	1.110	1.097	36	1.067			1 3/16-18
23	1.235	1.218	40	1.192			1 5/16-18
25	1.360	1.340	44	1.317			1 7/16-18

NOTES:

1. Dimensions are in inches.
2. Metric equivalents are given for general information only.
3. Normal keyway position. For other keyway positions, see figure 6 of MIL-DTL-38999K.
4. Insert front surface shall be flat within .005 Total Indicator Reading (TIR).
5. Diameters A and D shall be concentric within .015 TIR.
6. Diameters D and I shall be concentric within .015 TIR at Maximum Material Condition (MMC).
7. Diameter A with respect to diameter B, and diameter D with respect to diameter N shall be concentric at MMC.
8. The gage features for GG shall be .010 smaller than the MMC size at basic location.
9. The point at which the gage pin, having the same basic diameter as the mating contact and a square face, touches socket contact spring.

FIGURE 1. Receptacle, classes E and T - Continued.

MS27652B

REQUIREMENTS:

Dimensions and configuration: See figure 1.

Interface dimensions shall conform to MIL-DTL-38999.

Mating connectors: MS27467, MS27653 and MS27661.

Insert arrangements: See MIL-STD-1560.

Part or Identifying Number (PIN) example:



CONCLUDING MATERIAL

Custodians:

Army - CR

Navy - AS

Air Force - 11

DLA - CC

Preparing activity:

DLA - CC

(Project 5935-4404)

Review activities:

Army - AR, MI

Navy - EC, MC, OS

Air Force - 19, 99