

INCH-POUND

MS27626A  
29 September 2000  
SUPERSEDING  
MS27626  
17 March 1971

## DETAIL SPECIFICATION SHEET

### NIPPLE, FLARED, TUBE TO HOSE-SWIVEL NUT

This specification is approved for use by all Departments and Agencies of the Department of Defense.

The requirements for acquiring the product described herein shall consist of this specification sheet and MIL-DTL-83296.

#### REQUIREMENTS:

1. Nipples shall be in accordance with figure 1 and table I.
2. Material shall be a corrosion resistant steel, class 305, condition B (accepted classes only), as specified in SAE AMS-QQ-S-763, with a minimum yield strength of 70,000 psi for sizes -4C, -6C, and -8C and a minimum yield strength of 60,000 psi for size -10C.
3. Finish shall be passivated as specified in MIL-DTL-83296.
4. In area X, a dry-film lubricant shall be used as specified in MIL-L-46010. Dry-film lubricant shall be allowed in area Y. Dry-film lubricant shall not extend beyond area Z.
5. Radius or break all corners to .005 +.005/-0.000, unless otherwise specified.
6. All burrs and slivers shall be removed.
7. Surface roughness, in accordance with ASME B46.1, shall not exceed 125  $\mu$ in  $R_a$ , unless otherwise specified.
8. All tolerances shall be  $\pm$ .005, unless otherwise specified.
9. The part number and manufacturer's part number shall be marked in accordance with MIL-DTL-83296.

MS27626A

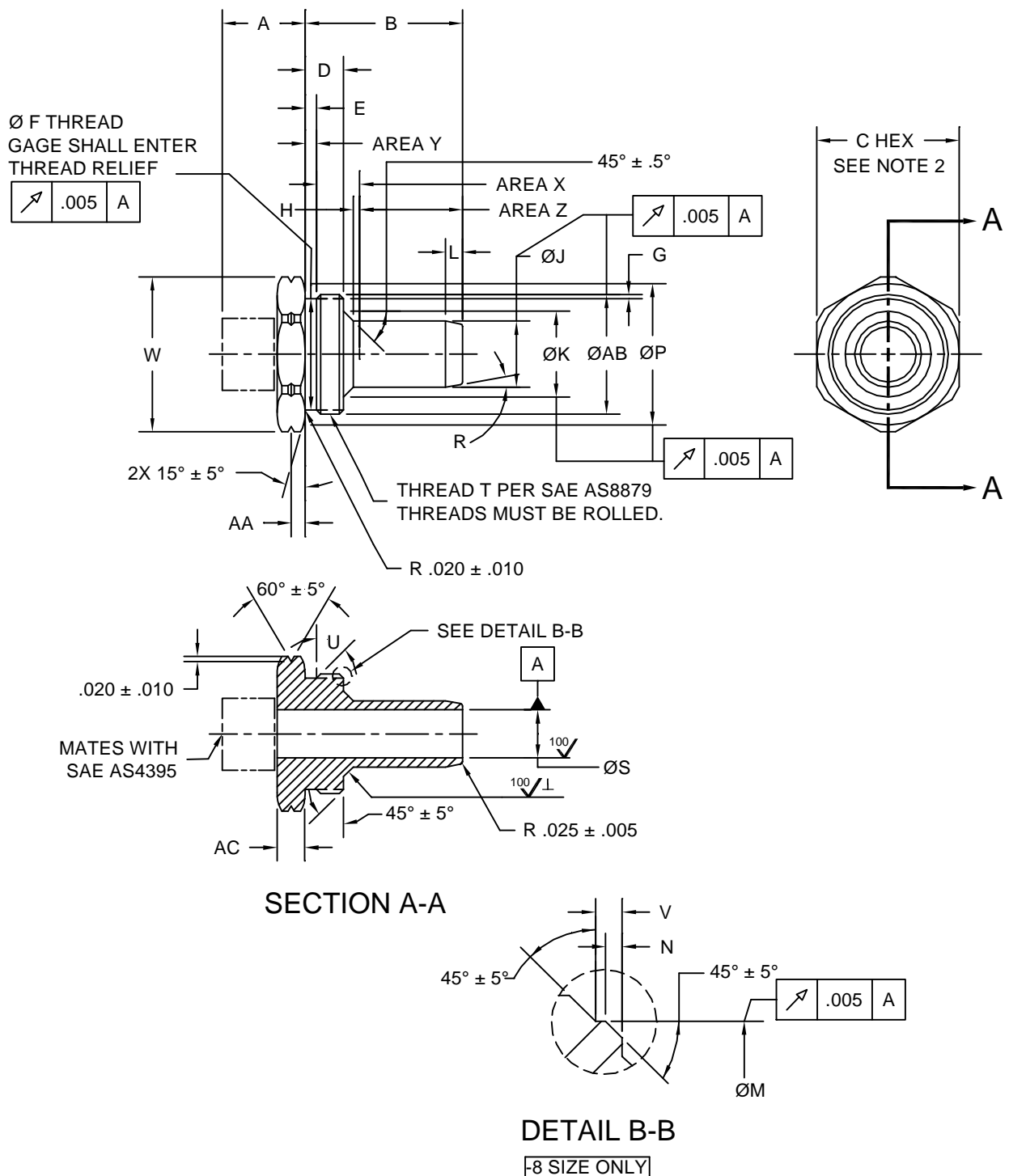


FIGURE 1. Flared, nipple.

## MS27626A

TABLE I. Nipple dimensions.

Part number	A ±.010	B ±.005	C	D ±.005	E ±.005	F ±.005
MS27626-4C	.428	.929	.750	.379	.110	.544
MS27626-6C	.545	.981	.875	.361	.085	.660
MS27626-8C	.630	1.137	1.000	.400	.100	.813
MS27626-10C	.735	1.388	1.250	.338	.100	.989

TABLE I. Nipple dimensions - Continued.

Part number	G ±.005	H ±.050	J +.000 -.005	K ±.005	L ±.005	M ±.010	N ±.005
MS27626-4C	.041	.100	.250	.420	-	-	-
MS27626-6C	.043		.343	.495	-	-	-
MS27626-8C	-		.445	.610	-	.783	.030
MS27626-10C	.037		.588	.762	.150	-	-

TABLE I. Nipple dimensions - Continued.

Part number	P ±.02	R ±.5°	S ±.005	Thread T	Pitch diameter
MS27626-4C	.72	-	.161	5/8-18UNJF-3A	.5889/.5854
MS27626-6C	.84	-	.271	3/4-16UNJF-3A	.7094/.7056
MS27626-8C	.97	-	.375	7/8-24UNJS-3A	.8479/.8448
MS27626-10C	1.22	10°	.465	1 1/16-20UNJ-3A	1.0300/1.0266

TABLE I. Nipple dimensions - Continued.

Part number	U ±5°	V ±.005	W ±.005	AA ±.005	AB		AC ±.005
MS27626-4C	45°	-	.825	.069	.625	+.000 -.009	.138
MS27626-6C		-	.962	.092	.750		.185
MS27626-8C	30°	.050	1.100	.095	.875	+.000 -.007	.190
MS27626-10C	45°	-	1.375	.125	1.062	+.000 -.008	.250

## NOTES:

1. Dimensions are in inches, unless otherwise specified.
2. For dimension C, use commercial stock size tolerances as specified in SAE AMS2241M.
3. This part is for use with MIL-DTL-83298 hose.
4. This specification sheet takes precedence over documents referenced herein.
5. This is a design specification sheet for manufacturing purposes. The item is only procured as an integral part of adapter assembly.

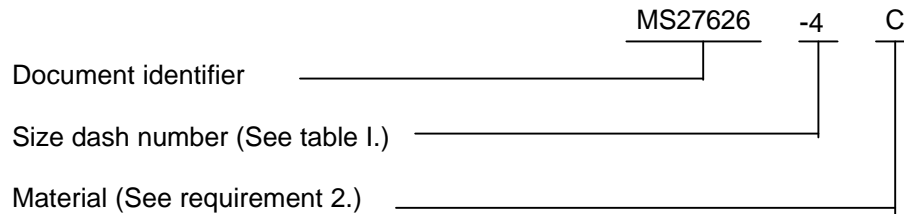
# MS27626A

6. Referenced documents shall be of the issue listed in the issue of the Department of Defense Index of Specifications and Standards (DoDISS) and supplement thereto, cited in the solicitation.

7. Dimensioning and tolerancing are in accordance with ASME Y14.5M-1994.

8. Part or Identifying Number (PIN):

Example of a PIN: MS27626-4C.



9. Next assembly is MS27619.

## Custodians:

Air Force - 99  
 Army - AV  
 Navy - AS  
 DLA - CC

## Preparing activity:

DLA - CC

(Project 4730-1040-022)

## Review activities:

Air Force - 82  
 Navy - MC, SA