

INCH-POUND

MS27559E
 14 August 2009
 SUPERSEDING
 MS27559D
 6 February 2004

DETAIL SPECIFICATION SHEET
 SUPPORT, CABLE, RIGHT ANGLE

Inactive for new design after 14 November 1977.

This specification is approved for use by all Departments
 and Agencies of the Department of Defense.

The requirements for acquiring the product described herein
 shall consist of this specification sheet and MIL-DTL-26500.

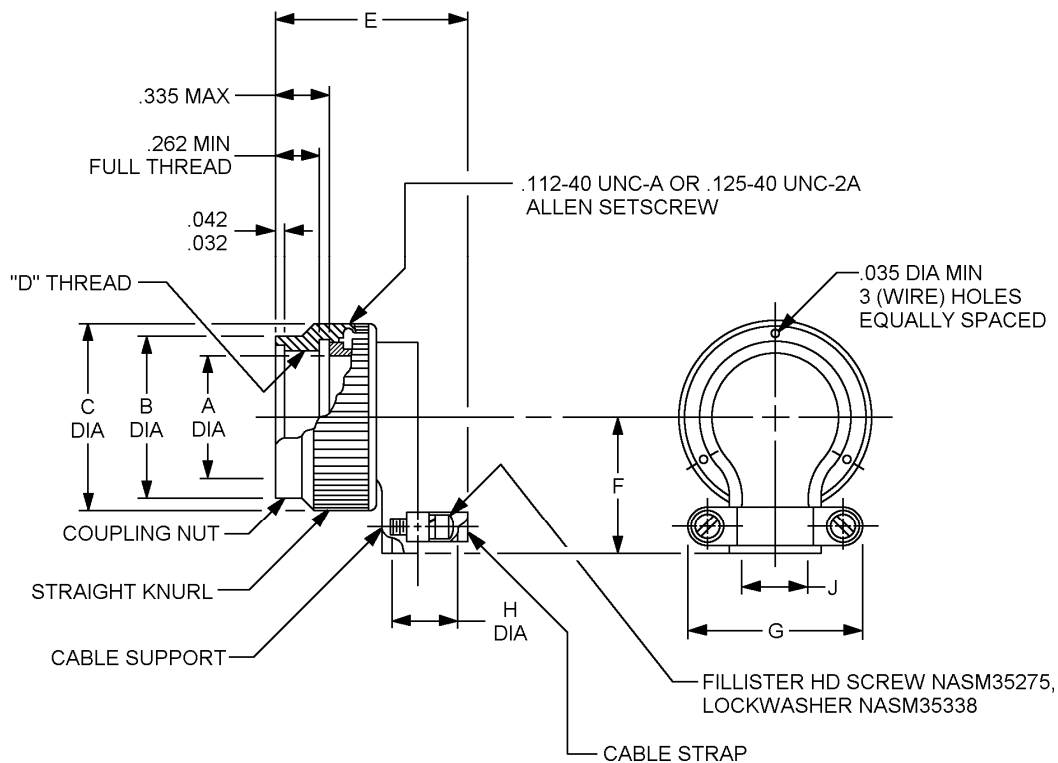


FIGURE 1. Dimensions and configuration.

MS27559E

MS Part or Identifying Number (PIN)	Size	A dia	B dia max	C dia max	D thread UNEF-2B
MS27559-1	8	.348	.532	.672	.4375-28
MS27559-2	10	.440	.657	.797	.5625-24
MS27559-3	12	.600	.845	1.016	.750-20
MS27559-4	14	.684	.907	1.110	.8125-20
MS27559-5	16	.789	1.032	1.234	.9375-20
MS27559-6	18	.922	1.157	1.360	1.0625-18
MS27559-7	20	1.053	1.282	1.485	1.1875-18
MS27559-8	22	1.172	1.407	1.610	1.3125-18
MS27559-9	24	1.302	1.532	1.735	1.4375-18

MS PIN	E max	F max	G max	H max	J dia max
MS27559-1	1.200	.602	.892	.201	.245
MS27559-2	1.320	.650	1.072	.328	.370
MS27559-3	1.320	.740	1.072	.388	.370
MS27559-4	1.487	.775	1.108	.452	.520
MS27559-5	1.470	.830	1.108	.508	.520
MS27559-6	1.588	.897	1.233	.571	.645
MS27559-7	1.759	.955	1.477	.748	.780
MS27559-8	1.759	1.015	1.477	.748	.780
MS27559-9	2.027	1.077	1.727	.996	1.065

FIGURE 1. Dimensions and configuration - Continued.

MS27559E

Inches	mm	Inches	mm	Inches	mm	Inches	mm	Inches	mm
.010	.25	.520	13.21	.789	20.04	1.065	27.05	1.360	34.54
.032	.81	.532	13.51	.797	20.24	1.072	27.23	1.407	35.74
.035	.89	.571	14.50	.830	21.08	1.077	27.36	1.443	36.65
.042	1.07	.600	15.24	.845	21.46	1.108	28.14	1.460	37.08
.201	5.11	.602	15.29	.892	22.66	1.110	28.19	1.477	37.52
.245	6.22	.645	16.38	.897	22.78	1.157	29.39	1.485	37.72
.262	6.65	.650	16.51	.907	23.04	1.172	29.77	1.532	38.91
.328	8.33	.657	16.69	.922	23.42	1.173	29.79	1.561	39.65
.335	8.51	.672	17.07	.955	24.26	1.233	31.32	1.610	40.89
.348	8.84	.684	17.37	.996	25.30	1.234	31.34	1.727	43.87
.370	9.40	.740	18.80	1.015	25.78	1.282	32.56	1.732	43.99
.440	11.18	.748	19.00	1.016	25.81	1.293	32.84	1.735	44.07
.452	11.48	.775	19.68	1.032	26.21	1.302	33.07	2.000	50.80
.508	12.90	.780	19.81	1.053	26.75				

NOTES:

1. Dimensions are in inches.
2. Metric equivalents are given for information only.
3. Unless otherwise specified, tolerances are ± 0.010 .

FIGURE 1. Dimensions and configuration – Continued.

MS27559E

REQUIREMENTS

Dimensions and construction:

Dimensions and configuration: See figure 1.

Coupling nut securely captivated to cable support and has provisions for locking in an indexed position.

Materials and finishes:

Aluminum components anodized in accordance with MIL-A-8625 or suitable hard anodizing process to meet the performance requirements of MIL-DTL-26500.

Cable support material: Aluminum alloy in accordance with ASTM-B26/B26M, composition 13, A13, A380, or 380.

Coupling nut material: Aluminum alloy in accordance with ASTM-B211 or SAE-AMS-QQ-A-367.

Threads shall be in accordance with MIL-S-7742.

PIN: MS27559- (see figure 1 for dash numbers).

Changes from previous issue. Marginal notations are not used in this revision to identify changes with respect to the previous issue due to the extent of the changes.

Referenced documents. In addition to MIL-DTL-26500, this document references the following:

ASTM-B26/B26M
ASTM-B211
MIL-A-8625
MIL-S-7742
SAE-AMS-QQ-A-367
NASM35275
NASM35338

MS27559E

CONCLUDING MATERIAL

Custodians:
Air Force – 85
DLA – CC

Preparing activity:
DLA – CC

Review activity:
Air Force – 99

(Project 5935-2009-124)

NOTE: The activities listed above were interested in this document as of the date of this document. Since organizations and responsibilities can change, you should verify the currency of the information above using the ASSIST Online database at <http://assist.daps.dla.mil>.