

[INCH-POUND]

MS27559C(USAF)
31 January 1994
 SUPERSEDING
 MS27559B(USAF)
 14 November 1977

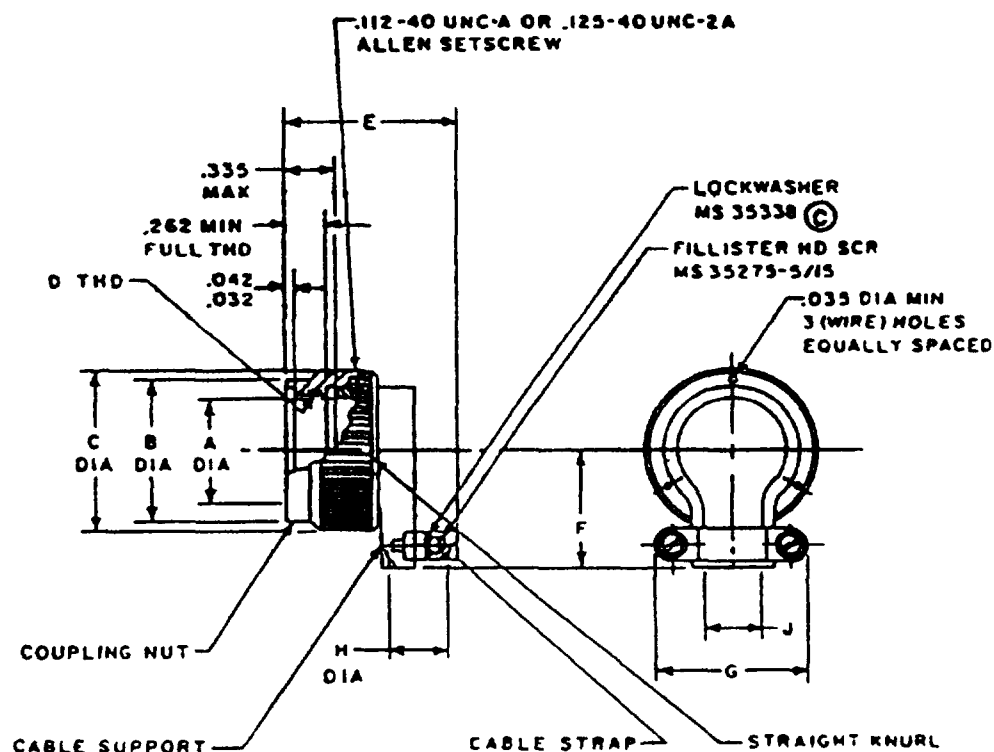
MILITARY SPECIFICATION SHEET

SUPPORT, CABLE, RIGHT ANGLED

This specification is approved for use by all Departments of the Air Force and is available for use by all Departments and Agencies of the Department of Defense.

The requirements for acquiring the product described herein shall consist of this specification sheet and the issue of the following specification listed in that issue of the Department of Defense Index of Specifications and Standards (DODISS) specified in the solicitation: MIL-C-26500.

Inactive For Airforce New Design Equipment or Modification of Existing Equipment after 14 November 1977. No Superseding Standard

FIGURE 1. Dimensions and configuration

(C) denotes changes

AMSC N/A

DISTRIBUTION STATEMENT A

1 of 3

Approved for public release, distribution is unlimited

FSC 5935

MS27559C (USAF)

MS PART NUMBER	SIZE	A DIA	B DIA MAX	C DIA MAX	D THREAD UNEF-28	E MAX	F MAX	G MAX	H MAX	J DIA MAX	MAXIMUM WEIGHT IN POUNDS
MS27559-1	8	.348	.532	.672	.4375-28	1.173	.802	.892	.201	.245	
MS27559-2	10	.440	.657	.797	.5625-24	1.293	.650	1.072	.328	.370	
MS27559-3	12	.600	.845	1.016	.750-20	1.293	.740	1.072	.388	.370	
MS27559-4	14	.684	.907	1.110	.875-20	1.460	.775	1.108	.452	.520	
MS27559-5	16	.789	1.032	1.234	.9375-20	1.443	.830	1.108	.608	.520	
MS27559-6	18	.922	1.157	1.360	1.0625-18	1.561	.897	1.233	.571	.645	
MS27559-7	20	1.053	1.282	1.485	1.1875-18	1.732	.955	1.477	.748	.780	
MS27559-8	22	1.172	1.407	1.610	1.3125-18	1.732	1.015	1.477	.748	.780	
MS27559-9	24	1.302	1.532	1.735	1.4375-18	2.000	1.077	1.727	.996	1.065	

INCHES	MM	INCHES	MM	INCHES	MM	INCHES	MM	INCHES	MM
.010	25	.520	13.21	.789	20.04	1.065	27.05	1.407	35.74
.032	81	.532	13.51	.797	20.24	1.072	27.23	1.443	36.65
.035	89	.571	14.50	.830	21.08	1.077	27.36	1.460	37.08
.042	1.07	.600	15.24	.845	21.46	1.108	28.14	1.477	37.52
.201	5.11	.602	15.29	.892	22.66	1.110	28.19	1.485	37.72
.245	6.22	.645	16.38	.897	22.78	1.157	29.39	1.532	38.91
.262	6.65	.650	16.51	.907	23.04	1.172	29.77	1.561	39.65
.328	8.33	.657	16.69	.922	23.42	1.173	29.79	1.610	40.89
.335	8.61	.672	17.07	.955	24.26	1.233	31.32	1.727	43.87
.348	8.84	.684	17.37	.996	25.30	1.234	31.34	1.732	43.99
.370	9.40	.740	18.80	1.015	25.78	1.282	32.56	1.735	44.07
.440	11.18	.748	19.00	1.016	25.81	1.293	32.84	2.000	50.80
.452	11.48	.775	19.68	1.032	26.21	1.302	33.07		
.608	12.90	.780	19.81	1.053	26.75	1.360	34.54		

NOTES:

1. Dimensions are in inches.
2. Metric equivalents are given for general information only.
3. Unless otherwise specified, tolerances are ± 0.010

FIGURE 1 Dimensions and configuration - Continued.

MS27559C(USAF)

REQUIREMENTS:

Design and construction

Dimensions and configuration: See figure 1.

Coupling nut securely captivated to cable support and has provisions for locking in an indexed position

Material and finish.

Aluminum components: Anodize in accordance with MIL-A-8625 or suitable hard anodizing process to meet the performance requirements of MIL-C-26500

Cable support material Aluminum alloy in accordance with QQ-A-591 composition 13, A13, A380, or 380

Coupling nut material Aluminum alloy in accordance with QQ-A-225 or QQ-A-367

Threads In accordance with MIL-S-7742

CONCLUDING MATERIAL

Custodian

Air Force - 85

Review activities

Air Force - 17, 99

DLA - ES

Preparing activity

Air Force - 85

Agent

DLA - ES .

(Project 5935-F514)