

INCH-POUND

MS27558E
 14 August 2009
 SUPERSEDING
 MS27558D
 06 February 2004

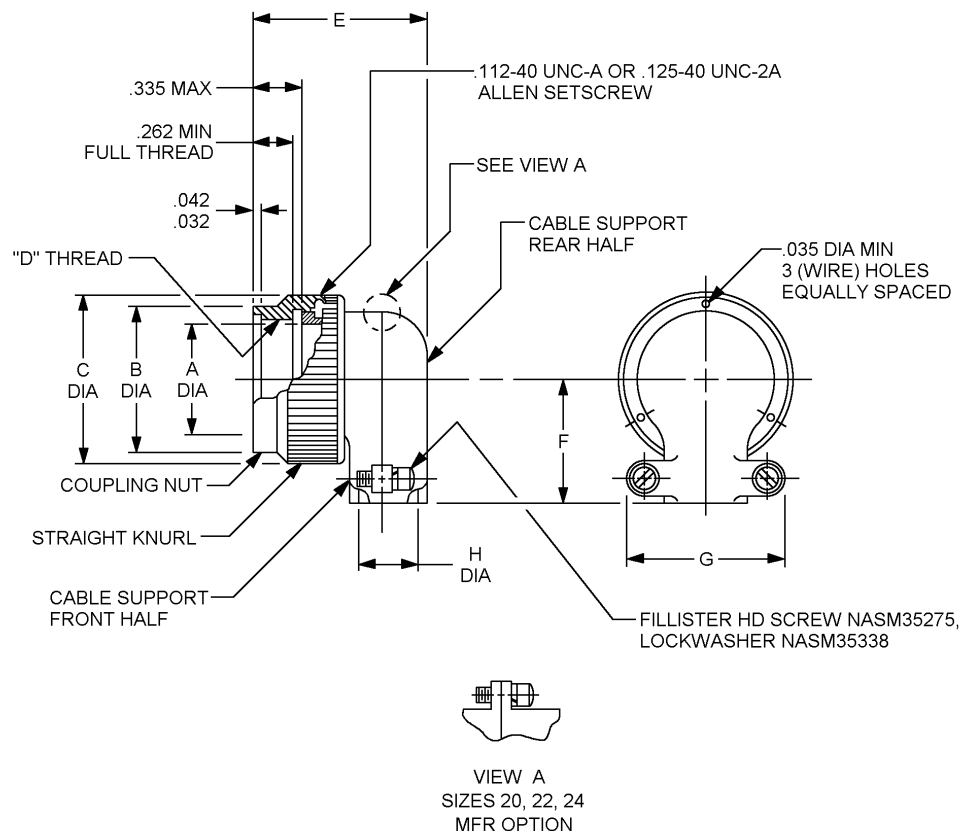
DETAIL SPECIFICATION SHEET

SUPPORT, CABLE, RIGHT ANGLE, CLOSED

Inactive for new design after 14 November 1977.

This specification is approved for use by all Departments
 and Agencies of the Department of Defense.

The requirements for acquiring the product described herein
 shall consist of this specification sheet and MIL-DTL-26500.

FIGURE 1. Dimensions and configuration.

MS27558E

MS Part or Identifying Number (PIN)	Size	A dia	B dia max	C dia max
MS27558-1	8	.348	.532	.672
MS27558-2	10	.440	.657	.797
MS27558-3	12	.600	.845	1.016
MS27558-4	14	.684	.907	1.110
MS27558-5	16	.789	1.032	1.234
MS27558-6	18	.922	1.157	1.360
MS27558-7	20	1.053	1.282	1.485
MS27558-8	22	1.172	1.407	1.610
MS27558-9	24	1.302	1.532	1.735

MS PIN	D Thread UNEF-2B	E max	F max	G max	H dia
MS27558-1	.4375-28	1.200	.602	.892	.240
MS27558-2	.5625-24	1.320	.650	1.072	.365
MS27558-3	.750-20	1.320	.740	1.072	.365
MS27558-4	.8125-20	1.487	.775	1.108	.515
MS27558-5	.9375-20	1.470	.830	1.108	.515
MS27558-6	1.0625-18	1.588	.897	1.233	.640
MS27558-7	1.1875-18	1.759	.955	1.477	.775
MS27558-8	1.3125-18	1.759	1.015	1.477	.775
MS27558-9	1.4375-18	2.027	1.077	1.727	1.060

FIGURE 1. Dimensions and configuration.

MS27558E

Inches	mm	Inches	mm	Inches	mm	Inches	mm	Inches	mm
.010	.25	.532	13.51	.830	21.08	1.072	27.23	1.360	34.54
.032	.81	.600	15.24	.845	21.46	1.077	27.36	1.407	35.74
.035	.89	.602	15.29	.892	22.66	1.108	28.14	1.470	37.34
.042	1.07	.640	16.26	.997	22.78	1.110	28.19	1.477	37.52
.240	6.10	.650	16.51	.907	23.04	1.157	29.39	1.485	37.72
.262	6.65	.657	16.69	.922	23.42	1.172	29.77	1.532	38.91
.335	8.51	.672	17.07	.955	24.26	1.200	30.48	1.588	40.34
.348	8.84	.684	17.37	1.015	25.78	1.233	31.32	1.610	40.89
.365	9.27	.740	18.80	1.016	25.81	1.234	31.34	1.727	43.87
.440	11.18	.775	19.68	1.032	26.21	1.282	32.56	1.735	44.07
.487	12.37	.789	20.04	1.053	26.75	1.302	33.07	1.750	44.45
.515	13.08	.797	20.24	1.060	26.92	1.320	33.53	2.027	51.49

NOTES:

1. Dimensions are in inches.
2. Metric equivalents are given for general information only.
3. Unless otherwise specified, tolerances are $\pm .010$.

FIGURE 1. Dimensions and configuration – Continued.

MS27558E

REQUIREMENTS

Design and construction:

Dimensions and configuration: See figure 1.

Coupling nut securely captivated to cable support and has provisions for locking in an indexed position.

Material and finish:

Aluminum components anodized in accordance with MIL-A-8625 or suitable hard anodizing process to meet the performance requirements of MIL-DTL-26500.

Cable support material: Aluminum alloy in accordance with ASTM-B26/B26M, composition 13, A13, A380, or 380.

Coupling nut material: Aluminum alloy in accordance with ASTM-B211 or SAE-AMS-QQ-A-367.

Threads shall be in accordance with MIL-S-7742.

PIN: MS27558- (see figure 1 tables for dash numbers).

Changes from previous issue. Marginal notations are not used in this revision to identify changes with respect to the previous issue due to the extent of the changes.

Referenced documents. In addition to MIL-DTL-26500, this document references the following:

ASTM-B26/B26M
ASTM-B211
MIL-A-8625
MIL-S-7742
SAE-AMS-QQ-A-367
NASM35275
NASM35338

MS27558E

CONCLUDING MATERIAL

Custodians:

Air Force - 85
DLA – CC

Preparing activity:

DLA – CC

Review activity:

Air Force - 99

(Project 5935–2009-123)

NOTE: The activities listed above were interested in this document as of the date of this document. Since organizations and responsibilities can change, you should verify the currency of the information above using the ASSIST Online database at <http://assist.daps.dla.mil>.