

[INCH-POUND]

MS27558C(USAF)

31 January 1994

SUPERSEDING

MS27558B(USAF)

14 November 1977

## MILITARY SPECIFICATION SHEET

## SUPPORT, CABLE RIGHT ANGLE, CLOSED

This specification is approved for use by the department of the Air Force and is available all Departments and Agencies of the Department of Defense.

The requirements for acquiring the product described herein shall consist of this specification sheet and the issue of the following specification listed in that issue of the Department of Defense Index of Specifications and Standards (DODSS) specified in the solicitation: MIL-C-20500.

Inactive For Airforce New Design Equipment or Modification of Existing Equipment after 14 November 1977. No Superseding Standard

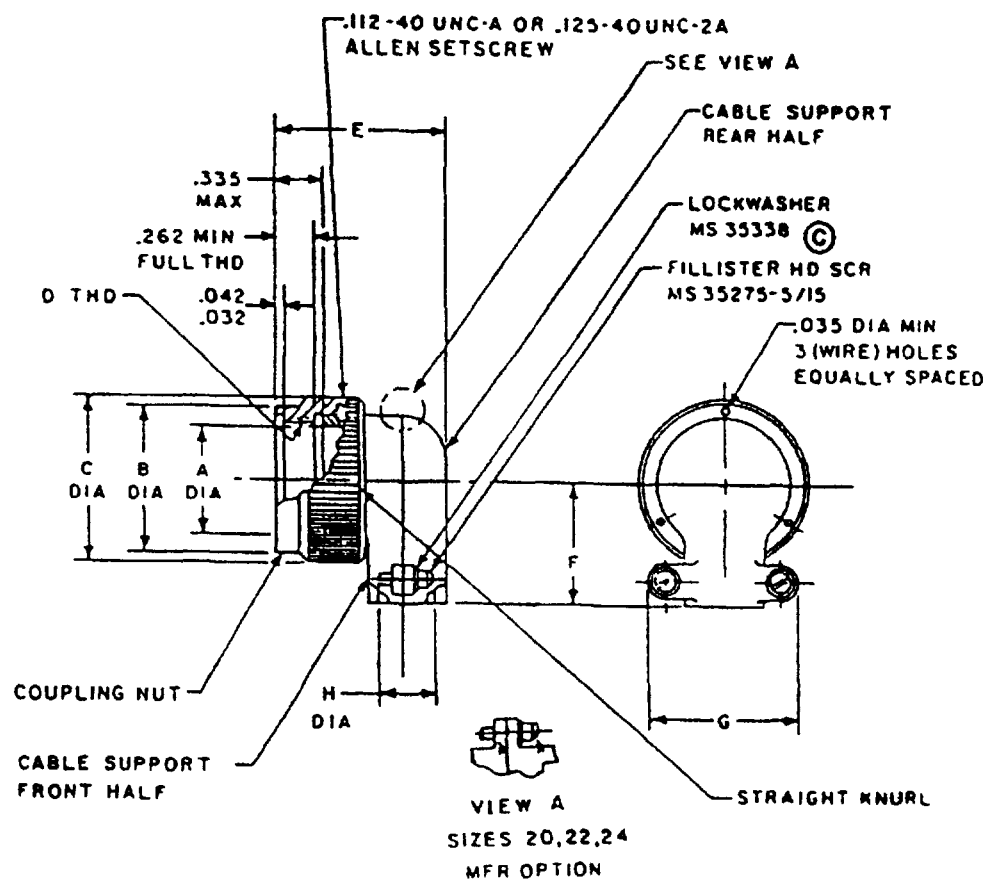


FIGURE 1 Dimensions and configuration

C denotes changes

## MS27558C(USAF)

MS PART NUMBER	SIZE	A DIA	B DIA MAX	C DIA MAX	D THREAD UNEF-28	E MAX	F MAX	G MAX	H DIA	MAXIMUM WEIGHT IN POUNDS
MS27558-1	8	.348	.532	.672	4375-28	1.200	.602	.892	.240	
MS27558-2	10	.440	.657	.797	5625-24	1.320	.650	1.072	.365	
MS27558-3	12	.600	.845	1.016	750-20	1.320	.740	1.072	.365	
MS27558-4	14	.684	.907	1.110	8125-20	1.487	.775	1.108	.515	
MS27558-5	16	.789	1.032	1.234	9375-20	1.470	.830	1.108	.515	
MS27558-6	18	.922	1.157	1.360	1.0625-18	1.588	.897	1.233	.640	
MS27558-7	20	1.053	1.282	1.485	1.1875-18	1.759	.955	1.477	.775	
MS27558-8	22	1.172	1.407	1.610	1.3125-18	1.759	1.015	1.477	.775	
MS27558-9	24	1.302	1.532	1.735	1.4375-18	2.027	1.077	1.727	1.060	

INCHES	MM	INCHES	MM	INCHES	MM	INCHES	MM	INCHES	MM
.010	.25	.532	13.51	.830	21.08	1.072	27.23	1.360	34.54
.032	.81	.600	15.24	.845	21.46	1.077	27.36	1.407	35.74
.035	.89	.602	15.29	.892	22.66	1.108	28.14	1.470	37.34
.042	1.07	.640	16.26	.897	22.78	1.110	28.19	1.477	37.52
.240	6.10	.650	16.51	.907	23.04	1.157	29.39	1.485	37.72
.262	6.65	.657	16.69	.922	23.42	1.172	29.77	1.532	38.91
.335	8.51	.672	17.07	.955	24.26	1.200	30.48	1.588	40.34
.348	8.84	.684	17.37	1.015	25.78	1.233	31.32	1.610	40.89
.365	9.27	.740	18.80	1.016	25.81	1.234	31.34	1.727	43.87
.440	11.18	.775	19.68	1.032	26.21	1.282	32.56	1.735	44.07
.487	12.37	.789	20.04	1.053	26.75	1.302	33.07	1.750	44.45
.515	13.08	.797	20.24	1.060	26.92	1.320	33.53	2.027	51.49

## NOTES

1. Dimensions are in inches.
2. Metric equivalents are given for general information only
3. Unless otherwise specified, tolerances are  $\pm .010$ .

FIGURE 1. Dimensions and configuration - Continued.

MS27558C(USAF)

## REQUIREMENTS

### Design and construction

Dimensions and configuration See figure 1

Coupling nut securely captivated to cable support and has provisions for locking in an indexed position

### Material and finish

Aluminum components Anodize in accordance with MIL-A-8625 or suitable hard anodizing process to meet the performance requirements of MIL-C-26500

Cable support material Aluminum alloy in accordance with QQ-A-591 composition 13, A13, A380, or 380

Coupling nut material Aluminum alloy in accordance with QQ-A-225 or QQ-A-367

Threads In accordance with MIL-S-7742.

## CONCLUDING MATERIAL

### Custodian

Air Force - 85

### Review activities

Air Force - 17, 99

DLA - ES

### Preparing activity

Air Force - 85

### Agent

DLA - ES

(Project 5935-F513)