

INCH-POUND

MS27515C
w/AMENDMENT 1
8 February 2008
SUPERSEDING
MS27515C
12 July 2002

DETAIL SPECIFICATION SHEET

CONNECTORS, RECEPTACLE, ELECTRICAL, CRIMP TYPE,
BACK PANEL, WALL MOUNTING FLANGE, SERIES I

Inactive for new design after 7 July 1971. For new design,
use MS27656.

This specification is approved for use by all Departments
and Agencies of the Department of Defense.

The requirements for acquiring the product described herein
shall consist of this specification and MIL-DTL-38999.

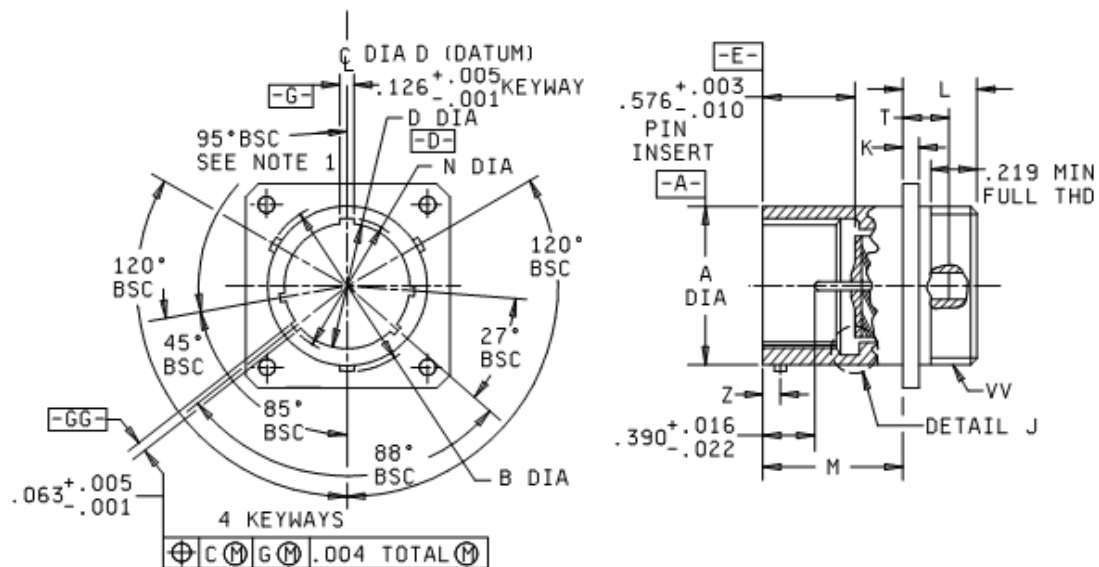


FIGURE 1. Receptacle, class E.

MS27515C
w/Amendment 1

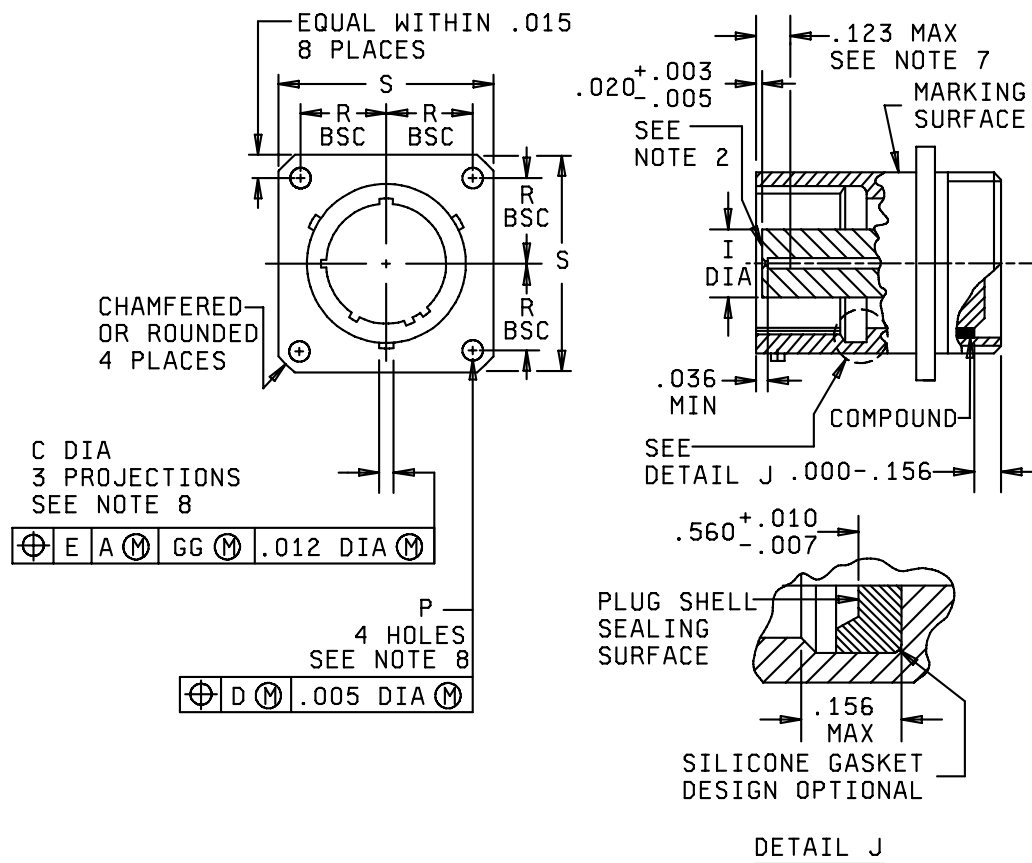


FIGURE 1. Receptacle, class E - Continued.

MS27515C
w/Amendment 1

Shell size	A dia +.001 -.005	B dia +.000 -.016 over projection	C dia +.006 -.002	D dia +.005 -.001	I max dia	K +.015 -.000	L max	M +.000 -.005	N dia +.005 -.006
9	.572	.662	.078	.442	.290	.085	.469	.820	.492
11	.700	.810		.570	.418				.620
13	.850	.960		.687	.532				.769
15	.975	1.085		.812	.657				.894
17	1.100	1.210		.937	.782				1.019
19	1.207	1.317		1.042	.871				1.124
21	1.332	1.442		1.167	.996				1.249
23	1.457	1.567	.125	1.292	1.121	.115	.500	.790	1.374
25	1.582	1.692		1.417	1.246				1.499

Shell size	P dia +.010 -.005	R BSC	S ±.020	T max	Z BSC	VV THD class 2A (plated)	For insert arrangement see MIL-STD-1560
9	.128	.3595	.938	.156	.100	.5625-24UNEF	
11		.406	1.031			.6875-24UNEF	
13		.453	1.125			.8125-20UNEF	
15		.4845	1.219			.9375-20UNEF	
17		.531	1.312			1.0625-18UNEF	
19		.578	1.438			1.1875-18UNEF	
21	.147	.625	.188	.109	1.3125-18UNEF		
23		.6875			1.688	1.4375-18UNEF	
25		.750			1.812	1.5625-18UNEF	

FIGURE 1. Receptacle, class E - Continued.

MS27515C
w/Amendment 1

Inches	mm	Inches	mm	Inches	mm	Inches	mm
.000	0.00	.147	3.73	.662	16.81	1.124	28.55
.001	0.03	.156	3.96	.687	17.45	1.125	28.58
.002	0.05	.188	4.78	.6875	17.46	1.167	29.64
.003	0.08	.219	5.56	.700	17.78	1.207	30.66
.004	0.10	.290	7.37	.750	19.05	1.210	30.73
.005	0.13	.3595	9.13	.769	19.53	1.219	30.96
.006	0.15	.390	9.91	.782	19.86	1.246	31.65
.007	0.18	.406	10.31	.790	20.07	1.249	31.72
.010	0.25	.418	10.62	.810	20.57	1.292	32.82
.012	0.30	.442	11.23	.812	20.62	1.312	33.32
.015	0.38	.453	11.51	.820	20.83	1.317	33.45
.016	0.41	.469	11.91	.850	21.59	1.332	33.83
.020	0.51	.4845	12.31	.871	22.12	1.374	34.90
.022	0.56	.492	12.50	.894	22.71	1.417	35.99
.036	0.91	.500	12.70	.937	23.80	1.438	36.53
.063	1.60	.531	13.49	.938	23.83	1.442	36.63
.078	1.98	.532	13.51	.960	24.38	1.457	37.01
.085	2.16	.560	14.22	.975	24.77	1.499	38.07
.100	2.54	.570	14.48	.996	25.30	1.562	39.67
.109	2.77	.572	14.53	1.019	25.88	1.567	39.80
.115	2.92	.576	14.63	1.031	26.19	1.582	40.18
.123	3.12	.578	14.68	1.042	26.47	1.688	42.88
.125	3.18	.620	15.75	1.085	27.56	1.692	42.98
.126	3.20	.625	15.88	1.100	27.94	1.812	46.02
.128	3.25	.657	16.69	1.121	28.47		

NOTES:

1. Normal keyway position. For other keyway positions, see MIL-DTL-38999.
2. Insert front surface shall be flat within .005 Total Indicator Reading (TIR).
3. Diameters A and D shall be concentric within .015 TIR.
4. Diameters D and I shall be concentric within .015 TIR at Maximum Material Condition (MMC).
5. Diameter A with respect to diameter B, and diameter D with respect to diameter N, shall be concentric at MMC.
6. Dimensions are in inches. Metric equivalent are given for information only.
7. The point at which a gauge pin, having the same basic diameter as the mating contact and a square face, touches socket contact spring.
8. The gauge features for GG shall be .010 (0.25 mm) smaller than the MMC size at basic location.

FIGURE 1. Receptacle, class E - Continued.

MS27515C
w/Amendment 1

REQUIREMENTS:

Dimensions and configuration: See figure 1.
Interface dimensions shall conform to MIL-DTL-38999.
Mating connectors: MS27467, MS27653 and MS27661.
Insert arrangements: See MIL-STD-1560.

Part or Identifying Number (PIN) example:

	<u>MS27515</u>	<u>E</u>	<u>15</u>	<u>A</u>	<u>18</u>	<u>P</u>	<u>A</u>
MS number							
Class							
Shell size							
Finish							
Insert arrangement							
Contact style							
Polarizing positions							
no letter is required for normal.							

Amendment notations. Marginal notations are not used in this revision to identify changes with respect to the previous issue due to the extent of the changes.

Referenced documents. In addition to MIL-DTL-38999, this document references the following:

MS27653
MS27467
MS27656
MS27661
MIL-STD-1560

MS27515C
w/Amendment 1

CONCLUDING MATERIAL

Custodians:

Army - CR
Navy - AS
Air Force - 11
DLA - CC

Preparing activity:

DLA - CC

(Project 5935-2007-167)

Review activities:

Army - AR, MI
Navy - EC, MC, OS
Air Force - 19, 99

NOTE: The activities listed above were interested in this document as of this document. Since organizations and responsibilities can change, you should verify the currency of the information above using the ASSIST Online database at <http://assist.daps.dla.mil>.