

INCH-POUND

MS27515C  
 12 July 2002  
 SUPERSEDING  
 MS27515B  
 7 July 1971

DETAIL SPECIFICATION SHEET

CONNECTORS, RECEPTACLE, ELECTRICAL, CRIMP TYPE,  
 BACK PANEL, WALL MOUNTING FLANGE, SERIES I

This specification is approved for use by all Departments  
 and Agencies of the Department of Defense.

The requirements for acquiring the product described herein  
 shall consist of this specification and MIL-DTL-38999.

Inactive for new design,  
 use MS27656

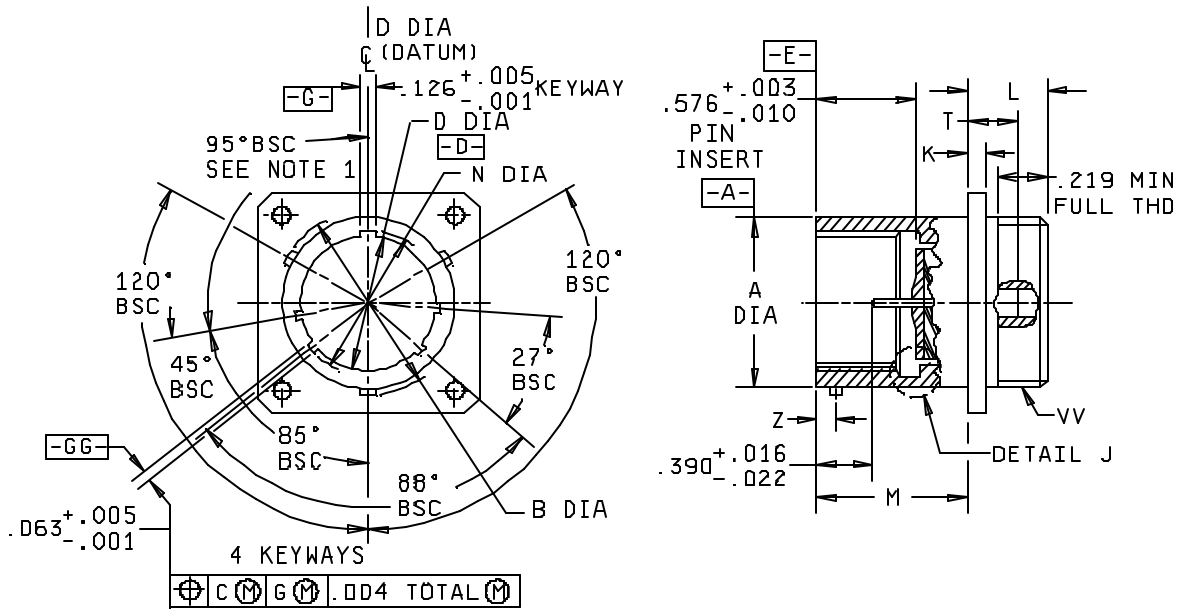


FIGURE 1. Receptacle, class E.

MS27515C

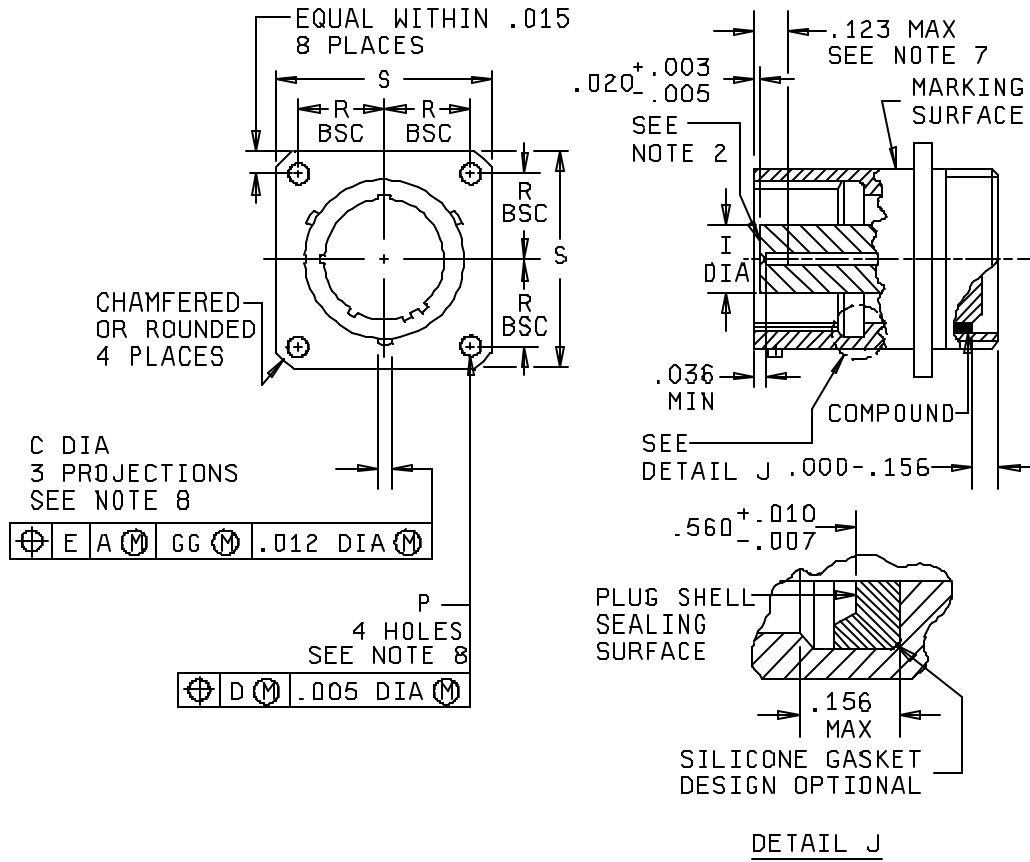


FIGURE 1. Receptacle, class E - Continued.

## MS27515C

Shell size	A dia +.001 -.005	B dia +.000 -.016 over projection	C dia +.006 -.002	D dia +.005 -.001	I max dia	K +.015 -.000	L max	M +.000 -.005	N dia +.005 -.006
9	.572	.662	.078	.442	.290	.085	.469	.820	.492
11	.700	.810		.570	.418				.620
13	.850	.960		.687	.532				.769
15	.975	1.085		.812	.657				.894
17	1.100	1.210		.937	.782				1.019
19	1.207	1.317		1.042	.871				1.124
21	1.332	1.442		1.167	.996				1.249
23	1.457	1.567		1.292	1.121				1.374
25	1.582	1.692	.125	1.417	1.246	.115	.500	.790	1.499

Shell size	P dia +.010 -.005	R BSC	S ±.020	T max	Z BSC	VV THD class 2A (plated)	For insert arrangement see MS drawing
9	.128	.3595	.938	.156	.100	.5625-24UNEF	20049, 27525
11		.406	1.031			.6875-24UNEF	20050, 27526
13		.453	1.125			.8125-20UNEF	20051, 27527
15		.4845	1.219			.9375-20UNEF	20052, 27528
17		.531	1.312			1.0625-18UNEF	20053, 27529
19		.578	1.438			1.1875-18UNEF	20054, 27530
21		.625	1.562			1.3125-18UNEF	20055, 27531
23	.147	.6875	1.688	.188	.109	1.4375-18UNEF	20056, 27532
25		.750	1.812			1.5625-18UNEF	20057, 27533

FIGURE 1. Receptacle, class E - Continued.

## MS27515C

Inches	mm	Inches	mm	Inches	mm	Inches	mm
.000	0.00	.147	3.73	.662	16.81	1.124	28.55
.001	0.03	.156	3.96	.687	17.45	1.125	28.58
.002	0.05	.188	4.78	.6875	17.46	1.167	29.64
.003	0.08	.219	5.56	.700	17.78	1.207	30.66
.004	0.10	.290	7.37	.750	19.05	1.210	30.73
.005	0.13	.3595	9.13	.769	19.53	1.219	30.96
.006	0.15	.390	9.91	.782	19.86	1.246	31.65
.007	0.18	.406	10.31	.790	20.07	1.249	31.72
.010	0.25	.418	10.62	.810	20.57	1.292	32.82
.012	0.30	.442	11.23	.812	20.62	1.312	33.32
.015	0.38	.453	11.51	.820	20.83	1.317	33.45
.016	0.41	.469	11.91	.850	21.59	1.332	33.83
.020	0.51	.4845	12.31	.871	22.12	1.374	34.90
.022	0.56	.492	12.50	.894	22.71	1.417	35.99
.036	0.91	.500	12.70	.937	23.80	1.438	36.53
.063	1.60	.531	13.49	.938	23.83	1.442	36.63
.078	1.98	.532	13.51	.960	24.38	1.457	37.01
.085	2.16	.560	14.22	.975	24.77	1.499	38.07
.100	2.54	.570	14.48	.996	25.30	1.562	39.67
.109	2.77	.572	14.53	1.019	25.88	1.567	39.80
.115	2.92	.576	14.63	1.031	26.19	1.582	40.18
.123	3.12	.578	14.68	1.042	26.47	1.688	42.88
.125	3.18	.620	15.75	1.085	27.56	1.692	42.98
.126	3.20	.625	15.88	1.100	27.94	1.812	46.02
.128	3.25	.657	16.69	1.121	28.47		

## NOTES:

1. Normal keyway position. For other keyway positions, see figure 4 of MIL-DTL-38999.
2. Insert front surface shall be flat within .005 Total Indicator Reading (TIR).
3. Diameters A and D shall be concentric within .015 TIR.
4. Diameters D and I shall be concentric within .015 TIR at Maximum Material Condition (MMC).
5. Diameter A with respect to diameter B, and diameter D with respect to diameter N, shall be concentric at MMC.
6. Dimensions are in inches.
7. The point at which a gauge pin, having the same basic diameter as the mating contact and a square face, touches socket contact spring.
8. The gauge features for GG shall be .010 (0.25 mm) smaller than the MMC size at basic location.
9. Metric equivalents are given for general information only.

FIGURE 1. Receptacle, class E - Continued.

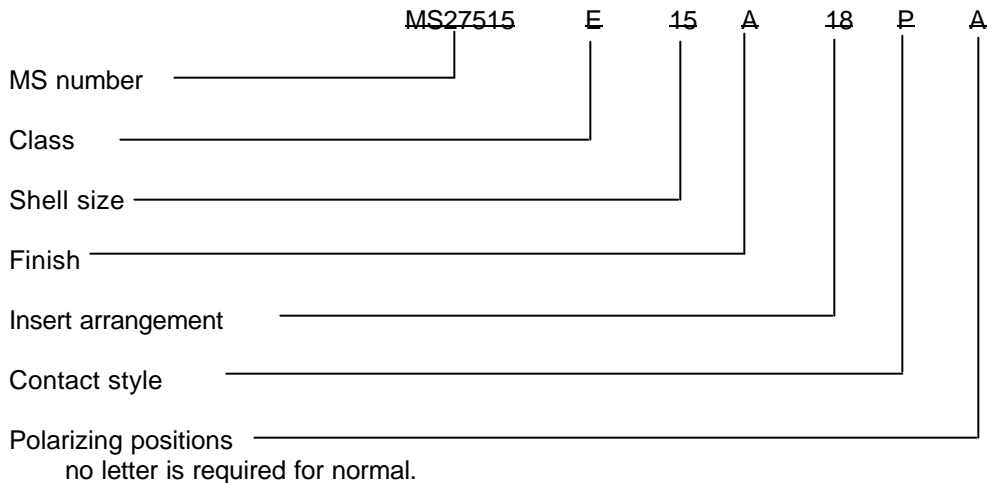
## REQUIREMENTS:

Dimensions and configuration: See figure 1.  
Interface dimensions shall conform to MIL-DTL-38999.  
Mating connectors: MS27467, MS27653 and MS27661.

MS27515C

Insert arrangements: See MIL-STD-1560.

Part or Identifying Number (PIN) example:



CONCLUDING MATERIAL

Custodians:

- Army - CR
- Navy - AS
- Air Force - 11
- DLA - CC

Preparing activity:  
DLA - CC

(Project 5935-4403)

Review activities:

- Army - AR, MI
- Navy - EC, MC, OS
- Air Force - 19, 99