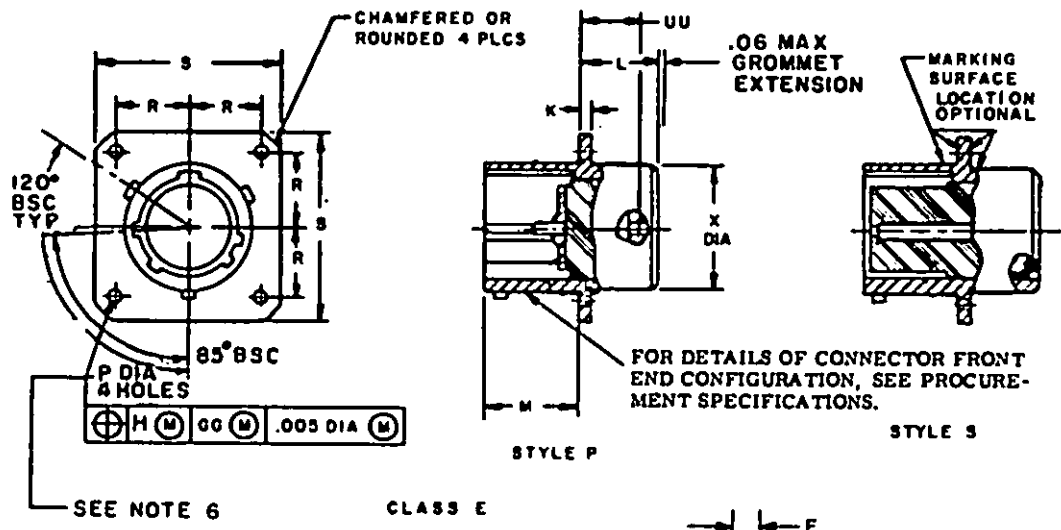


FED. SUP CLASS
5935

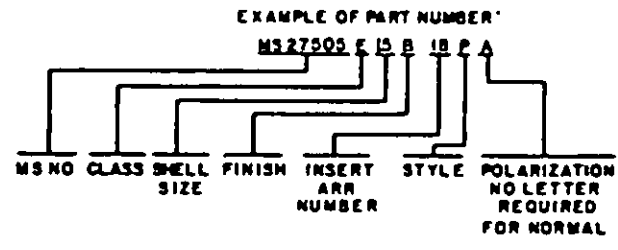
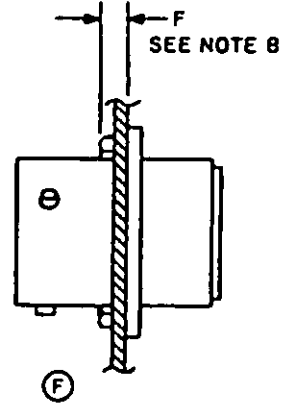
Reviewer activities: Army - MI, MU Navy - EC, MC, OS Air Force - 11, 15, 17, 99 DLA - ES
 User activities: Army - Navy - Air Force -
 This military standard is approved for use by all Departments and Agencies of the Department of Defense. Selection for all new engineering and design applications and for repetitive use shall be made from this document.



SEE NOTE 6

CLASS E

FOR DETAILS OF CONNECTOR FRONT END CONFIGURATION, SEE PROCUREMENT SPECIFICATIONS.



(F) DENOTES CHANGE

P.A. AF-85	International Interest	TITLE CONNECTOR, RECEPTACLE, ELECTRICAL, BACK PANEL, BOX MOUNTING FLANGE, CRIMP TYPE, BAYONET COUPLING, SERIES I	MILITARY STANDARD
Other Cust ARMY - CR NAVY - AS		SUPERSEDES: MS27505 (USAF)	MS27505
Procurement Specification MIL-C-38999			PAGE 1 OF 2

DD FORM 672
1 SEP 63

PREVIOUS EDITIONS OF THIS FORM ARE OBSOLETE.

5935-3234-2

APPROVED 8 MAR 1968 REVISED (C) 13 AUG 74 (D) 2 JAN 1976 (E) 11 JUL 1980 (F) 15 APR 82

FED. SUP CLASS
5935

Army - MI, MU
Navy - EC, MC, OS
Air Force - 11, 15, 17, 99
DLA - ES

Reviewer activities:
Army - MI, MU
Navy - EC, MC, OS
Air Force - 11, 15, 17, 99
DLA - ES

This military standard is approved for use by all Departments and Agencies of the Department of Defense. Selection for all new engineering and design applications and for repetitive use shall be made from this document.

User activities:
Army -
Navy -
Air Force -

(F)

SHELL SIZE	K +.015 -.000	L MAX	M +.000 -.005	P DIA +.010 -.005	R BSC	S +.020	UU MAX	X MAX DIA	F MAX
9					.3595	.938		.547	
11					.406	1.031		.656	
13	.085	.219	.820		.453	1.125	.156	.828	.234
15				.128	.4845	1.219		.953	
17					.531	1.312		1.078	
19					.578	1.438		1.203	
21	.115	.250	.790		.625	1.562		1.328	.204
23	.115	.250	.790	.147	.6875	1.688	.188	1.453	
25	.115	.250	.790	.147	.750	1.812		1.578	.193

INCHES	MM	INCHES	MM	INCHES	MM	INCHES	MM	INCHES	MM
.005	.13	.147	3.73	.406	10.31	.790	20.07	1.219	30.96
.007	.18	.156	3.96	.453	11.51	.820	20.83	1.312	33.32
.010	.25	.193	4.90	.4845	12.31	.828	21.03	1.328	33.73
.015	.38	.204	5.18	.531	13.49	.938	23.83	1.438	36.53
.020	.51	.207	5.26	.547	13.89	.953	24.21	1.453	36.91
.031	.79	.219	5.56	.560	14.22	1.031	26.19	1.562	39.67
.06	1.5	.234	5.94	.578	14.68	1.078	26.38	1.578	40.08
.085	2.16	.250	6.35	.625	15.88	1.125	27.58	1.688	42.88
.115	2.92	.328	8.33	.656	16.66	1.203	30.56	1.812	46.02
.128	3.25	.3595	9.13	.6875	17.46				
				.750	19.05				

NOTES:

- Dimensions are in inches.
- Metric equivalents are given for general information only and are based upon 1.00 inch = 25.4 mm.
- For main keyway and keyway positions, see MIL-C-38999.
- For design feature purposes, this standard takes precedence over documents referenced herein.
- Referenced documents shall be of the issue in effect on date of invitation for bid.
- The gage features for GG shall be .010 (.25 mm) smaller than the MMC size at basic location.
- Dimensioning and tolerances are in accordance with ANSI Y 14.5-1973.
- Maximum panel thickness including mounting hardware.

P.A. AF-85	International Interest	TITLE CONNECTOR, RECEPTACLE, ELECTRICAL, BACK PANEL, BOX MOUNTING FLANGE, CRIMP TYPE, BAYONET COUPLING, SERIES I	MILITARY STANDARD
Other Coast ARMY - CR NAVY - AS			MS27505
Procurement Specification MIL-C-38999		SUPERSEDES: MS 27505 (USAF)	PAGE 2 OF 2

DD FORM 672 (Coordinated) PREVIOUS EDITIONS OF THIS FORM ARE OBSOLETE.
1 SEP 63

APPROVED 8 MAR 1968 REVISED 13 AUG 74 (E) FOR CHANGES SEE SHEETS 1 & 2 (F) For changes see pages 1 & 2