

INCH-POUND

MS27504D
 12 July 2002
 SUPERSEDING
 MS27504C
 13 August 1974

DETAIL SPECIFICATION SHEET

CONNECTORS, RECEPTACLE, ELECTRICAL, BOX MOUNTING
 FLANGE, CRIMP TYPE, BAYONET COUPLING, SERIES II

This specification is approved for use by all Departments
 and Agencies of the Department of Defense.

The requirements for acquiring the product described herein
 shall consist of this specification and MIL-DTL-38999.

Inactive for new design.

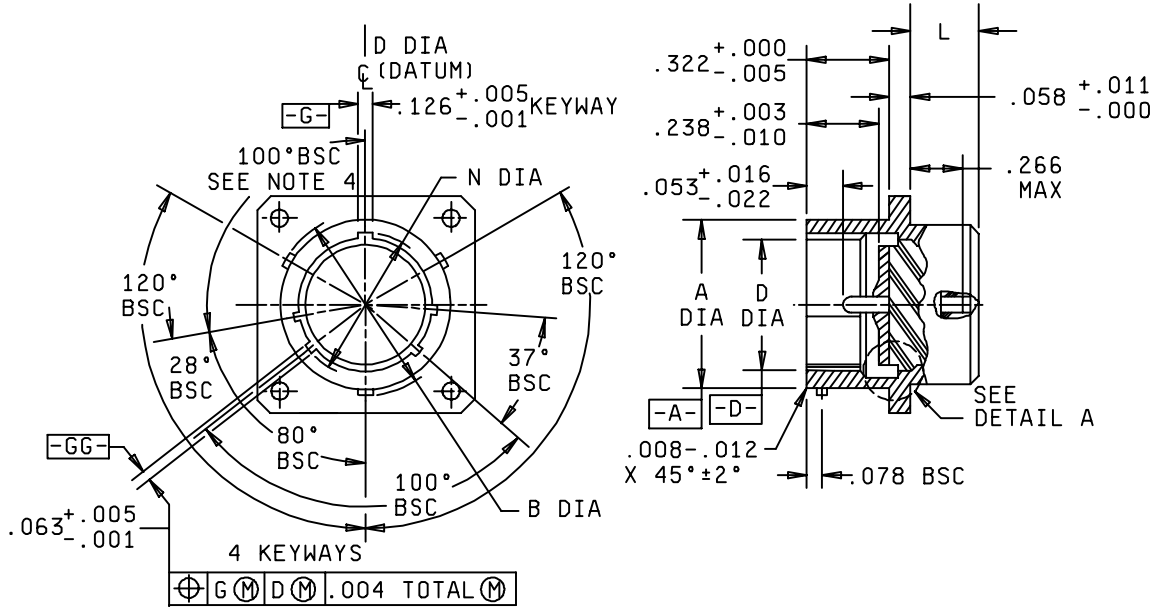
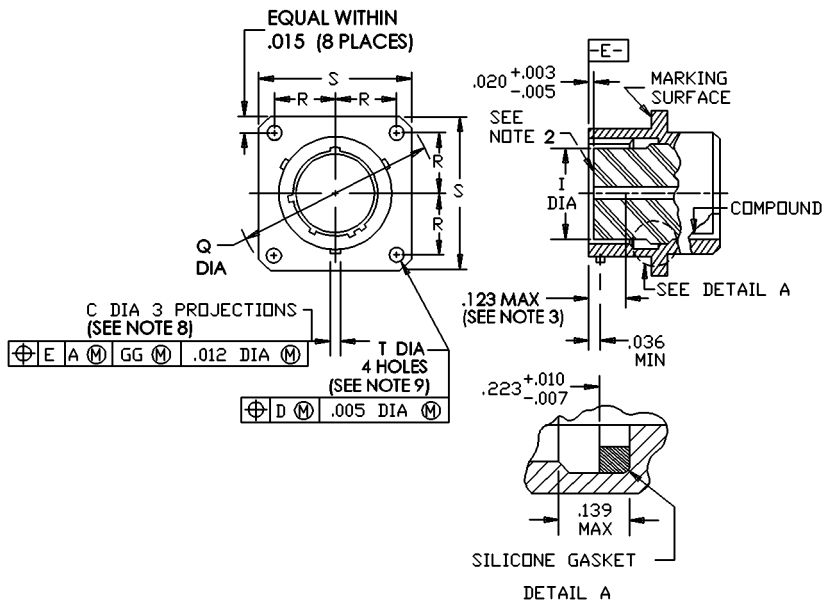


FIGURE 1. Receptacle, class E.

MS27504D



Shell size	A dia +.001 -.005	B dia +.000 -.016 over proj	C dia +.006 -.002	D dia +.005 -.001	I dia max	L max	M max	N dia +.005 -.006
8	.473	.563	.078	.362	.290	.312	.453	.412
10	.590	.680		.490	.418		.578	.540
12	.750	.859		.607	.532		.703	.689
14	.875	.984		.732	.657		.828	.814
16	1.000	1.103		.857	.782		.953	.939
18	1.125	1.233		.962	.871		1.062	1.039
20	1.250	1.358	.125	1.087	.996		1.188	1.164
22	1.375	1.483		1.212	1.121		1.312	1.289
24	1.500	1.610		1.337	1.246	1.438	1.414	

FIGURE 1. Receptacle, class E – Continued.

MS27504D

Shell size	Q dia max	R BSC	S max	T dia +.010 -.005	CC	For insert arrangement, see MS drawing
8	1.078	.297	.828	.120	.004	27343, 27516
10	1.266	.3595	.954		.010	27344, 27517
12	1.391	.406	1.047			27345, 27518
14	1.516	.453	1.141			27346, 27519
16	1.641	.4845	1.234			27347, 27520
18	1.766	.531	1.328			27348, 27521
20	1.891	.578	1.453			27349, 27522
22	2.016	.625	1.578			27350, 27523
24	2.204	.6875	1.703			.147

NOTES:

1. Dimensions are in inches.
2. Insert front surface shall be flat within .005 T.I.R.
3. The point at which a gage pin, having the same basic diameter as the mating contact and a square face, touches socket contact spring.
4. Normal keyway position. For other keyway positions see MIL-DTL-38999.
5. Diameters A and D shall be concentric within .015 T.I.R.
6. Diameter A with respect to diameter B, and diameter D with respect to diameter N, Shall be concentric at MMC.
7. Diameters D and I shall be concentric within .005 T.I.R at MMC.
8. The gauge features for GG shall be CC smaller than their MMC at basic location.
9. The gauge features for GG shall be .010 smaller than their MMC at basic location.

FIGURE 1. Receptacle, class E – Continued.

MS27504D

REQUIREMENTS:

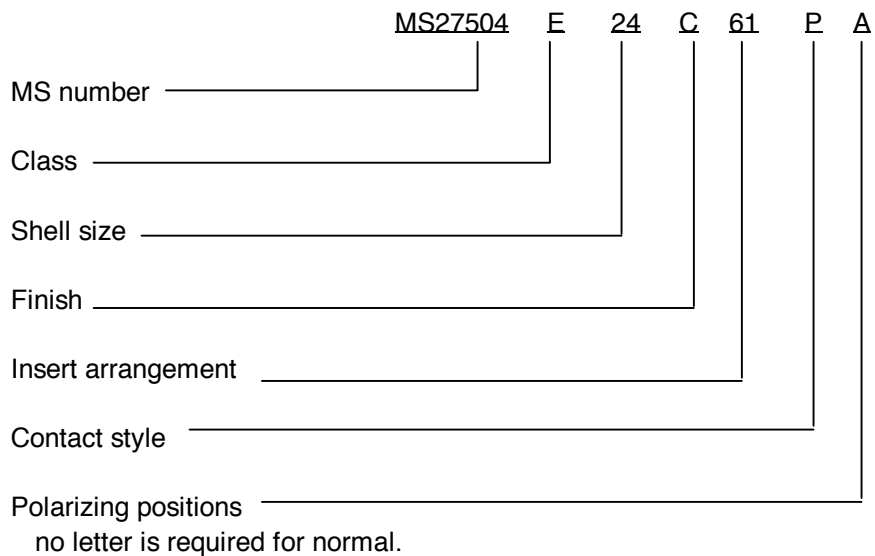
Dimensions and configuration: See figure 1. Interface dimensions shall conform to MIL-DTL-38999.

Mating connectors: MS27473, MS27480, MS27484 and MS27500.

Procurement specification: MIL-DTL-38999.

Insert arrangements: See MIL-STD-1560.

Part or Identifying Number (PIN) example:



CONCLUDING MATERIAL

Custodians:

Army – CR
 Navy – AS
 Air Force – 11
 DLA – CC

Preparing activity:

DLA – CC

(Project 5935–4380)

Review activities:

Army – AR, MI
 Navy – EC, MC, OS
 Air Force – 19, 99
 DLA – IS