

INCH-POUND

MS27500H  
2 February 2012  
SUPERSEDING  
MS27500G  
12 July 2002

# DETAIL SPECIFICATION SHEET

CONNECTORS, PLUG, ELECTRICAL, 90° ELBOW,  
CRIMP TYPE, BAYONET COUPLING, SERIES II

Reactivated after 24 May 2004 and may be used  
for new and existing designs and acquisitions.

This specification is approved for use by all Departments  
and Agencies of the Department of Defense.

The requirements for acquiring the product described herein  
shall consist of this specification sheet and MIL-DTL-38999.

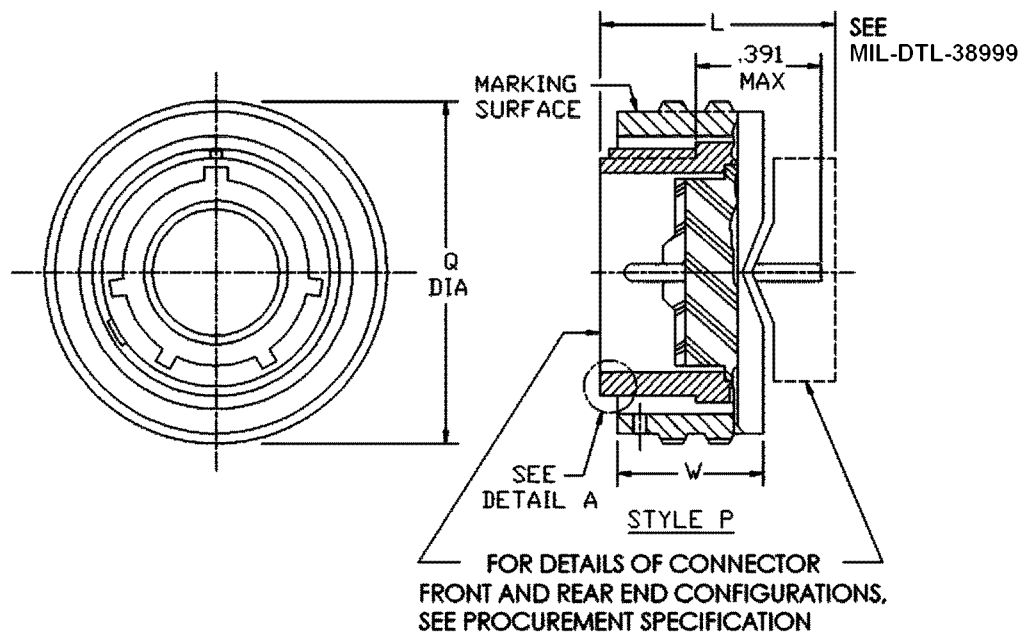


FIGURE 1. Plug, class E.

MS27500H

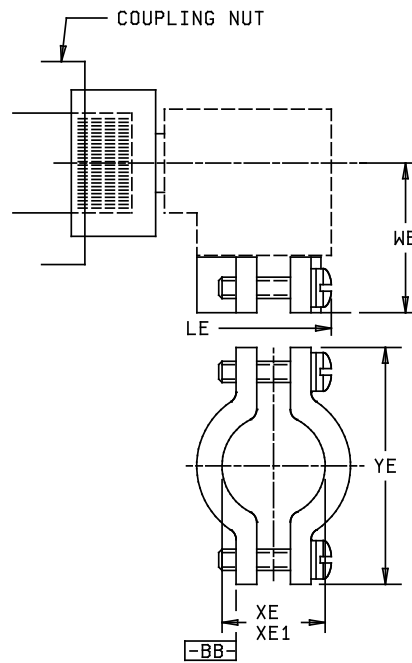
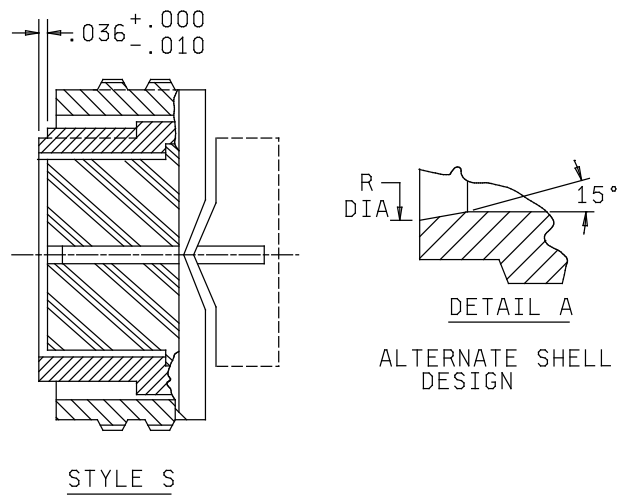


FIGURE 1. Plug, class E – Continued.

## MS27500H

Shell size	Q max dia	R dia +.005 -.006	W ±. 015	LE max overall length	WE max	XE min cable	XE1 max cable	YE max
8	.750	.316	.547	1.859	1.000	.082	.234	.828
10	.859	.436		1.859	1.032	.082	.234	.891
12	1.031	.549		1.938	1.094	.114	.328	1.016
14	1.156	.675		2.125	1.219	.176	.457	1.141
16	1.281	.799		2.281	1.281	.238	.634	1.255
18	1.406	.893		2.312	1.344	.208	.614	1.469
20	1.531	1.018	.524	2.375	1.375	.302	.698	1.550
22	1.641	1.143		2.531	1.438	.302	.823	1.675
24	1.766	1.268	.575	2.828	1.719	.332	.853	1.800

Inches	mm	Inches	mm	Inches	mm	Inches	mm	Inches	mm
.005	0.13	.316	8.03	.750	19.05	1.141	28.98	1.641	41.68
.006	0.15	.328	8.33	.799	20.29	1.143	29.03	1.675	42.55
.010	0.25	.332	8.43	.823	20.90	1.156	29.36	1.719	43.66
.015	0.38	.391	9.93	.828	21.03	1.219	30.96	1.766	44.86
.036	0.91	.436	11.07	.853	21.67	1.255	31.88	1.800	45.72
.082	2.08	.457	11.61	.859	21.82	1.268	32.21	1.859	47.22
.109	2.77	.524	13.31	.891	22.63	1.281	32.54	1.938	49.23
.114	2.90	.547	13.89	.893	22.68	1.344	34.14	2.125	53.98
.155	3.94	.549	13.94	1.000	25.40	1.375	34.93	2.281	57.94
.176	4.47	.575	14.61	1.016	25.81	1.406	35.71	2.312	58.72
.208	5.28	.614	15.60	1.018	25.86	1.438	36.53	2.375	60.33
.234	5.94	.634	16.10	1.031	26.19	1.469	37.31	2.531	64.29
.238	6.05	.675	17.15	1.032	26.21	1.531	38.89	2.828	71.83
.302	7.67	.698	17.73	1.094	27.79	1.550	39.37		

## NOTES:

1. Dimensions are in inches.
2. Metric equivalents are given for information only.
3. For main key and key positions, see MIL-DTL-38999.
4. Dimensions LE and XE are applicable when the end of the screw is flush with surface BB.

FIGURE 1. Plug, class E – Continued.

## MS27500H

## REQUIREMENTS:

Dimensions and configuration: See figure 1.

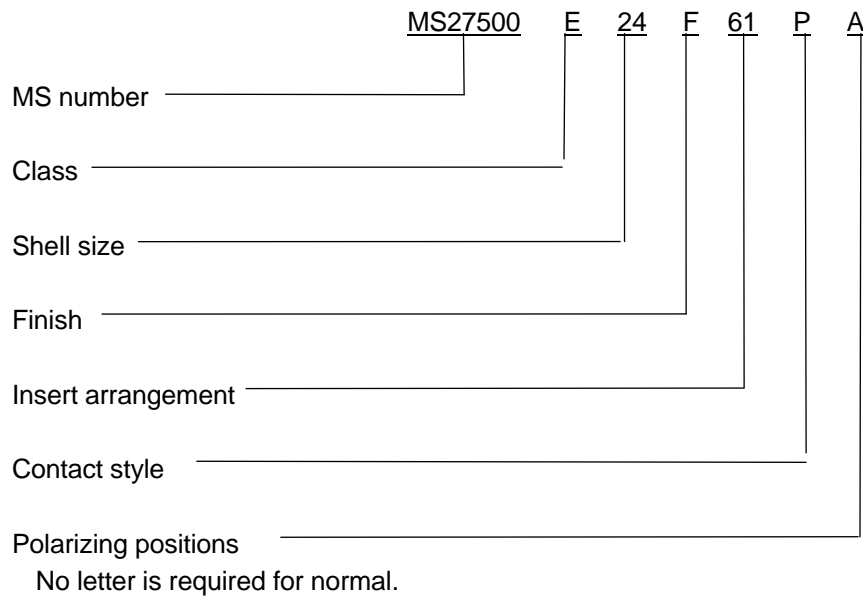
Interface dimensions shall be in accordance with MIL-DTL-38999.

Mating connectors: MIL-DTL-38999/10, MS27472, MS27474, MS27475, MS27476, MS27477, MS27478, MS27479, MS27480, MS27481, MS27497, MS27499, MS27504, MS27508 and MS27513.

Procurement Specification: MIL-DTL-38999.

Insert arrangements: See MIL-STD-1560.

Part or Identifying Number (PIN) example:



Changes from previous issue. Marginal notations are not used in this revision to identify changes with respect to the previous issue, due to the extent of the changes.

## MS27500H

Referenced documents. In addition to MIL-DTL-38999, this document references the following:

MIL-DTL-38999/10  
MIL-STD-1560  
MS27472  
MS27474  
MS27475  
MS27476  
MS27477  
MS27478  
MS27479  
MS27480  
MS27481  
MS27497  
MS27499  
MS27504  
MS27508  
MS27513

## CONCLUDING MATERIAL

### Custodians:

Army – CR  
Navy – AS  
Air Force – 85  
DLA – CC

### Preparing activity:

DLA – CC

(Project 5935–2012-054)

### Review activities:

Army – AR, MI  
Navy – EC, MC, OS  
Air Force – 19, 99  
DLA – IS

NOTE: The activities listed above were interested in this document as of the date of this document. Since organizations and responsibilities can change, you should verify the currency of the information above using the ASSIST Online database at <https://assist.daps.dla.mil>.