

INCH-POUND

MS27500G

12 July 2002

SUPERSEDING

MS27500F

2 January 1976

DETAIL SPECIFICATION SHEET

CONNECTORS, PLUG, ELECTRICAL, 90° ELBOW,
CRIMP TYPE, BAYONET COUPLING, SERIES II

This specification is approved for use by all Departments
and Agencies of the Department of Defense.

The requirements for acquiring the product described herein
shall consist of this specification and MIL-DTL-38999.

Inactive for new design

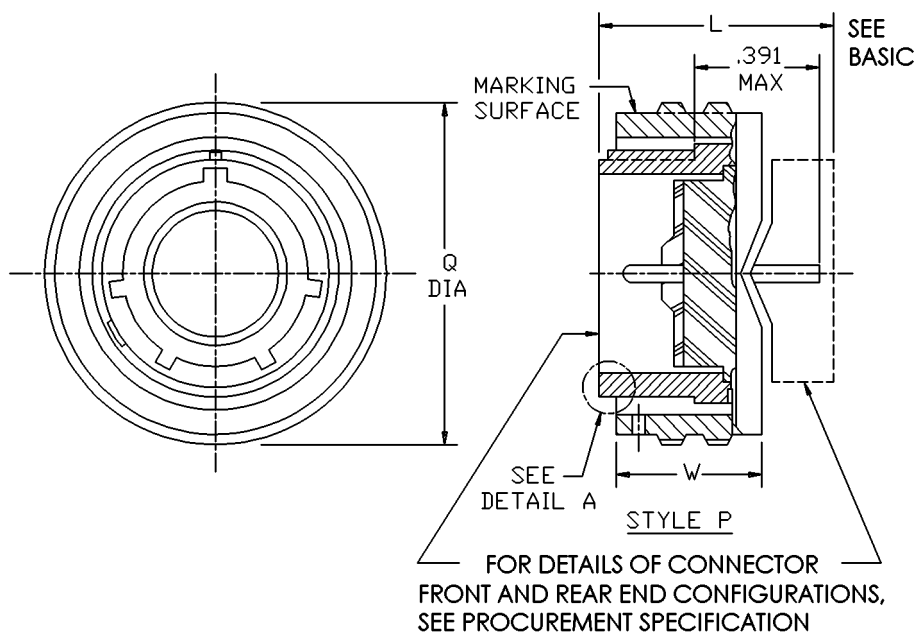
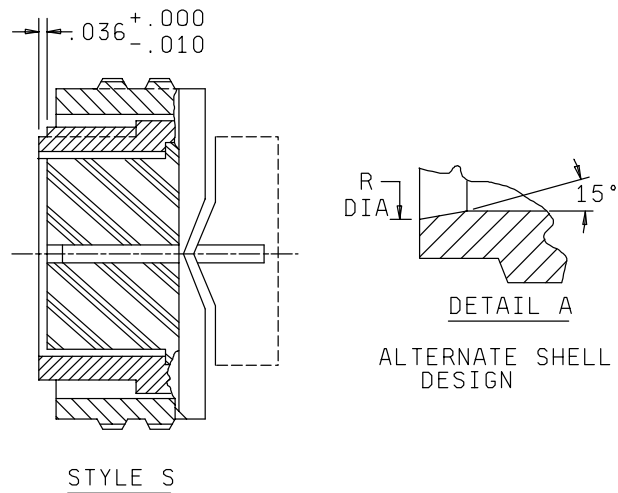


FIGURE 1. Plug, class E.

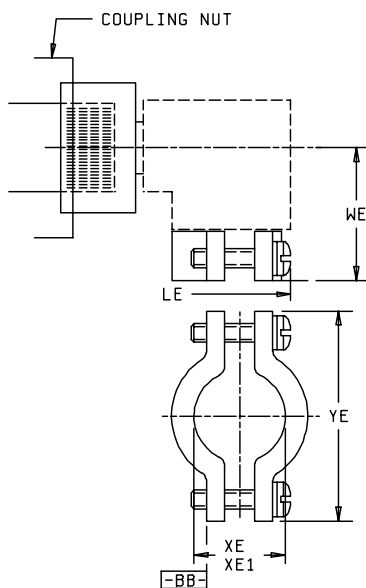
MS27500G



Shell size	Q max dia	R dia +.005 -.006	W ±. 015	LE max overall length	WE max	XE min cable	XE1 max cable	YE max
8	.750	.316	.547	1.859	1.000	.082	.234	.828
10	.859	.436		1.859	1.032	.082	.234	.891
12	1.031	.549		1.938	1.094	.114	.328	1.016
14	1.156	.675		2.125	1.219	.176	.457	1.141
16	1.281	.799		2.281	1.281	.238	.634	1.255
18	1.406	.893		2.312	1.344	.208	.614	1.469
20	1.531	1.018	.524	2.375	1.375	.302	.698	1.550
22	1.641	1.143		2.531	1.438	.302	.823	1.675
24	1.766	1.268	.575	2.828	1.719	.332	.853	1.800

FIGURE 1. Plug, class E – Continued.

MS27500G



Inches	mm	Inches	mm	Inches	mm	Inches	mm	Inches	mm
.005	.13	.316	8.03	.750	19.05	1.141	28.98	1.641	41.68
.006	.15	.328	8.33	.799	20.29	1.143	29.03	1.675	42.55
.010	.25	.332	8.43	.823	20.90	1.156	29.36	1.719	43.66
.015	.38	.391	9.93	.828	21.03	1.219	30.96	1.766	44.86
.036	.91	.436	11.07	.853	21.67	1.255	31.88	1.800	45.72
.082	2.08	.457	11.61	.859	21.82	1.268	32.21	1.859	47.22
.109	2.77	.524	13.31	.891	22.63	1.281	32.54	1.938	49.23
.114	2.90	.547	13.89	.893	22.68	1.344	34.14	2.125	53.98
.155	3.94	.549	13.94	1.000	25.40	1.375	34.93	2.281	57.94
.176	4.47	.575	14.61	1.016	25.81	1.406	35.71	2.312	58.72
.208	5.28	.614	15.60	1.018	25.86	1.438	36.53	2.375	60.33
.234	5.94	.634	16.10	1.031	26.19	1.469	37.31	2.531	64.29
.238	6.05	.675	17.15	1.032	26.21	1.531	38.89	2.828	71.83
.302	7.67	.698	17.73	1.094	27.79	1.550	39.37		

NOTES:

1. Dimensions are in inches.
2. Metric equivalents are given for general information only.
3. For main key and key positions, see MIL-DTL-38999.
4. Dimensions LE and XE are applicable when the end of the screw is flush with surface BB.

FIGURE 1. Plug, class E – Continued.

MS27500G

REQUIREMENTS:

Dimensions and configuration: See figure 1.

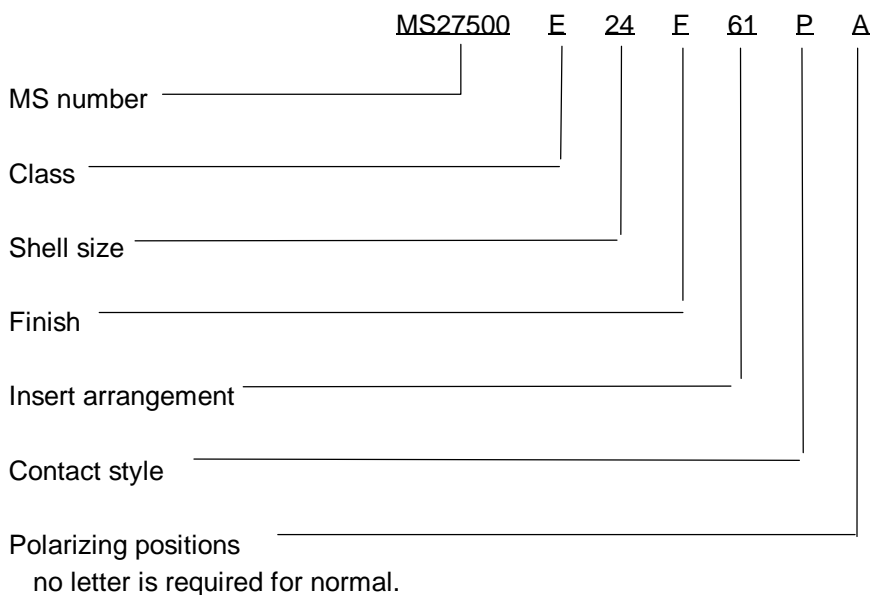
Interface dimensions shall conform to MIL-DTL-38999.

Mating connectors: MIL-DTL-38999/10, MS27472, MS27474, MS27475, MS27476, MS27477, MS27478, MS27479, MS27480, MS27481, MS27497, MS27499, MS27504, MS27508 and MS27513.

Procurement Specification: MIL-DTL-38999.

Insert arrangements: See MIL-STD-1560.

Part or Identifying Number (PIN) example:



CONCLUDING MATERIAL

Custodians:

- Army – CR
- Navy – AS
- Air Force – 11
- DLA – CC

Preparing activity:

DLA – CC

(Project 5935–4379)

Review activities:

- Army – AR, MI
- Navy – EC, MC, OS
- Air Force – 19, 99
- DLA – IS