

User activities:
 Army -
 Navy -
 Air Force -

Reviewer activities:
 Army -
 Navy - EC
 Air Force - 11, 15, 17, 80
 DSA - ES

This military standard is approved for use by all Departments and Agencies of the Department of Defense. Selection for all new engineering and design applications and for repetitive use shall be made from this document.

FED. SUP CLASS
 5935

DETAIL A
ALTERNATE SHELL DESIGN

STYLE P

STYLE S

CLASS E

SHELL SIZE	K MAX REF	Q MAX DIA	R + .005 - .008 DIA	W ± .015	
8	.115	.750	.316	.547	
10		.859	.436		
12		1.031	.549		
14		1.156	.675		
16		1.281	.799		
18		1.406	.893		
20	.109	1.531	1.018	.524	
22		1.641	1.143		
24		1.766	1.268		.575

EXAMPLE OF PART NUMBER

MS27500 E 24 F 61 P A

MS NO.	CLASS	SHELL SIZE	FINISH (COLOR)	INSERT ARR. NUMBER	STYLE (P OR S)	POLARIZATION NO LETTER REQUIRED FOR NORMAL
--------	-------	------------	----------------	--------------------	----------------	--

INACTIVE FOR DESIGN

(F) FOR CHANGES SEE SHEETS 1&2

P.A. AF-85

Other Cust
ARMY EL
NAVY AS

Procurement Specification
MIL-C-38999

TITLE
 CONNECTOR, PLUG, ELECTRICAL, 90°
 ELBOW, CRIMP TYPE, BAYONET
 COUPLING, SERIES II.

SUPERSEDES:

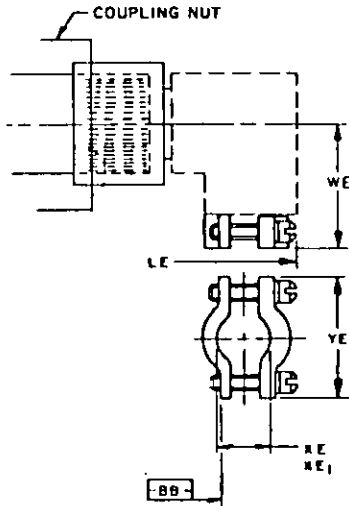
MILITARY STANDARD

MS.27500

SHEET 1 OF 2

APPROVED 1 AUG 67 REVISED (D) 13 AUG 74 (E) 16 JAN 1975 (F) 2 JAN 1976

CLASS E



SHELL SIZE	LE MAX OVER-ALL LENGTH	WE MAX	XE MIN CABLE	XE1 MAX CABLE	YE MAX
8	1.859	1.000	.082	.234	.828
10	1.859	1.032	.082	.234	.891
12	1.938	1.094	.114	.328	1.016
14	2.125	1.219	.176	.457	1.141
16	2.281	1.281	.238	.634	1.255
18	2.312	1.344	.208	.614	1.469
20	2.375	1.375	.302	.698	1.550
22	2.531	1.438	.302	.823	1.675
24	2.828	1.719	.332	.853	1.800

INCHES	MM	INCHES	MM	INCHES	MM	INCHES	MM	INCHES	MM
.005	.13	.316	8.03	.750	19.05	1.141	28.98	1.641	41.68
.006	.15	.328	8.33	.799	20.29	1.143	29.03	1.675	42.55
.010	.25	.332	8.43	.823	20.90	1.156	29.36	1.719	43.66
.015	.38	.391	9.93	.828	21.03	1.219	30.96	1.766	44.86
.036	.91	.436	11.07	.853	21.67	1.255	31.88	1.800	45.72
.082	2.08	.457	11.61	.859	21.82	1.268	32.21	1.859	47.22
.109	2.77	.524	13.31	.891	22.63	1.281	32.54	1.938	49.23
.114	2.90	.547	13.89	.893	22.68	1.344	34.14	2.125	53.98
.155	3.94	.549	13.94	1.000	25.40	1.375	34.93	2.281	57.94
.176	4.47	.575	14.61	1.016	25.81	1.406	35.71	2.312	58.72
.208	5.28	.614	15.60	1.018	25.86	1.438	36.53	2.375	60.33
.234	5.94	.634	16.10	1.031	26.19	1.469	37.31	2.531	64.29
.238	6.05	.675	17.15	1.032	26.21	1.531	38.89	2.828	71.83
.302	7.67	.698	17.73	1.094	27.79	1.550	39.37		

NOTES:

1. Dimensions are in inches.
2. Metric equivalents (to the nearest .01 mm) are given for general information only and are based upon 1 inch = 25.4 mm.
3. For main keyway and keyway positions, see MIL-C-38999.
4. Dimensions LE and XE are applicable when the end of the screw is flush with surface BB.
5. For design feature purposes this standard takes precedence over documents referenced herein.
6. Referenced documents shall be of the issue in effect on date of invitation for bid.

Reviewer activities:
Army -
Navy - EC
Air Force - 11, 15, 17, 80
DSA - ES

User activities:
Army -
Navy -
Air Force -

This military standard is approved for use by all Departments and Agencies of the Department of Defense. Selection for all new engineering and design applications and for repetitive use shall be made from this document.

APPROVED 1 Aug 67 (E) FOR CHANGES SEE SHEETS 1 and 2

P.A. AF-85	International Interest	TITLE CONNECTOR, PLUG, ELECTRICAL, 90° ELBOW, CRIMP TYPE, BAYONET COUPLING. SERIES II.	MILITARY STANDARD
Other Cust ARMY-EL NAVY-AS			MS27500
Procurement Specification MIL-C-38999		SUPERSEDES:	SHEET 2 OF 2