

INCH-POUND

MS27499J

24 November 2008

SUPERSEDING

MS27499H

12 July 2002

## DETAIL SPECIFICATION SHEET

CONNECTORS, RECEPTACLE, ELECTRICAL, BOX MOUNTING  
FLANGE, CRIMP TYPE, BAYONET COUPLING, SERIES II

Reactivated after 24 May 2004 and may be used  
for new and existing designs and acquisitions.

This specification is approved for use by all Departments  
and Agencies of the Department of Defense.

The requirements for acquiring the product described herein  
shall consist of this specification sheet and MIL-DTL-38999.

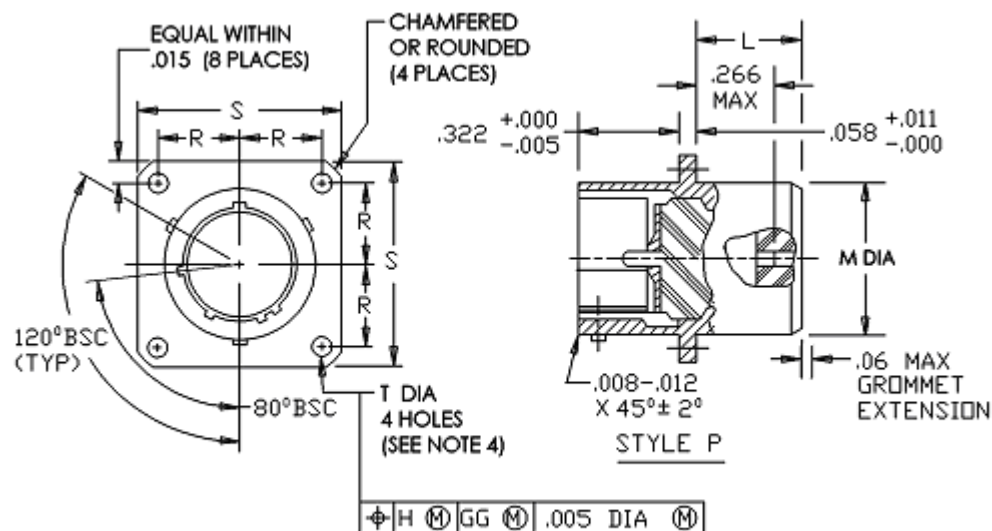
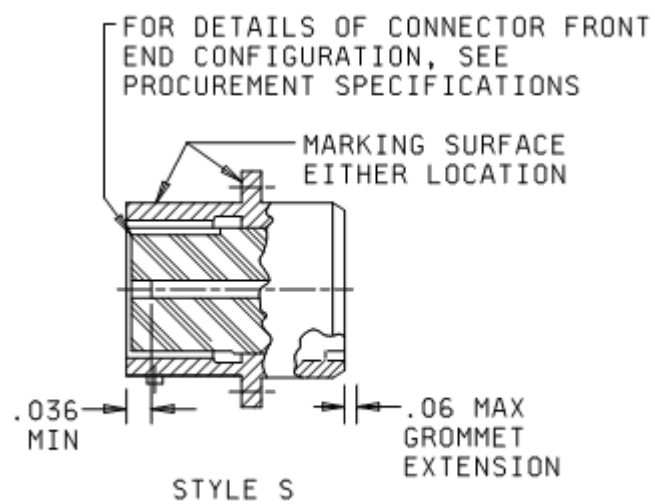


FIGURE 1. Receptacle, class E.

MS27499J



| Shell<br>size | L<br>max | M<br>max | R<br>BSC | S<br>max | T<br>+.010<br>-.005 |
|---------------|----------|----------|----------|----------|---------------------|
| 8             | .312     | .453     | .297     | .828     | .120                |
| 10            |          | .578     | .3595    | .954     |                     |
| 12            |          | .703     | .406     | 1.047    |                     |
| 14            |          | .828     | .453     | 1.141    |                     |
| 16            |          | .953     | .4845    | 1.234    |                     |
| 18            |          | 1.062    | .531     | 1.328    |                     |
| 20            |          | 1.188    | .578     | 1.453    |                     |
| 22            |          | 1.312    | .625     | 1.578    |                     |
| 24            |          | 1.438    | .6875    | 1.703    | .147                |

FIGURE 1. Receptacle, class E – Continued.

## MS27499J

| Inches | mm   | Inches | mm    | Inches | mm    | Inches | mm    |
|--------|------|--------|-------|--------|-------|--------|-------|
| .005   | 0.13 | .147   | 3.73  | .6875  | 17.45 | 1.328  | 33.73 |
| .007   | 0.18 | .223   | 5.66  | .703   | 17.85 | 1.391  | 35.33 |
| .008   | 0.20 | .266   | 6.76  | .828   | 21.03 | 1.438  | 36.53 |
| .010   | 0.25 | .297   | 7.54  | .953   | 24.21 | 1.453  | 36.91 |
| .011   | 0.28 | .312   | 7.92  | .954   | 24.23 | 1.516  | 38.51 |
| .012   | 0.30 | .322   | 8.18  | 1.047  | 26.59 | 1.578  | 40.08 |
| .015   | 0.38 | .3595  | 9.13  | 1.062  | 26.97 | 1.641  | 41.68 |
| .036   | 0.91 | .406   | 10.31 | 1.078  | 27.38 | 1.703  | 43.26 |
| .058   | 1.47 | .453   | 11.51 | 1.141  | 28.98 | 1.766  | 44.86 |
| .06    | 1.5  | .4845  | 12.31 | 1.188  | 30.18 | 1.891  | 48.03 |
| .120   | 3.05 | .531   | 13.49 | 1.234  | 31.34 | 2.016  | 51.21 |
| .123   | 3.12 | .578   | 14.68 | 1.266  | 32.16 | 2.204  | 55.98 |
| .139   | 3.53 | .625   | 15.88 | 1.312  | 33.32 |        |       |

## NOTES:

1. Dimensions are in inches.
2. Metric equivalents are given for general information only.
3. For main key and key positions, see MIL-DTL-38999.
4. The gauge feature for GG shall be .010 inch (0.25 mm) smaller than the MMC size at base location.
5. Dimensioning and tolerances are in accordance with ASME-Y14.5M.

FIGURE 1. Receptacle, class E – Continued.

## MS27499J

## REQUIREMENTS:

Dimensions and configurations: See figure 1.

Interface dimensions shall conform to MIL-DTL-38999.

This receptacle mates with MS27473, MS27480, MS27484 and MS27500.

Procurement Specification: MIL-DTL-38999.

Insert arrangements: See MIL-STD-1560.

Part or Identifying Number (PIN) example:

|                                   | <u>MS27499</u> | <u>E</u> | <u>24</u> | <u>B</u> | <u>61</u> | <u>P</u> | <u>A</u> |
|-----------------------------------|----------------|----------|-----------|----------|-----------|----------|----------|
| MS number                         |                |          |           |          |           |          |          |
| Class                             |                |          |           |          |           |          |          |
| Shell size                        |                |          |           |          |           |          |          |
| Finish                            |                |          |           |          |           |          |          |
| Insert arrangement                |                |          |           |          |           |          |          |
| Contact style                     |                |          |           |          |           |          |          |
| Polarizing positions              |                |          |           |          |           |          |          |
| no letter is required for normal. |                |          |           |          |           |          |          |

Changes from previous issue. Marginal notations are not used in this revision to identify changes with respect to the previous issue due to the extent of the changes.

Referenced documents. In addition to MIL-DTL-38999, this document references the following:

MS27473  
 MS27480  
 MS27484  
 MS27500  
 MIL-STD-1560  
 ASME-Y14.5M

MS27499J

## CONCLUDING MATERIAL

### Custodians:

Army – CR  
Navy – AS  
Air Force – 85  
DLA – CC

### Preparing activity:

DLA – CC

(Project 5935–2008-049)

### Review activities:

Army – AR, MI  
Navy – EC, MC, OS  
Air Force – 19, 99

NOTE: The activities listed above were interested in this document as of the date of this document. Since organizations and responsibilities can change, you should verify the currency of the information above using the ASSIST Online database at <http://assist.daps.dla.mil>.