

INCH-POUND

MS27497N  
 12 July 2002  
 SUPERSEDING  
 MS27497M  
 15 June 1984

DETAIL SPECIFICATION SHEET

CONNECTORS, RECEPTACLE, ELECTRICAL, BACK PANEL, WALL MOUNTING FLANGE, CRIMP TYPE, BAYONET COUPLING, SERIES II

This specification is approved for use by all Departments and Agencies of the Department of Defense.

The requirements for acquiring the product described herein shall consist of this specification and MIL-DTL-38999.

Inactive for new design

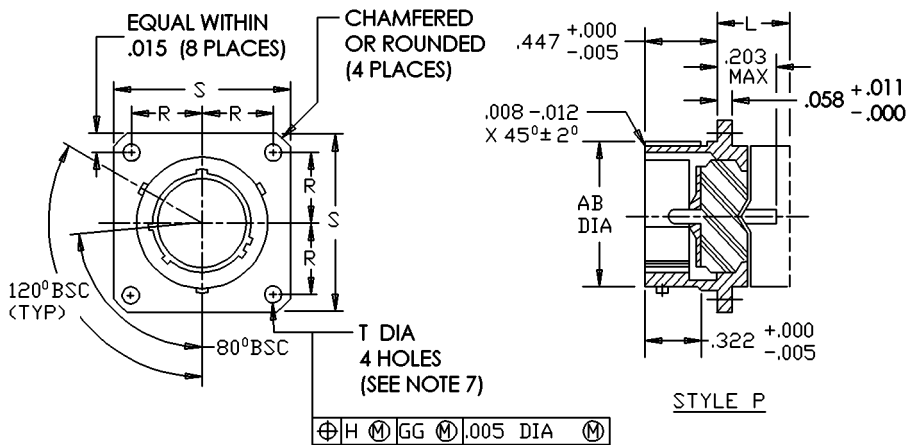


FIGURE 1. Receptacle, classes E, T, P and V.

MS27497N

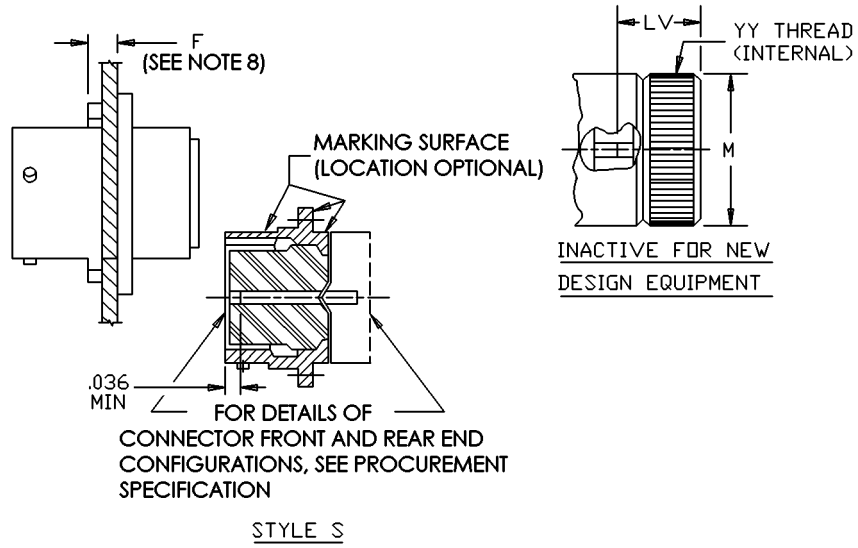


FIGURE 1. Receptacle, classes E, T, P and V – Continued.

## MS27497N

Shell size	R BSC	S max	T +.010 -.005	AB max dia	F max
8	.297	.828	.120	.547	.146
10	.3595	.954		.672	
12	.406	1.047		.844	
14	.453	1.141		.969	
16	.4845	1.234		1.094	
18	.531	1.328		1.219	
20	.578	1.453		1.344	
22	.625	1.578	1.469	.168	
24	.6875	1.703	.147		1.594

Shell size	LE max length	LP max length	LT max length	LV max length	YY Thread (PLATED) UNEF-2B Size
8	.562	.641	.391	.562	.500-28
10					.625-24
12					.750-20
14					.875-20
16					1.000-20
18					1.125-18
20					1.250-18
22					1.375-18
24					.703

FIGURE 1. Receptacle, classes E, T, P and V – Continued.

## MS27497N

Inches	mm	Inches	mm	Inches	mm	Inches	mm
.003	.08	.406	10.31	.828	21.03	1.359	34.52
.005	.13	.447	11.35	.844	21.44	1.375	34.92
.008	.20	.453	11.51	.859	21.82	1.391	35.33
.011	.28	.469	11.91	.875	22.22	1.453	36.91
.012	.30	.4845	12.306	.954	24.23	1.469	37.31
.015	.38	.500	12.70	.969	24.61	1.484	37.69
.020	.51	.531	13.49	.984	24.99	1.500	38.10
.036	.91	.547	13.89	1.047	26.59	1.516	38.51
.058	1.47	.562	14.27	1.078	27.38	1.578	40.08
.120	3.05	.578	14.68	1.094	27.79	1.594	40.49
.146	3.71	.609	15.47	1.125	28.58	1.609	40.87
.147	3.73	.625	15.88	1.141	28.98	1.641	41.68
.168	4.23	.641	16.28	1.219	30.96	1.703	43.26
.203	5.16	.672	17.07	1.234	31.34	1.766	44.86
.297	7.54	.6875	17.462	1.250	31.75	1.891	48.03
.322	8.18	.703	17.86	1.266	32.16	2.016	51.21
.3595	9.131	.734	18.64	1.328	33.73	2.204	55.98
.391	9.93	.750	19.05	1.344	34.14		

## NOTES:

1. Dimensions are in inches
2. Metric equivalents are given for general information only.
3. Class V assemblies meet the performance requirements of class E assemblies.
4. Class V rear accessory thread of shell is internal.
5. For main key and key positions, see MIL-DTL-38999.
6. Class E rear accessory thread of shell is external.
7. The gauge feature for GG shall be .010 inch (0.25 mm) smaller than the MMC size at basic location.
8. Maximum panel thickness including mounting hardware.

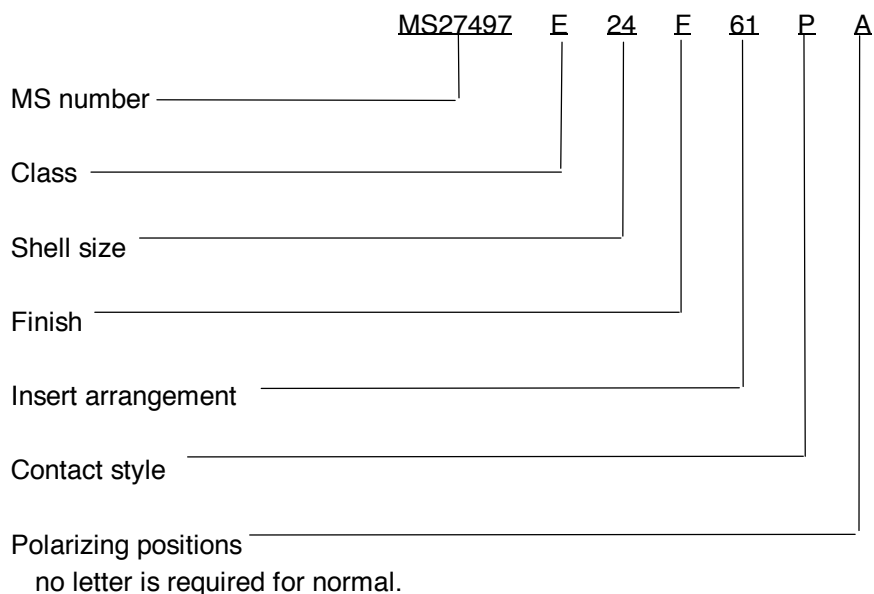
FIGURE 1. Receptacle, classes E, T, P and V – Continued.

MS27497N

REQUIREMENTS:

Dimensions and configuration: See figure 1.  
 Interface dimensions shall conform to MIL-DTL-38999.  
 This receptacle mates with MS27473, MS27480, MS27484 and MS27500.  
 Procurement specification: MIL-DTL-38999.  
 Insert arrangements: See MIL-STD-1560.

Part or Identifying Number (PIN) example:



CONCLUDING MATERIAL

Custodians:

- Army – CR
- Navy – AS
- Air Force – 11
- DLA – CC

Preparing activity:

- DLA – CC
- (Project 5935–4377)

Review activities:

- Army – AR, MI
- Navy – EC, MC, OS
- Air Force – 19, 99
- DLA – IS