

INCH-POUND

MS27489E
 12 July 2002
 SUPERSEDING
 MS27489D
 2 January 1976

DETAIL SPECIFICATION SHEET

Connectors, Adapter, Electrical, Reducer,
 EMR Hardware, Series I and II

This specification is approved for use by all Departments
 and Agencies of the Department of Defense.

The requirements for acquiring the product described herein
 shall consist of this specification and MIL-DTL-38999.

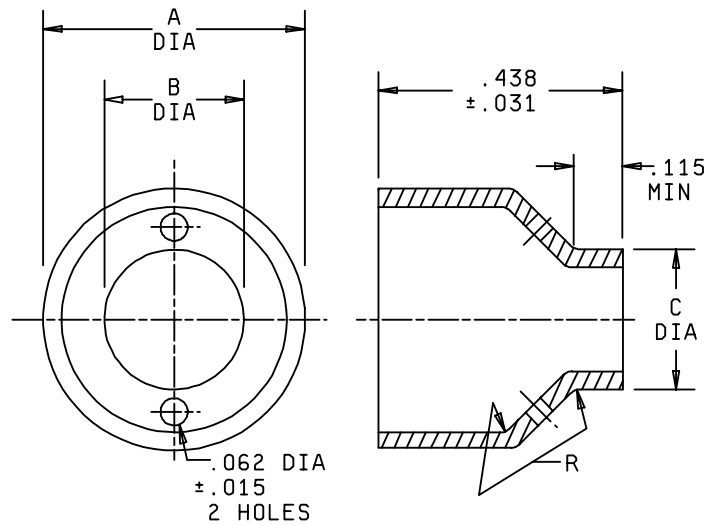


FIGURE 1. Adapter.

MS27489E

Dash No	A dia +.001, -.005	B dia +.010, -.001	C max dia	Dash No	A dia +.001, -.005	B dia +.010, -.001	C max dia
-81	.291	.164	.219	-141	.506	.217	.266
-82		.172	.234	-142		.290	.344
-83		.188	.250	-143		.312	.359
-84				-144		.343	.391
-85				-145		.360	.406
-86				-146		.387	.438
-87				-147			
-88				-148			
-89				-149			
-101	.346	.217	.266	-161	.571	.217	.266
-102				-162		.290	.344
-103				-163		.343	.391
-104				-164		.406	.453
-105				-165		.328	.375
-106				-166			
-107				-167			
-108				-168			
-109				-169			
-121	.441	.198	.250				
-122		.217	.266				
-123		.280	.328				
-124							
-125							
-126							
-127							
-128							
-129							

FIGURE 1. Adapter - Continued.

MS27489E

Dash No	A dia +.001 -.005	B dia +.010 -.001	C max dia	Dash No	A dia +.001 -.005	B dia +.010 -.001	C max dia
-181	.616	.217	.266	-221	.738	.359	.406
-182		.290	.344	-222		.438	.484
-183		.343	.391	-223		.453	.500
-184		.381	.430	-224		.469	.516
-185		.451	.500	-225		.562	.609
-186				-226			
-187				-227			
-188				-228			
-189				-229			
-201	.664	.328	.375	-241	.796	.594	.641
-202		.391	.453	-242			
-203		.445	.500	-243			
-204		.406	.469	-244			
-205		.484	.531	-245			
-206		.500	.547	-246			
-207				-247			
-208				-248			
-209				-249			

FIGURE 1. Adapter - Continued.

MS27489E

Inches	mm	Inches	mm	Inches	mm	Inches	mm
.001	0.03	.250	6.35	.381	9.68	.506	12.85
.005	0.13	.266	6.76	.387	9.83	.516	13.11
.010	0.25	.280	7.11	.391	9.93	.531	13.49
.015	0.38	.290	7.37	.406	10.31	.547	13.89
.031	0.79	.291	7.39	.430	10.92	.562	14.27
.062	1.57	.312	7.92	.438	11.13	.571	14.50
.164	4.17	.328	8.33	.441	11.20	.594	15.09
.172	4.37	.343	8.71	.445	11.30	.609	15.47
.188	4.78	.344	8.74	.451	11.46	.616	15.65
.198	5.03	.346	8.79	.453	11.51	.641	16.28
.217	5.51	.359	9.12	.469	11.91	.664	16.87
.219	5.56	.360	9.14	.484	12.29	.738	18.75
.234	5.94	.375	9.53	.500	12.70	.796	20.22

NOTES:

1. Dimensions are in inches.
2. Metric equivalents are given for general information only.
3. Material: Copper alloy. Finish: Tin-lead, solder plated.
4. Accommodates: MS27487.

FIGURE 1. Adapter - Continued.

MS27489E

REQUIREMENTS:

Dimensions and configuration: See figure 1.

Interface dimensions shall conform to MIL-DTL-38999.

Mating connectors: MIL-DTL-38999 series I and series II.

Qualification:

Examination of product.

Mating and unmating forces.

Humidity.

Salt spray (corrosion).

Altitude immersion.

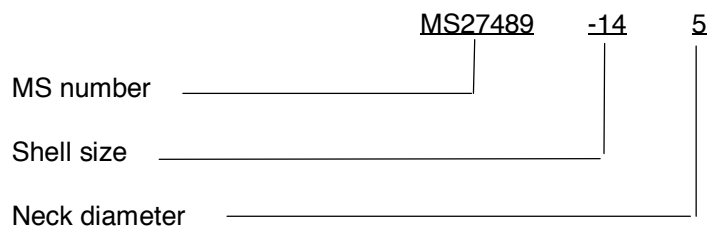
Group A sampling inspection. 100% inspection is not applicable. Sampling inspection shall be in accordance with table I:

TABLE I. Group A sampling plan.

Lot size	Sample size
1 to 13	100 percent
14 to 150	13 units
151 to 280	20 units
281 to 500	29 units
501 to 1,200	34 units
1,201 to 3,200	42 units

MS27489E

Part or Identifying Number (PIN) example:



CONCLUDING MATERIAL

Custodians:

- Army - CR
- Navy - AS
- Air Force - 11
- DLA - CC

Preparing activity:

DLA - CC

(Project 5935-4398)

Review activities:

- Army - AR, MI
- Navy - EC, MC, OS
- Air Force - 19, 99