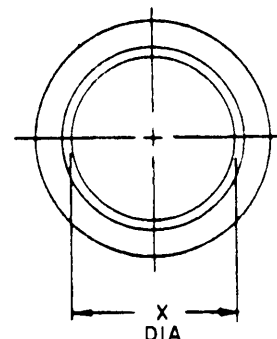
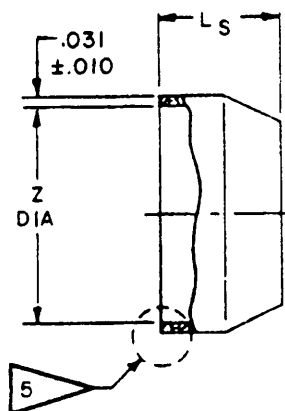
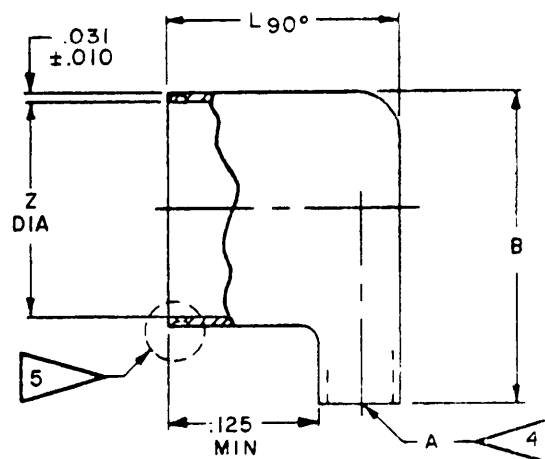


FED. SUP CLASS  
5935

STRAIGHT BOOT

-1



90° ELBOW

-2

## EXAMPLE OF PART NUMBER

MS 27486 -12 - 1  
 MS NO SHELL SIZE BOOT GEOMETRY  
 -1 STRAIGHT  
 -2 90° ELBOW

Army - MI, MU  
 Navy - EC, MC, OS  
 Air Force - 11, 15, 17, 80  
 DSA - ES

Reviewer activities:

This military standard is approved for use by all Departments and Agencies of the Department of Defense. Selection for all new engineering and design applications and for repetitive use shall be made from this document.

APPROVED 8 SEP 66 REVISED 13 AUG 74 2 JAN 1976

(D) For changes see sheets 1 and 2

P.A. AF-85	International interest	TITLE BOOT, POTTING, ELECTRICAL CONNECTOR, SERIES II	MILITARY STANDARD
Other Cust ARMY-EL NAVY-AS			MS27486
Procurement Specification MIL-C-38999	SUPERSEDES:	MS27486 (USAF)	SHEET 1 OF 2

DD FORM 672  
1 SEP 63

(Coordinated) PREVIOUS EDITIONS OF THIS FORM ARE OBSOLETE

5935-2005-27

FED. SUP CLASS  
5935

SHELL SIZE	A MIN CROSS- SECTION AREA IN SQ	B MAX	L <sub>S</sub> MAX	L <sub>90°</sub> MAX	X MIN ID	Z +.000 -.010 DIA
8	.073	.766	.297	.438	.434	.532
10	.117	.891		.469	.548	.657
12	.206	1.031		.562	.673	.781
14	.384	1.156		.719	.798	.903
16	.443	1.287		.781	.899	1.021
18	.561	1.406		.844	1.024	1.145
20	.693	1.531		.906	1.149	1.270
22	.840	1.656		.938	1.274	1.395
24	.999	1.781		1.031	1.399	1.520

INCHES	MM	INCHES	MM	INCHES	MM	INCHES	MM
.010	.25	.532	13.51	.844	21.44	1.156	29.36
.021	.79	.548	13.92	.891	22.63	1.270	32.23
.073	1.85	.561	14.25	.899	22.83	1.274	32.36
.117	2.97	.562	14.27	.903	22.94	1.287	32.69
.125	3.13	.657	16.69	.906	23.01	1.395	35.43
.206	5.23	.673	17.09	.938	23.83	1.399	35.53
.297	7.54	.693	17.60	.999	25.37	1.406	35.71
.384	9.75	.719	18.26	1.021	25.93	1.520	38.61
.434	11.02	.766	19.46	1.024	26.01	1.531	38.89
.438	11.13	.781	19.84	1.031	26.19	1.656	42.06
.443	11.25	.798	20.27	1.145	29.08	1.781	45.24
.469	11.91	.840	21.34	1.149	29.18		

## NOTES:

- Dimensions are in inches.
- Metric equivalents (to the nearest .01 mm) are given for general information only and are based upon 1 inch = 25.4 mm.
- Material: Translucent nylon.
- Entrance configuration optional with indicated cross-section area.
- A retaining undercut to facilitate attachment of boot to boot ring (MS27485) is permissible.
- For design feature purposes, this standard takes precedence over procurement documents referenced herein.
- Referenced documents shall be of the issue in effect on date of invitation for bid.

P.A. AF-85	International Interest	TITLE BOOT, POTTING, ELECTRICAL CONNECTOR, SERIES II	MILITARY STANDARD
Other Cust ARMY-EL NAVY-AS			MS27486
Procurement Specification MIL-C-38999		SUPERSEDES:	SHEET 2 OF 2

DD FORM 672 (Coordinated) PREVIOUS EDITIONS OF THIS FORM ARE OBSOLETE  
1 SEP 63

\* U.S. GOVERNMENT PRINTING OFFICE: 1975-603-766-2309

Reviewer activities: Army - MI, MU  
Navy - EC, MC, OS  
Air Force - 11, 15, 17, 80  
DSA - ES

This military standard is approved for use by all Departments and Agencies of the Department of Defense. Selection for all new engineering and design applications and for repetitive use shall be made from this document.

APPROVED 8 SEPT 66 REVISED FOR CHANGES SEE SHEET 1, 182