

INCH-POUND

MS27479G

27 June 2012

SUPERSEDING

MS27479F

12 July 2002

DETAIL SPECIFICATION SHEET

CONNECTOR, RECEPTACLE, ELECTRICAL, WALL MOUNTING
FLANGE, CRIMP TYPE, BAYONET COUPLING, SERIES II

Inactive for new design after 27 June 2012.
For new design, use MS27472.

This specification is approved for use by all Departments and Agencies of the Department of Defense.

The requirements for acquiring the product described herein shall consist of this specification sheet and MIL-DTL-38999.

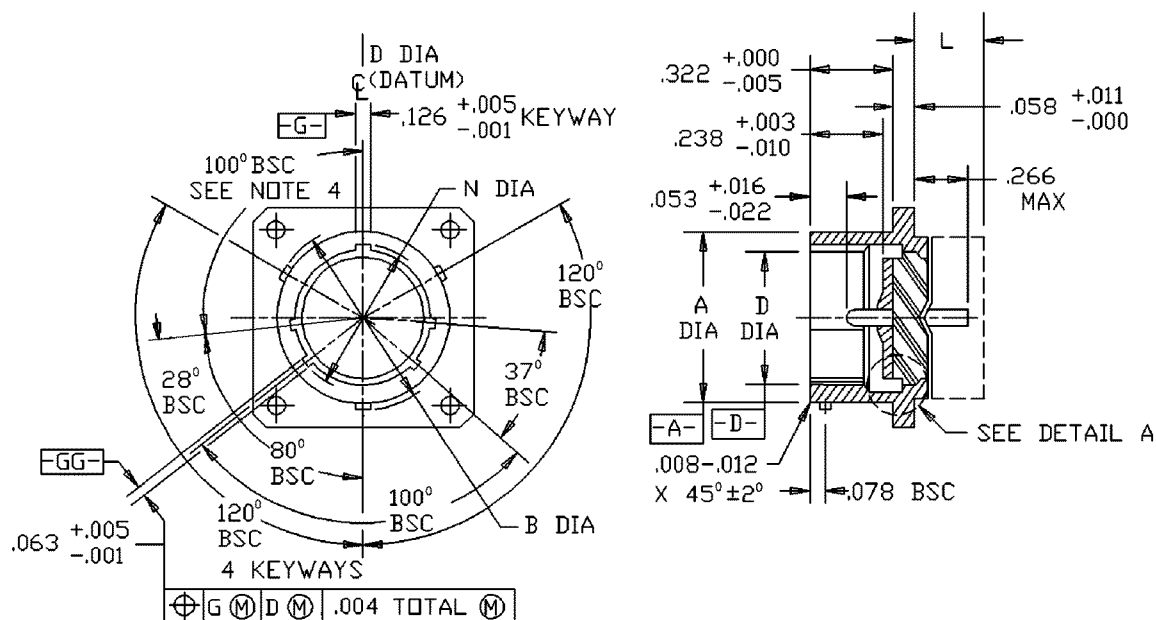


FIGURE 1. Receptacle, classes E and T.

MS27479G

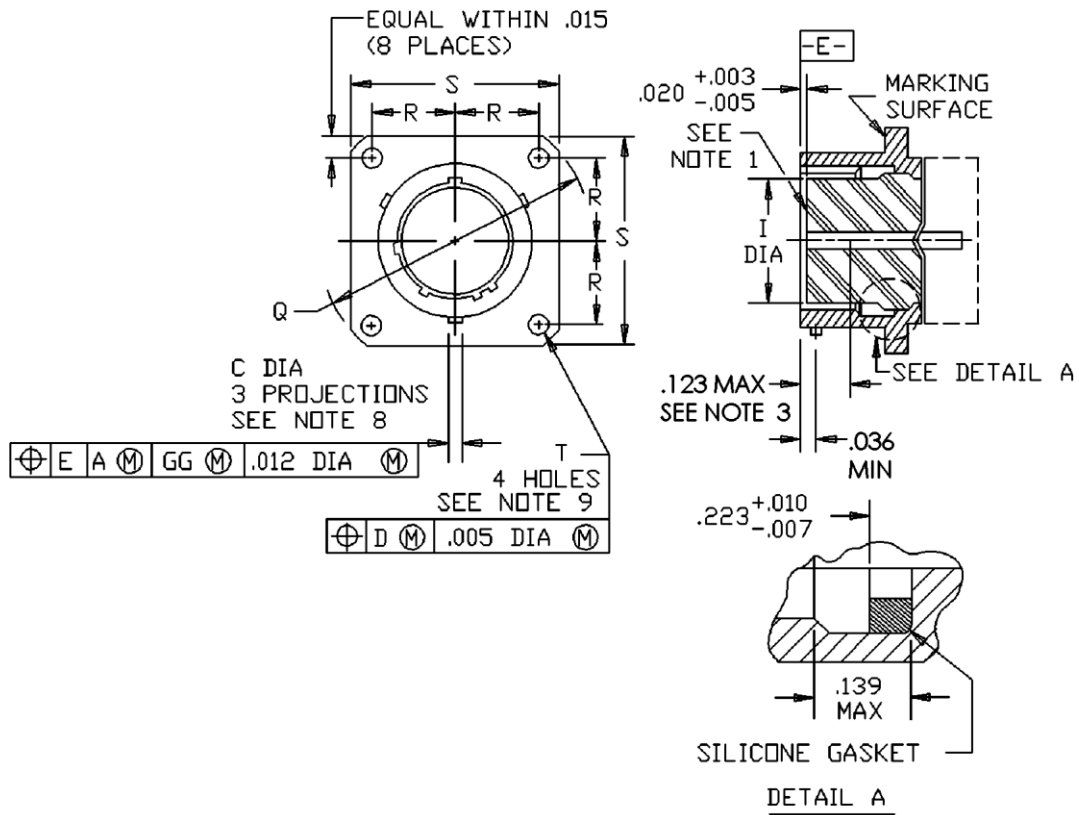


FIGURE 1. Receptacle, classes E and T – Continued.

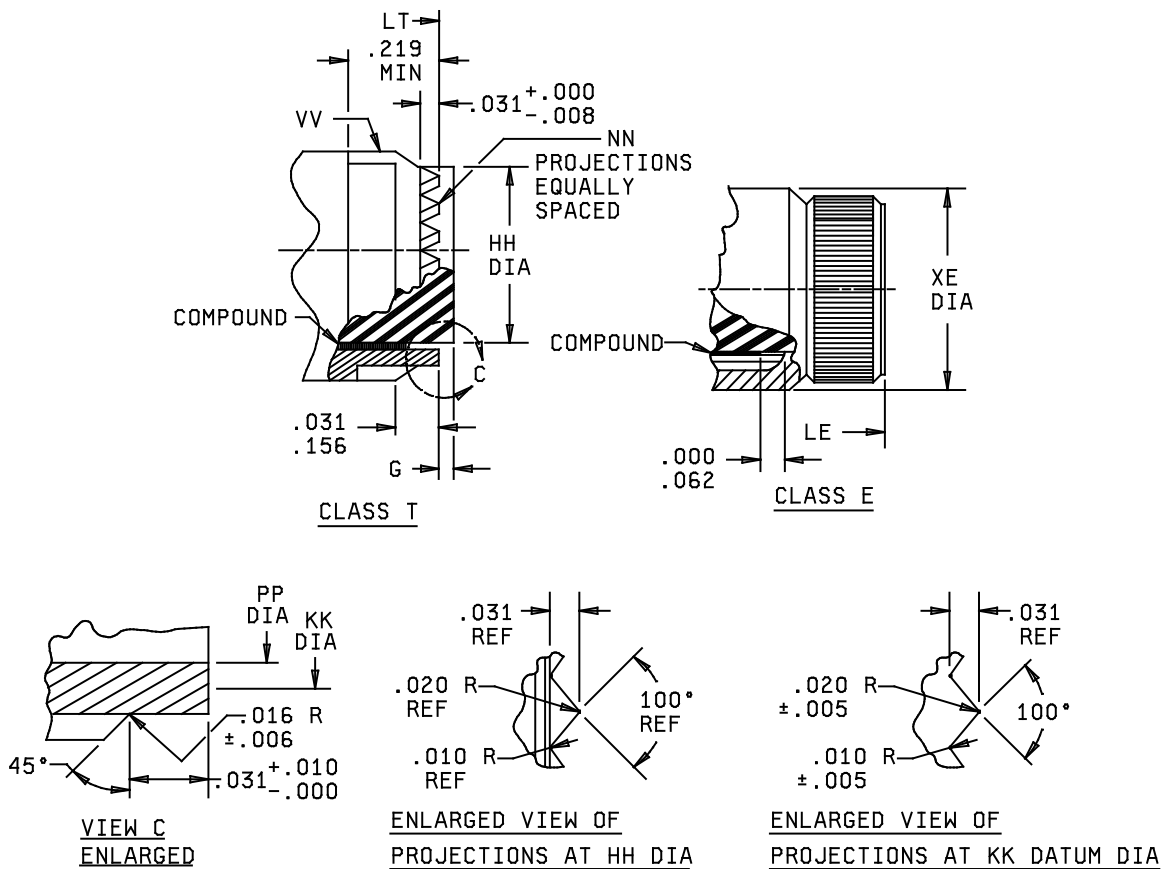
MS27479G

Shell size	A dia +.001 -.005	B dia +.000 -.016 over projection	C dia +.006 -.002	D dia +.005 -.001	I dia ±.005	N dia +.005 -.006
8	.473	.563	.078	.362	.285	.412
10	.590	.680		.490	.413	.540
12	.750	.859		.607	.527	.689
14	.875	.984		.732	.652	.814
16	1.000	1.103		.857	.777	.939
18	1.125	1.233		.962	.866	1.039
20	1.250	1.358	.125	1.087	.991	1.164
22	1.375	1.483		1.212	1.116	1.289
24	1.500	1.610		1.337	1.241	1.414

Shell size	Q max	R BSC	S max	T +.010 -.005	CC	For insert arrangement, see MS drawing
8	1.078	.297	.828	.120	.004	27343, 27516
10	1.266	.3595	.954		.010	27344, 27517
12	1.391	.406	1.047			27345, 27518
14	1.516	.453	1.141			27346, 27519
16	1.641	.4845	1.234			27347, 27520
18	1.766	.531	1.328			27348, 27521
20	1.891	.578	1.453			27349, 27522
22	2.016	.625	1.578			27350, 27523
24	2.204	.6875	1.703	.147		27351, 27524

FIGURE 1. Receptacle, classes E and T – Continued.

MS27479G



NOTES:

1. Insert front surface shall be flat within .005 T.I.R.
2. Dimensions are in inches.
3. The point at which a gage pin, having the same basic diameter as the mating contact and a square face, touches socket contact spring.
4. Normal keyway position. For other keyway positions see MIL-DTL-38999.
5. Diameters A and D shall be concentric within .015 T.I.R.
6. Diameter A with respect to diameter B, and diameter D with respect to diameter N, shall be concentric at MMC.
7. Diameters D and I shall be concentric within .015 T.I.R at MMC.
8. The gauge features for GG shall be CC smaller than their MMC size at basic location.
9. The gauge features for GG shall be .010 smaller than their MMC size at basic location.

FIGURE 1. Receptacle, classes E and T – Continued.

MS27479G

Shell size	G insert projection (class T only)	HH dia +.000 -.005	KK dia (datum)	NN	PP dia ± .003
8	.120 ± .030	.387	.366	12	.344
10		.515	.487	16	.472
12		.628	.609	20	.586
14		.754	.731	24	.711
16		.879	.853	28	.836
18		.985	.974	32	.942
20		1.110	1.097	36	1.067
22		1.235	1.218	40	1.192
24	.0900 ± .050	1.360	1.340	44	1.317

Shell size	LE max overall length	LT max overall length	XE max dia	VV Thread UNEF-2A MOD (plated)	
				Size	Major dia MOD
8	.562	.391	.594	7/16 – 28	.421 – .417
10			.719	9/16 – 24	.542 – .538
12			.844	11/16 – 24	.667 – .663
14			.969	13/16 – 20	.791 – .787
16			1.094	15/16 – 20	.916 – .912
18			1.219	1 1/16 – 18	1.034 – 1.030
20			1.344	1 3/16 – 18	1.158 – 1.154
22			1.469	1 5/16 – 18	1.283 – 1.279
24		.469	1.594	1 7/16 – 18	1.408 – 1.404

FIGURE 1. Receptacle, classes E and T – Continued.

MS27479G

REQUIREMENTS:

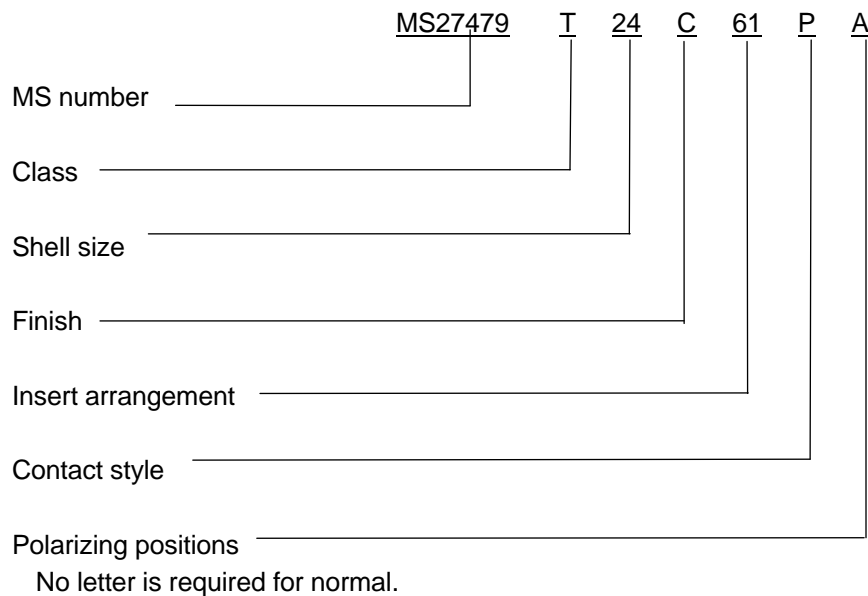
Dimensions and configuration: See figure 1.

Interface dimensions shall conform to MIL-DTL-38999.

This receptacle mates with MS27473, MS27480, MS27484 and MS27500.

Insert arrangements: See MIL-STD-1560.

Part or Identifying Number (PIN) example:



Changes from previous issue. Marginal notations are not used in this revision to identify changes with respect to the previous issue, due to the extent of the changes.

Referenced documents. In addition to MIL-DTL-38999, this document references the following:

MIL-STD-1560
 MS27472
 MS27473
 MS27480
 MS27484
 MS27500

MS27479G

CONCLUDING MATERIAL

Custodians:

Army – CR
Navy – AS
Air Force – 85
DLA – CC

Preparing activity:

DLA – CC

(Project 5935-2012-029)

Review activities:

Army – AR, MI
Navy – EC, MC, OS
Air Force – 19, 99

NOTE: The activities listed above were interested in this document as of the date of this document. Since organizations and responsibilities can change, you should verify the currency of the information above using the ASSIST Online database at <https://assist.dla.mil>.