

INCH-POUND

MS27479F

12 July 2002

SUPERSEDING

MS27479E

13 August 1974

DETAIL SPECIFICATION SHEET

CONNECTOR, RECEPTACLE, ELECTRICAL, WALL MOUNTING
FLANGE, CRIMP TYPE, BAYONET COUPLING, SERIES II

This specification is approved for use by all Departments and Agencies of the Department of Defense.

The requirements for acquiring the product described herein shall consist of this specification and MIL-DTL-38999.

Inactive for new design.

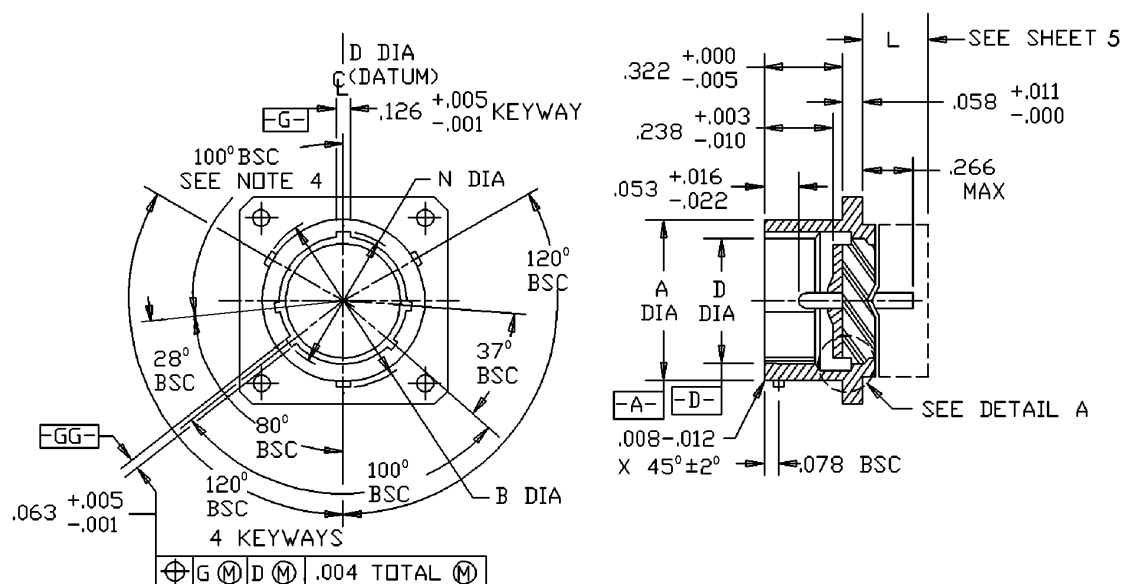


FIGURE 1. ~~Receptacle, classes E and T.~~

MS27479F

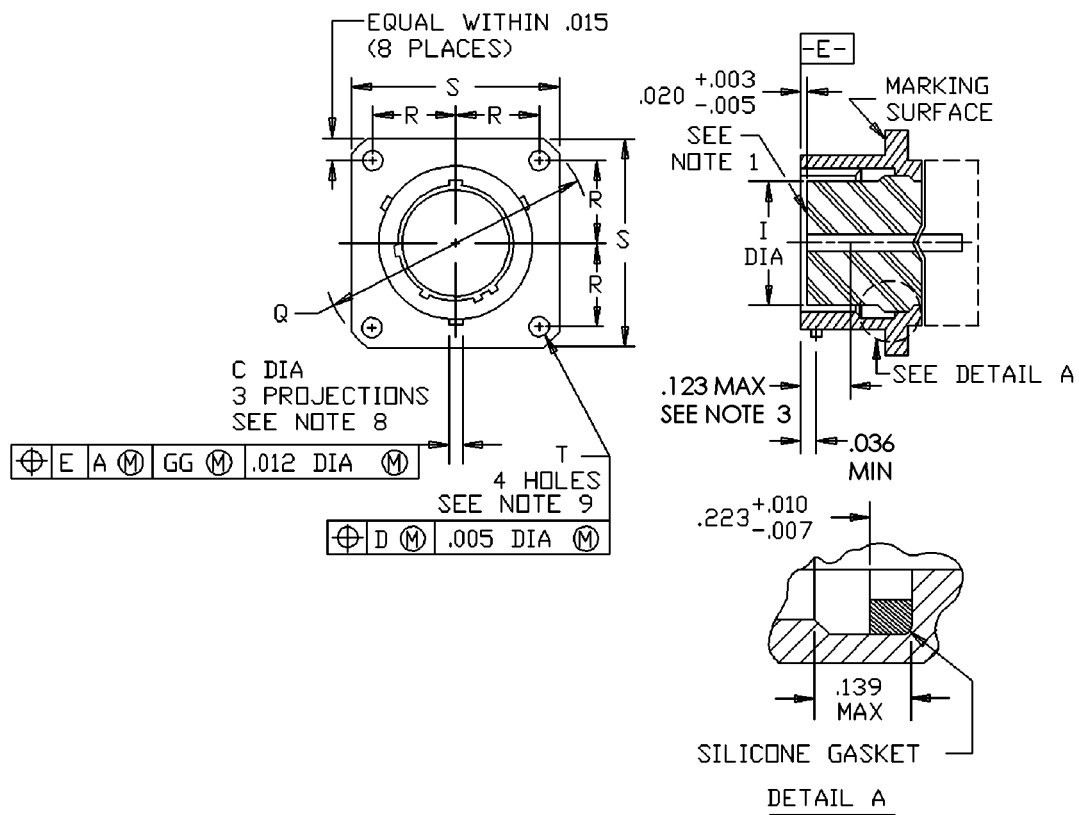


FIGURE 1. Receptacle, classes E and T – Continued.

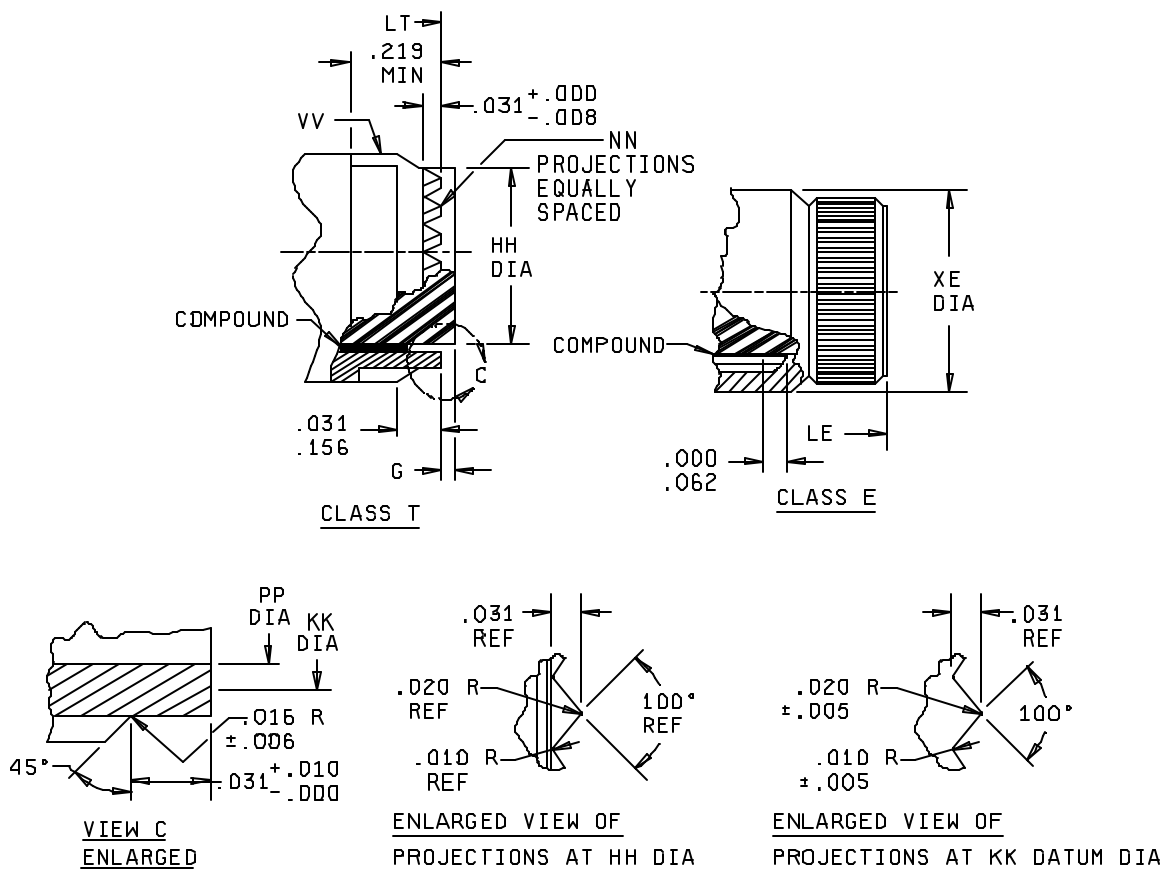
MS27479F

Shell size	A dia +.001 -.005	B dia +.000 -.016 over projection	C dia +.006 -.002	D dia +.005 -.001	I dia ±.005	N dia +.005 -.006
8	.473	.563	.078	.362	.285	.412
10	.590	.680		.490	.413	.540
12	.750	.859		.607	.527	.689
14	.875	.984		.732	.652	.814
16	1.000	1.103		.857	.777	.939
18	1.125	1.233		.962	.866	1.039
20	1.250	1.358	.125	1.087	.991	1.164
22	1.375	1.483		1.212	1.116	1.289
24	1.500	1.610		1.337	1.241	1.414

Shell size	Q Max	R BSC	S Max	T +.010 -.005	CC	For insert arrangement, see MS drawing
8	1.078	.297	.828	.120	.004	27343, 27516
10	1.266	.3595	.954		.010	27344, 27517
12	1.391	.406	1.047			27345, 27518
14	1.516	.453	1.141			27346, 27519
16	1.641	.4845	1.234			27347, 27520
18	1.766	.531	1.328			27348, 27521
20	1.891	.578	1.453			27349, 27522
22	2.016	.625	1.578			27350, 27523
24	2.204	.6875	1.703	.147		27351, 27524

FIGURE 1. Receptacle, classes E and T – Continued.

MS27479F



NOTES:

1. Insert front surface shall be flat within .005 T.I.R.
2. Dimensions are in inches.
3. The point at which a gage pin, having the same basic diameter as the mating contact and a square face, touches socket contact spring.
4. Normal keyway position. For other keyway positions see MIL-DTL-38999.
5. Diameters A and D shall be concentric within .015 T.I.R.
6. Diameter A with respect to diameter B, and diameter D with respect to diameter N, shall be concentric at MMC.
7. Diameters D and I shall be concentric within .015 T.I.R. at MMC.
8. The gauge features for GG shall be CC smaller than their MMC size at basic location.
9. The gauge features for GG shall be .010 smaller than their MMC size at basic location.

FIGURE 1. Receptacle, classes E and T – Continued.

MS27479F

Shell size	G insert projection class T only	HH dia +.000 -.005	KK DATUM dia	NN	PP dia ± .003
8	.120 ± .030	.387	.366	12	.344
10		.515	.487	16	.472
12		.628	.609	20	.586
14		.754	.731	24	.711
16		.879	.853	28	.836
18		.985	.974	32	.942
20		1.110	1.097	36	1.067
22		1.235	1.218	40	1.192
24	.0900 ± .050	1.360	1.340	44	1.317

Shell size	LE max overall length	LT max overall length	XE max dia	VV Thread UNEF-2A MOD (plated)		
				Size	Major dia	MOD
8	.562	.391	.594	7/16 – 28	.421 – .417	
10			.719	9/16 – 24	.542 – .538	
12			.844	11/16 – 24	.667 – .663	
14			.969	13/16 – 20	.791 – .787	
16			1.094	15/16 – 20	.916 – .912	
18			1.219	1 1/16 – 18	1.034 – 1.030	
20			1.344	1 3/16 – 18	1.158 – 1.154	
22			1.469	1 5/16 – 18	1.283 – 1.279	
24		.469	1.594	1 7/16 – 18	1.408 – 1.404	

FIGURE 1. Receptacle, classes E and T – Continued.

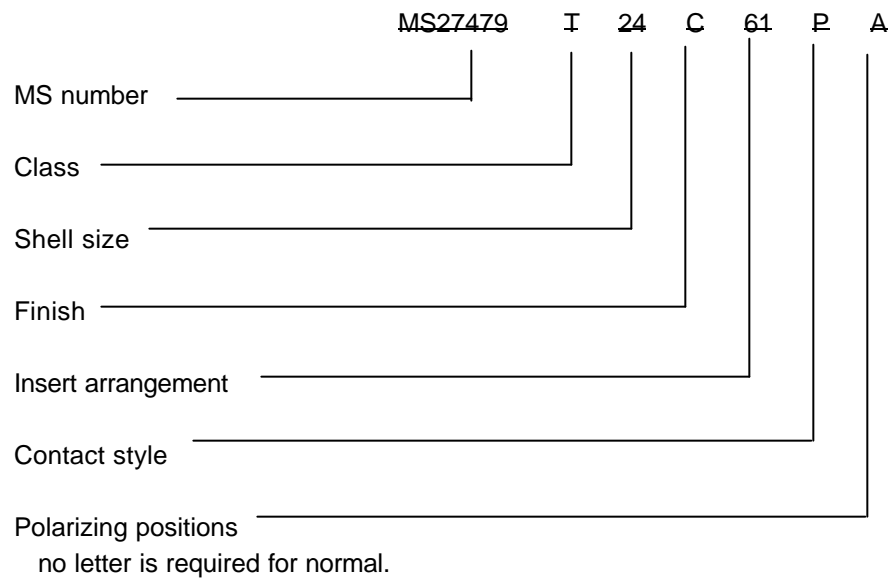
REQUIREMENTS:

MS27479F

Dimensions and configuration: See figure 1. Interface dimensions shall conform to MIL-DTL-38999. This receptacle mates with MS27473, MS27480, MS27484 and MS27500.

Insert arrangements: See MIL-STD-1560.

Part or Identifying Number (PIN) example:



CONCLUDING MATERIAL

Custodians:

Army – CR
Navy – AS
Air Force – 11
DLA – CC

Preparing activity:

DLA – CC

(Project 5935–4373)

Review activities:

Army – AR, MI
Navy – EC, MC, OS
Air Force – 19, 99