

INCH-POUND

MS27477H

12 July 2002

SUPERSEDING

MS27477G

6 February 1985

DETAIL SPECIFICATION SHEET

CONNECTORS, RECEPTACLE, ELECTRICAL, JAM NUT
MOUNTING, SOLDER TYPE, HERMETIC SEAL, SERIES II

This specification is approved for use by all Departments and Agencies of the Department of Defense.

The requirements for acquiring the product described herein shall consist of this specification and MIL-DTL-38999.

Inactive for new design

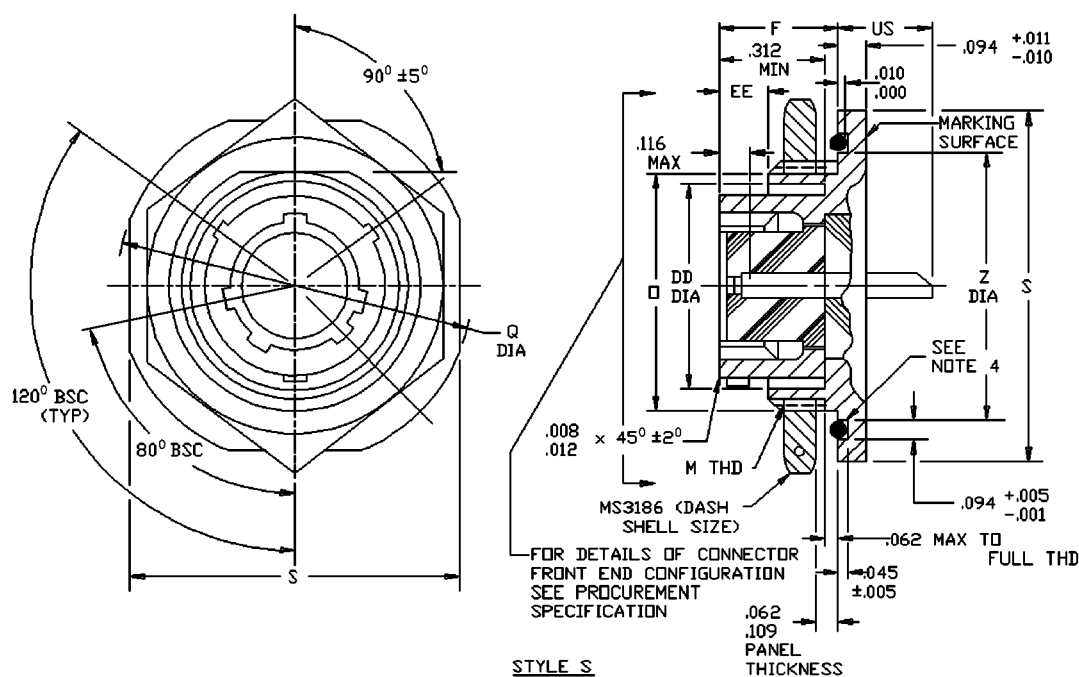


FIGURE 1. Receptacle, class Y.

MS27477H

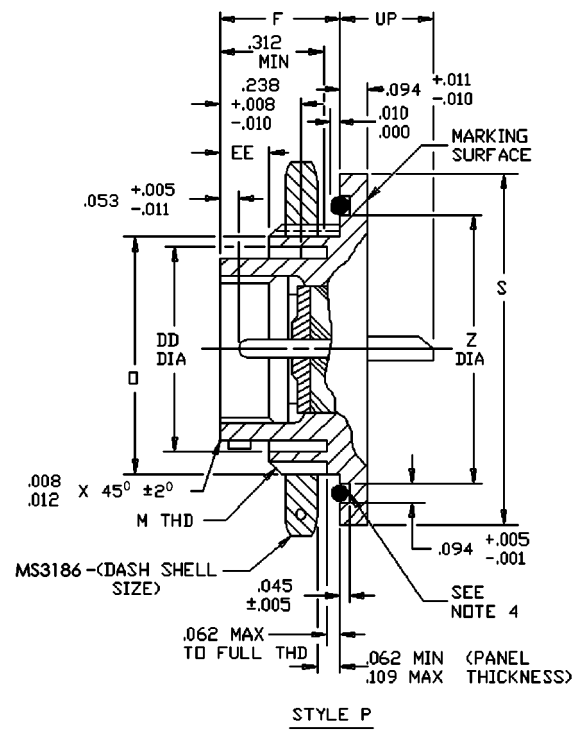


FIGURE 1. Receptacle, class Y – Continued.

MS27477H

Shell size	F $\pm .005$	M Thread, class 2A Plated	O + .001 -.006 flat	Q dia $\pm .016$	S $\pm .016$
8	.438	.875 – 20 UNEF	.817	1.375	1.250
10		1.000 – 20 UNEF	.941	1.500	1.375
12		1.125 – 18 UNEF	1.065	1.625	1.500
14		1.250 – 18 UNEF	1.190	1.750	1.625
16		1.375 – 18 UNEF	1.320	1.938	1.781
18		1.500 – 18 UNEF	1.440	2.016	1.890
20	.464	1.625 – 18 UNEF	1.565	2.141	2.016
22		1.750 – 18 UNS	1.690	2.265	2.140
24		1.875 – 16 UN	1.815	2.390	2.265

Shell size	UP max	US max	Z + .006 -.005 dia	DD min dia	EE + .005 -.000	Recommended Packing ("O" ring) (see note 7)
8	.281	.359	.965	.678	.140	MS9021 - 022
10			1.090	.780		MS9021 – 024
12			1.215	.963		MS9021 – 026
14			1.340	1.088		MS9021 – 028
16			1.477	1.222		MS9021 – 029
18			1.602	1.333		MS9021 – 030
20	.250	.344	1.727	1.458	.166	MS9021 – 031
22			1.852	1.583		MS9021 – 032
24			1.977	1.708		MS9021 – 033

FIGURE 1. Receptacle, class Y – Continued.

MS27477H

Inches	mm	Inches	mm	Inches	mm	Inches	mm
.001	.03	.250	6.35	1.190	30.23	1.727	43.87
.003	.08	.281	7.13	1.215	30.86	1.750	44.45
.005	.13	.312	7.92	1.222	31.04	1.781	45.24
.006	.15	.344	8.74	1.250	31.75	1.815	46.10
.008	.20	.359	9.12	1.320	33.53	1.852	47.04
.010	.25	.438	11.13	1.333	33.86	1.875	47.63
.011	.28	.464	11.79	1.340	34.04	1.890	48.00
.012	.30	.678	17.22	1.375	34.95	1.938	49.23
.016	.41	.780	19.81	1.440	36.58	1.977	50.22
.045	1.14	.817	20.75	1.458	37.03	2.016	51.21
.053	1.35	.875	22.23	1.477	37.52	2.140	54.36
.062	1.57	.941	23.90	1.500	38.10	2.141	54.38
.094	2.39	.963	24.46	1.565	39.75	2.265	57.53
.109	2.77	1.000	25.40	1.583	40.21	2.390	60.71
.116	2.95	1.065	27.05	1.602	40.69		
.140	3.56	1.088	27.64	1.625	41.28		
.166	4.22	1.090	17.69	1.690	42.93		
.238	6.05	1.125	28.58	1.708	43.38		

NOTES:

1. Dimensions are in inches.
2. Metric equivalents are given for general information only.
3. Jam nut mounting receptacles shall be provided with an "O" ring.
4. Sides of groove may have 5° maximum taper.
5. For main key polarization and key positions, see MIL-DTL-38999.
6. Diameters M, Q and Z shall be concentric within .015 T.I.R.
7. Recommended packing is for dimensions only, material is optional.

FIGURE 1. Receptacle, class Y – Continued.

MS27477H

REQUIREMENTS:

Dimensions and configuration: See figure 1. Interface dimensions shall conform to MIL-DTL-38999.
This receptacle mates with MS27473, MS27480, MS27484 and MS27500.

Part or Identifying Number (PIN) example:



CONCLUDING MATERIAL

Custodians:

Army – CR
Navy – AS
Air Force – 11
DLA – CC

Preparing activity:

DLA – CC

(Project 5935–4370)

Review activities:

Army – MI
Navy – EC, MC, OS
Air Force – 19, 80, 99