

INCH-POUND

MS27474G

12 July 2002

SUPERSEDING

MS27474F

2 January 1976

DETAIL SPECIFICATION SHEET

CONNECTORS, RECEPTACLE, ELECTRICAL, JAM NUT
MOUNTING, CRIMP TYPE, BAYONET COUPLING, SERIES II

This specification is approved for use by all Departments
and Agencies of the Department of Defense.

The requirements for acquiring the product described herein
shall consist of this specification and MIL-DTL-38999.

Inactive for new design.

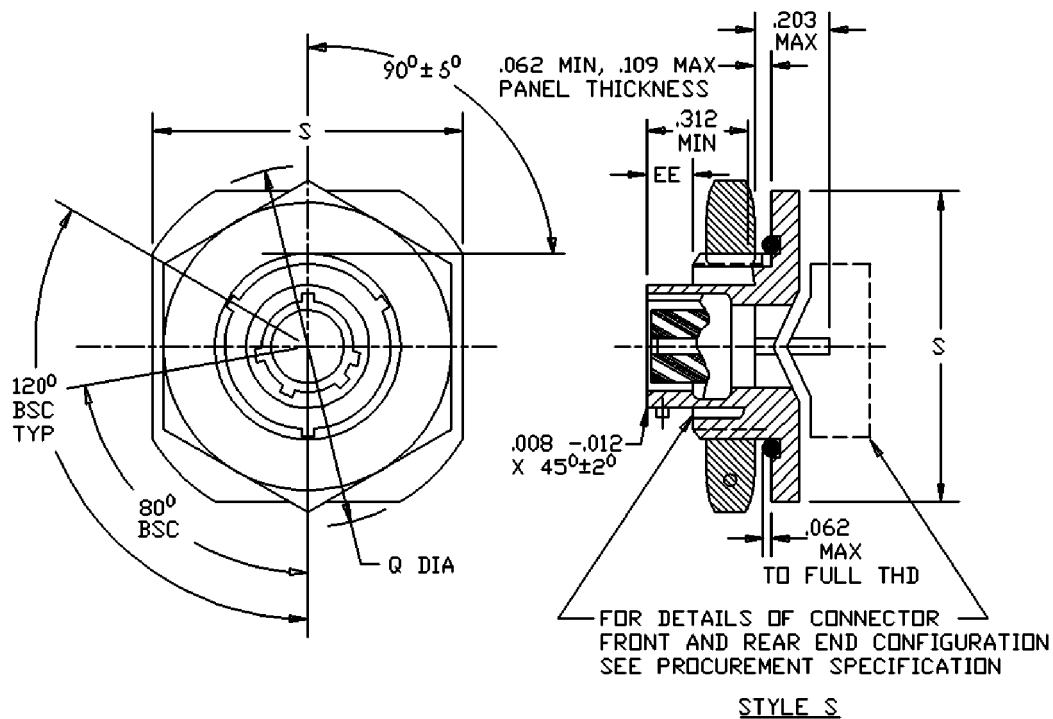
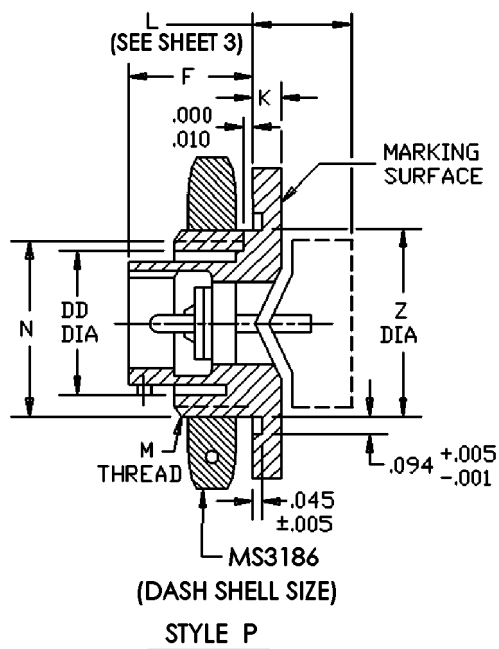


FIGURE 1. Receptacle, classes E, T and P.

MS27474G



Shell size	DD dia +.010 -.000	EE +.005 .000	F ±.005	K +.011 -.010	M thd class 2A plated	N +.001 -.006 flat	Q dia ±.016	S ±.016	Z +.006 -.005 dia
8	.678	.140	.438	.094	.875 – 20 UNEF	.817	1.375	1.250	.965
10	.780				1.000 – 20 UNEF	.941	1.500	1.375	1.090
12	.963				1.125 – 18 UNEF	1.065	1.625	1.500	1.215
14	1.088				1.250 – 18 UNEF	1.190	1.750	1.625	1.340
16	1.222				1.375 – 18 UNEF	1.320	1.938	1.781	1.477
18	1.333				1.500 – 18 UNEF	1.440	2.016	1.890	1.602
20	1.458	.166	.464		1.625 – 18 UNEF	1.565	2.141	2.016	1.727
22	1.583				1.750 – 18 UNS	1.690	2.265	2.140	1.852
24	1.708				1.875 – 16 UN	1.815	2.390	2.265	1.977

FIGURE 1. Receptacle, classes E, T and P – Continued.

MS27474G

Shell size	Nut MS3186	LE max length	LT max length	LP max length	Recommended packing ("O" ring) (see note 7)
8	- 8	.516	.344	.578	MS9021 – 022
10	- 10				MS9021 – 024
12	- 12				MS9021 – 026
14	- 14				MS9021 – 028
16	- 16				MS9021 – 029
18	- 18				MS9021 – 030
20	- 20	.484	.312	.547	MS9021 – 031
22	- 22				MS9021 – 032
24	- 24		.375	.516	MS9021 – 034

FIGURE 1. Receptacle, classes E, T and P - Continued.

MS27474G

Inches	mm	Inches	mm	Inches	mm	Inches	mm
.001	.03	.312	7.92	1.088	27.64	1.625	41.28
.005	.13	.344	8.74	1.090	17.69	1.690	42.93
.006	.15	.375	9.53	1.125	28.58	1.708	43.38
.007	.18	.438	11.13	1.190	30.23	1.727	43.87
.008	.20	.464	11.79	1.215	30.86	1.750	44.45
.010	.25	.484	12.29	1.222	31.04	1.781	45.24
.011	.28	.516	13.11	1.250	31.75	1.815	46.10
.012	.30	.547	13.89	1.320	33.53	1.852	47.04
.016	.41	.578	14.68	1.333	33.86	1.875	47.63
.045	1.14	.678	17.22	1.340	34.04	1.890	48.00
.062	1.57	.780	19.81	1.375	34.95	1.977	50.22
.094	2.39	.817	20.75	1.440	36.58	2.016	51.21
.109	2.77	.875	22.23	1.458	37.03	2.140	54.36
.139	3.53	.941	23.90	1.477	37.52	2.265	57.53
.140	3.56	.963	24.46	1.500	38.10	2.390	60.71
.166	4.22	.965	24.51	1.565	39.75		
.203	5.16	1.000	25.40	1.583	40.21		
.223	5.66	1.065	27.05	1.602	40.69		

NOTES:

1. Dimensions are in inches.
2. Metric equivalents are given for general information only.
3. Jam nut mounting receptacles shall be provided with an "O" ring.
4. Sides of groove may have 5° maximum taper.
5. For main key polarization and key positions, see MIL-DTL-38999.
6. Diameters M, Q and Z shall be concentric within .015 T.I.R.
7. Recommended packing is for dimensions only, material is optional.

FIGURE 1. Receptacle, classes E, T and P - Continued.

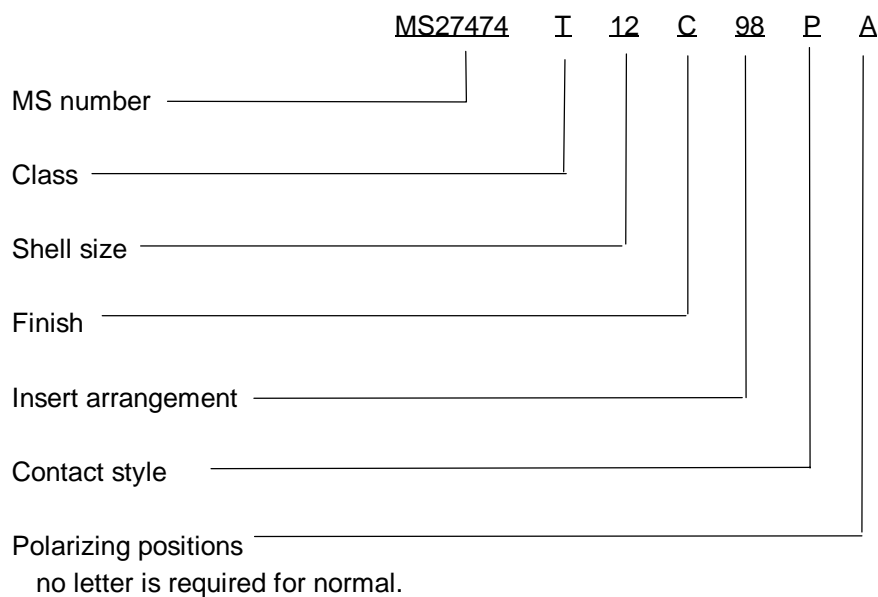
MS27474G

REQUIREMENTS:

Dimensions and configuration: See figure 1. Interface dimensions shall conform to MIL-DTL-38999.
This receptacle mates with MS27473, MS27480, MS27484 and MS27500.

Insert arrangements: See MIL-STD-1560.

Part or Identifying Number (PIN) example:



CONCLUDING MATERIAL

Custodians:

Army - CR
Navy - AS
Air Force - 11
DLA - CC

Preparing activity:

DLA - CC

(Project 5935-4367)

Review activities:

Army - AR, MI
Navy - EC, MC, OS
Air Force - 19, 99
DLA - IS