

INCH-POUND

MS27472J
w/AMENDMENT 1
15 November 2012
SUPERSEDING
MS27472J
2 February 2012

DETAIL SPECIFICATION SHEET

CONNECTORS, RECEPTACLE, ELECTRICAL, WALL MOUNTING
FLANGE, CRIMP TYPE, BAYONET COUPLING, SERIES II

Reactivated after 24 May 2004 and may be used
for new and existing designs and acquisitions.

This specification is approved for use by all Departments
and Agencies of the Department of Defense.

The requirements for acquiring the product described herein
shall consist of this specification sheet and MIL-DTL-38999.

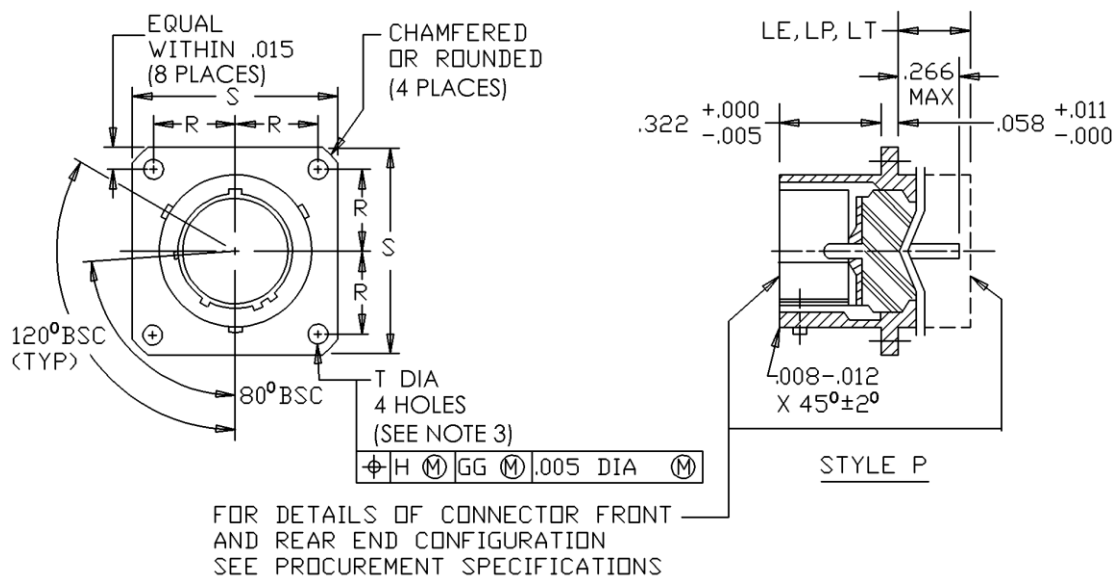
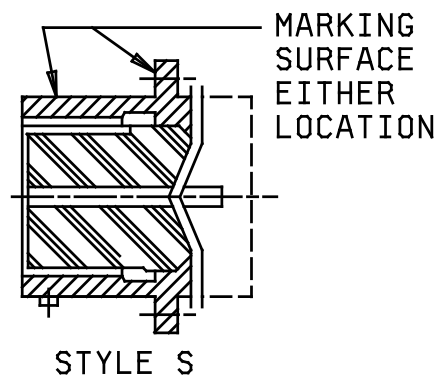


FIGURE 1. Receptacle, classes E, P and T.

MS27472J
w/AMENDMENT 1



Shell size	LE (class E) max length	LP (class P) max length	LT (class T) max length	R BSC	S max	T +.010 -.005
8	.562	.641	.391	.297	.828	.120
10				.3595	.954	
12				.406	1.047	
14				.453	1.141	
16				.4845	1.234	
18				.531	1.328	
20				.578	1.453	
22				.625	1.578	
24		.703	.469	.6875	1.703	.147

FIGURE 1. Receptacle, classes E, P and T - Continued.

MS27472J
w/AMENDMENT 1

Inches	mm	Inches	mm	Inches	mm	Inches	mm
.005	0.13	.266	6.70	.625	15.88	1.391	35.33
.007	0.18	.207	7.54	.641	16.28	1.453	36.91
.008	0.20	.322	8.18	.6875	17.46	1.516	38.51
.010	0.25	.3595	9.13	.703	17.86	1.578	40.08
.011	0.28	.301	9.93	.828	21.03	1.041	41.62
.012	0.30	.400	10.31	.954	24.23	1.703	43.26
.015	0.38	.453	11.51	1.047	26.59	1.786	45.36
.058	1.47	.469	11.91	1.078	27.38	1.891	48.03
.120	3.05	.4845	12.31	1.141	28.98	2.016	51.21
.139	3.53	.531	13.49	1.234	31.34	2.204	55.98
.147	3.73	.562	14.27	1.266	32.15		
.223	5.66	.578	14.68	1.328	33.73		

NOTES:

1. Dimensions are in inches.
2. Metric equivalents are given for information only.
3. The gauge features for GG shall be .010 inch (0.25 mm) smaller than the MMC size at basic location.
4. For main keyway and keyway positions, see MIL-DTL-38999.
5. Applicable potting forms for class P: SAE-AS85049/58 and SAE-AS85049/75

FIGURE 1. Receptacle, classes E, P and T - Continued.

MS27472J
w/AMENDMENT 1

REQUIREMENTS:

Dimensions and configuration: See figure 1.

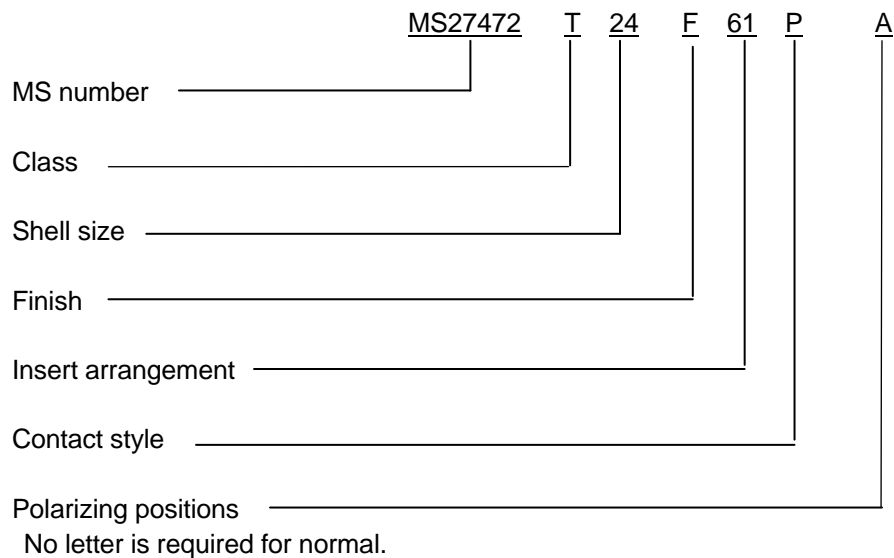
Interface dimensions shall be in accordance with MIL-DTL-38999.

This receptacle mates with MS27473, MS27480, MS27484 and MS27500.

Insert arrangements: See MIL-STD-1560.

For class E, compression nut in accordance with SAE-AS85049/27 shall be included.

Part or Identifying Number (PIN) example:



Restrictions.

Class E is inactive for new design.

Class P is inactive for new design for the Air Force.

Finish F is not for Navy use. Finish F is inactive for new design for the Air Force.

Amendment notations. The margins of this specification are marked with vertical lines to indicate modifications generated by this amendment. This was done as a convenience only and the Government assumes no liability whatsoever for any inaccuracies in these notations. Bidders and contractors are cautioned to evaluate the requirements of this document based on the entire content irrespective of the marginal notations.

Referenced documents. In addition to MIL-DTL-38999, this document references the following:

MIL-STD-1560
MS27473
MS27480
MS27484
MS27500
SAE-AS85049/27
SAE-AS85049/58
SAE-AS85049/75

MS27472J
w/AMENDMENT 1

CONCLUDING MATERIAL

Custodians:

Army - CR
Navy - AS
Air Force – 85
DLA - CC

Preparing activity:

DLA - CC

(Project 5935-2012-195)

Review activities:

Army - AR, MI
Navy - EC, MC, OS
Air Force - 19, 99
DLA – IS

NOTE: The activities listed above were interested in this document as of the date of this document. Since organizations and responsibilities can change, you should verify the currency of the information above using the ASSIST Online database at <https://assist.dla.mil>.