

INCH-POUND

MS27471F
 12 July 2002
 SUPERSEDING
 MS27471E
 2 January 1976

DETAIL SPECIFICATION SHEET

CONNECTORS, RECEPTACLE, ELECTRICAL, SOLDER
 MOUNTING, SOLDER TYPE, HERMETIC SEAL, SERIES I

This specification is approved for use by all Departments
 and Agencies of the Department of Defense.

The requirements for acquiring the product described herein
 shall consist of this specification and MIL-DTL-38999.

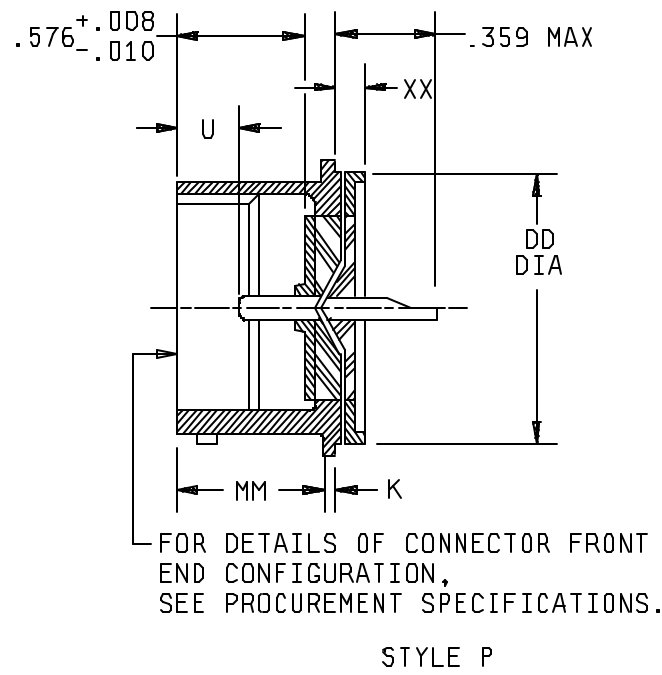


FIGURE 1. ~~Receptacle, class Y.~~

MS27471F

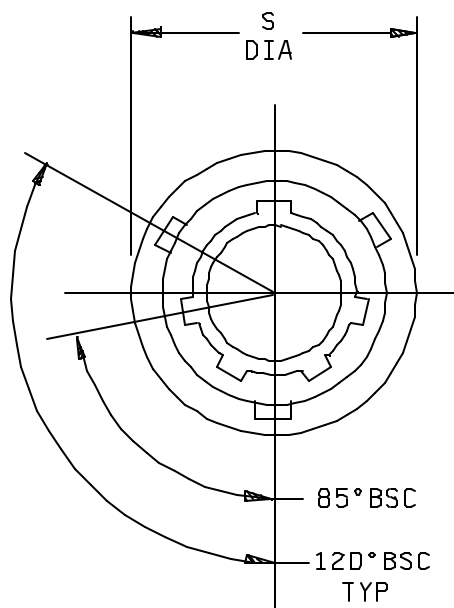
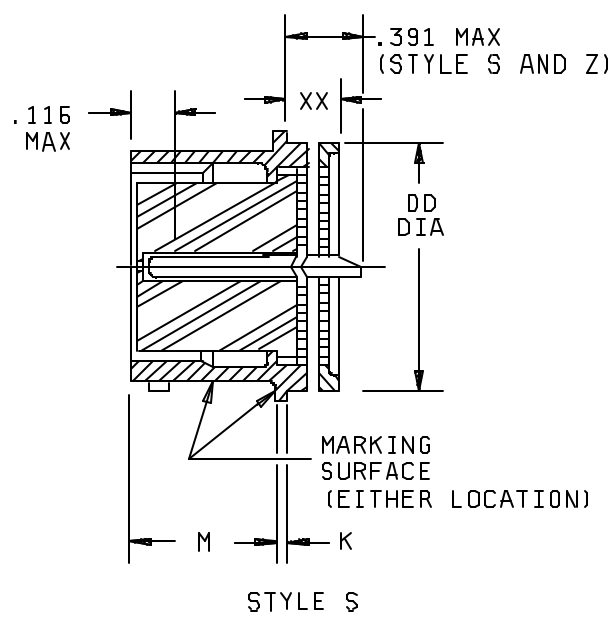


FIGURE 1. Receptacle, class Y - Continued.

MS27471F

Shell size	K + .016 - .005	M + .031 - .000	MM + .031 - .000	DD dia + .001 - .005	S dia ± .016 O.D.	U + .005 - .011	XX max
9	.031	.747	.659	.672	.750	.390	.187
11				.781	.844		
13				.906	.969		
15				1.031	1.094		
17				1.156	1.218		
19				1.250	1.312		
21				1.375	1.438		
23				1.500	1.563		.218
25				1.625	1.688		

Inches	mm	Inches	mm	Inches	mm	Inches	mm
.001	0.03	.116	2.95	.672	17.07	1.156	29.36
.004	0.10	.126	3.18	.747	18.97	1.218	30.94
.005	0.13	.187	4.75	.750	19.05	1.250	31.75
.008	0.20	.218	5.54	.781	19.84	1.312	33.32
.010	0.25	.359	9.12	.844	21.44	1.375	34.93
.011	0.29	.390	9.91	.906	23.01	1.438	36.53
.016	0.41	.391	9.93	.969	24.61	1.500	38.10
.031	0.79	.576	14.63	1.031	26.19	1.563	39.70
.063	1.60	.659	16.74	1.094	27.79	1.625	41.28
						1.688	42.88

NOTES:

1. Dimensions are in inches.
2. Metric equivalents are given for general information only.
3. For main keyway and keyway positions, see MIL-DTL-38999.
4. Diameters DD and S shall be concentric with .015 TIR.

FIGURE 1. Receptacle, class Y - Continued.

MS27471F

REQUIREMENTS:

Dimensions and configuration: See figure 1.

Interface dimensions shall conform to MIL-DTL-38999.

Mating connectors: MS27467, MS27661 and MS27653.

Insert arrangements: See MIL-STD-1560.

Part or Identifying Number (PIN) example:



CONCLUDING MATERIAL

Custodians:

Army - CR
Navy - AS
Air Force - 11
DLA - CC

Preparing activity:

DLA - CC

(Project: 5935-4396)

Review activities:

Army - AR, MI
Navy - EC, MC, OS
Air Force - 19, 99