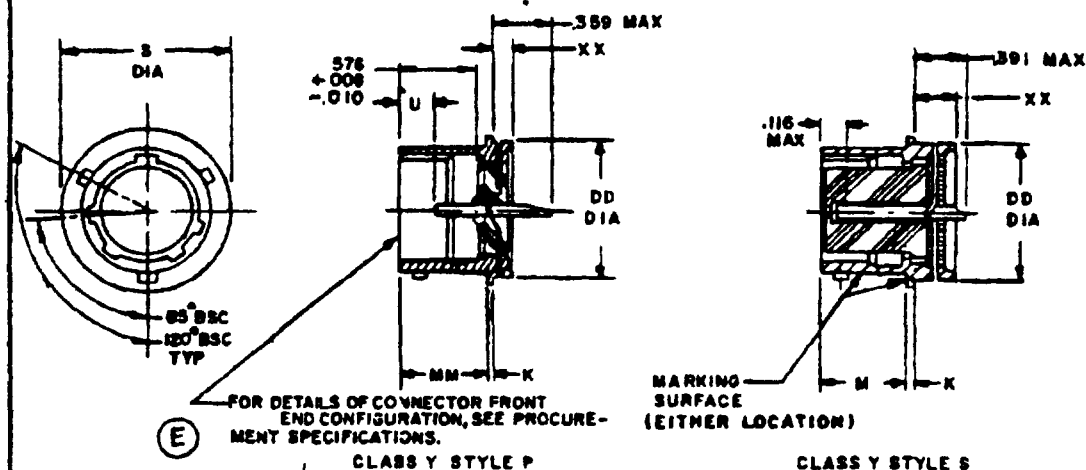


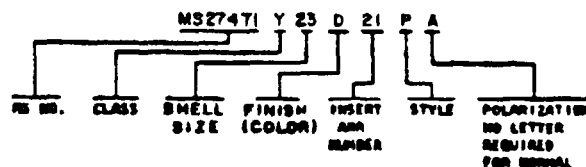
FED SUP CLASS  
5935User activities: Army -  
Navy -  
Air Force -Army - ML MU  
Navy - EC, MC, OS  
Air Force - 11, 15, 17, 80  
DSA - E3

Reviewer activities:

This military standard is approved for use by all Departments and Agencies of the Department of Defense. Selection for all new engineering and design applications and for repetitive use shall be made from this document.



## EXAMPLE OF PART NUMBER



(E) FOR CHANGES SEE SHEETS 1 &amp; 2

|  |                        |  |                   |
|--|------------------------|--|-------------------|
| PA AF-85                                 | International Interest | TITLE<br>CONNECTOR, RECEPTACLE, ELECTRICAL<br>SOLDER MOUNTING, SOLDER TYPE,<br>HERMETIC SEAL, SERIES I | MILITARY STANDARD |
| Other Cust<br>ARMY-EL<br>NAVY-AS         |                        |  | MS27471           |
| Procurement Specification<br>MIL-C-38999 |                        | SUPERSEDES<br>MS27471 (USAF)   | SHEET 1 OF 2      |

DD FORM 672  
1 SEP 63

PREVIOUS EDITIONS OF THIS FORM ARE OBSOLETE

5935-2005-12

APPROVED 8 SEP 1966 REVISED (D) 13 AUG 74 (E) 2 JAN 1976

FED SUP CLASS  
5935

| SHELL<br>SIZE | K<br>+.016<br>-.005 | M<br>+.031<br>-.000 | MM<br>+.031<br>-.000 | DD<br>DIA<br>+.001<br>-.005 | S<br>DIA<br>+.016<br>O.D | U<br>+.005<br>-.011 | XX<br>MAX                           |
|---------------|---------------------|---------------------|----------------------|-----------------------------|--------------------------|---------------------|-------------------------------------|
| 9             | ↑<br>.031<br>↓      | ↑<br>.747<br>↓      | ↑<br>.659<br>↓       | .672                        | .750                     | ↑<br>.390<br>↓      | ↑<br>.187<br>↓<br>.218<br>↓<br>.218 |
| 11            |                     |                     |                      | .781                        | .844                     |                     |                                     |
| 13            |                     |                     |                      | .906                        | .969                     |                     |                                     |
| 15            |                     |                     |                      | 1.031                       | 1.094                    |                     |                                     |
| 17            |                     |                     |                      | 1.156                       | 1.218                    |                     |                                     |
| 19            |                     |                     |                      | 1.250                       | 1.312                    |                     |                                     |
| 21            |                     |                     |                      | 1.375                       | 1.438                    |                     |                                     |
| 23            |                     |                     |                      | 1.500                       | 1.563                    |                     |                                     |
| 25            |                     |                     |                      | 1.625                       | 1.688                    |                     |                                     |

| INCHES | MM   | INCHES | MM    | INCHES | MM    | INCHES | MM    |
|--------|------|--------|-------|--------|-------|--------|-------|
| .001   | .03  | .116   | 2.95  | .672   | 17.07 | 1.156  | 29.36 |
| .004   | .10  | .126   | 3.18  | .747   | 18.97 | 1.218  | 30.94 |
| .005   | .13  | .187   | 4.75  | .750   | 19.05 | 1.250  | 31.75 |
| .008   | .20  | .218   | 5.54  | .781   | 19.84 | 1.312  | 33.32 |
| .010   | .25  | .359   | 9.12  | .844   | 21.44 | 1.375  | 34.93 |
| .011   | .29  | .390   | 9.91  | .906   | 23.01 | 1.438  | 36.53 |
| .016   | .41  | .391   | 9.93  | .969   | 24.61 | 1.500  | 38.10 |
| .031   | .79  | .576   | 14.63 | 1.031  | 26.19 | 1.563  | 39.70 |
| .063   | 1.60 | .659   | 16.74 | 1.094  | 27.79 | 1.625  | 41.28 |
|        |      |        |       |        |       | 1.688  | 42.88 |

## NOTES.

- Dimensions are in inches.
- Metric equivalents (to the nearest .01 mm) are given for general information only and are based upon 1 inch = 25.4 mm.
- For main keyway and keyway positions, see MIL-C-38999.
- Diameters DD and S shall be concentric within .015 T.I R.
- For design feature purposes, this standard takes precedence over documents referenced herein.
- Referenced documents shall be of the issue in effect on date of invitation for bid.

|  |                           |  |                              |
|--|---------------------------|--|------------------------------|
| P A AF-85                                | International<br>Interest | TITLE<br>CONNECTOR, RECEPTACLE, ELECTRICAL<br>SOLDER MOUNTING, SOLDER TYPE,<br>HERMETIC SEAL, SERIES I | MILITARY STANDARD<br>MS27471 |
| Other Cust<br>ARMY-EL<br>NAVY AS         |                           | SUPERSEDES:  |                              |
| Procurement Specification<br>MIL-C-38999 |                           |  | SHEET 2 OF 2                 |

DD FORM 672 (Coordinated) PREVIOUS EDITIONS OF THIS FORM ARE OBSOLETE

This military standard is approved for use by all Departments and Agencies of the Department of Defense. Selection for all new engineering and design applications and for repetitive use shall be made from this document.

Reviewer activities: Army - MD, MU, OS; Navy - EC, NC; Air Force - II, IS, 17, 80, DSA - ES.

User activities: Army - ; Navy - ; Air Force - .

APPROVED 8 SEP 1966 REVISED 13 AUG 74 (E) FOR CHANGES SEE SHEETS 1 &amp; 2