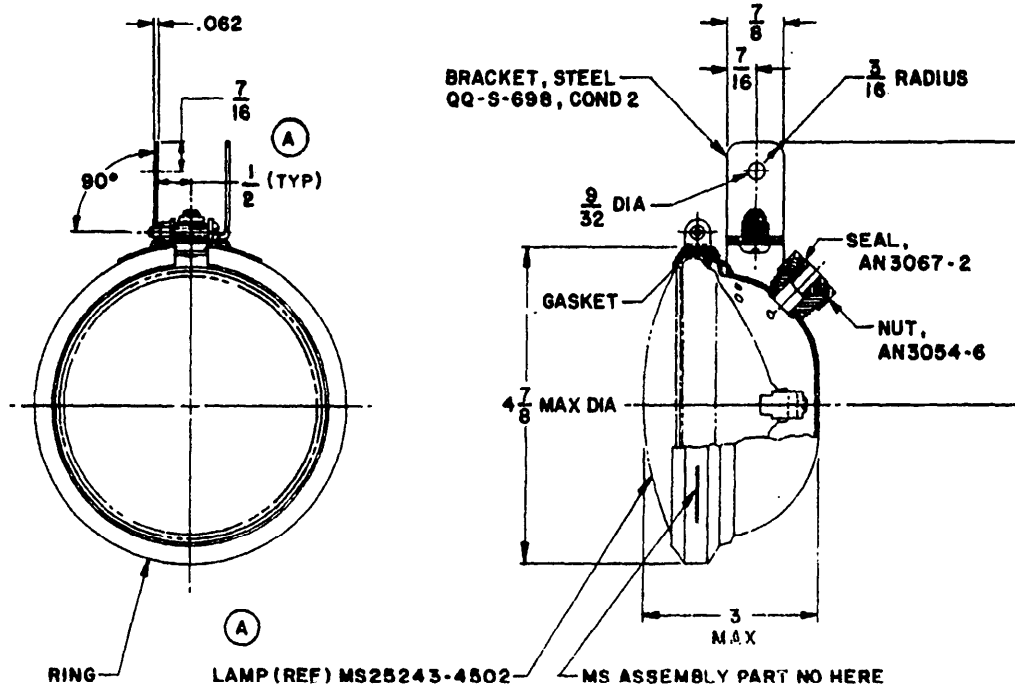


FED. SUP CLASS
6220

MS PART NO
MS 27432-1

NOTES

1. MATERIAL HOUSING SHALL BE FABRICATED OF ALUMINUM OR STEEL AND DESIGNED TO HOLD A PAR 36 SCREW TERMINAL LAMP. FOUR INDEXING NOTCHES SHALL BE PROVIDED 90° APART THEY SHALL BE LOCATED SO THAT THE LAMP MAY BE POSITIONED TO HAVE WIDE BEAM HORIZONTAL WHEN THE MOUNTING BRACKET IS AT THE TOP, BOTTOM, OR AT EITHER SIDE.
2. FINISH ALL METAL PARTS OF THE LIGHT SHALL BE FINISHED WITH ONE COAT OF ZINC-CHROMATE PRIMER, SPECIFICATION TT-P-1757 AND TWO COATS OF GRAY ZINC-CHROMATE BASE PAINT.
3. DIMENSIONS IN INCHES UNLESS OTHERWISE SPECIFIED, TOLERANCES: DECIMALS $\pm .016$, FRACTIONS $\pm 1/64$, ANGLES $\pm 2^\circ$.
4. PART NUMBER SPECIFIED IS FOR LIGHT ASSEMBLY WITHOUT LAMP. IF SHIPMENT WITH LAMP INSTALLED IS DESIRED, THE PART NUMBER OF EACH SHOULD BE SPECIFIED.
5. THE LAMP CLAMPING ASSEMBLY SHALL BE DESIGNED TO PREVENT UNEQUAL STRESSES FROM BEING IMPOSED ON THE LAMP DURING HEATING AND COOLING. THE DESIGN SHALL BE SUCH TO FACILITATE RELAMPING AND TO INSURE PROPER POSITIONING AND HOLDING OF LAMP.
6. THE MOUNTING BRACKET SHALL BE SECURELY ATTACHED TO THE HOUSING SO THAT IT WILL NOT BECOME LOOSE IN SERVICE. IT SHALL BE DESIGNED SO THAT IT MAY BE ADJUSTED THROUGH 360° AROUND THE SCREW BY WHICH IT IS ATTACHED TO THE HOUSING. THE SCREW SHALL BE SECURED SO THAT IT WILL NOT TURN WHEN THE NUT THAT HOLDS THE BRACKET IS DRAWN DOWN.
7. THE COUPLING FOR LEAD ENTRANCE SHALL CONSIST OF A RUBBER GROMMET AND A COMPRESSION FITTING WITH A KNURLED NUT. THE THREADED SECTION OF THE COUPLING SHALL BE SECURELY HELD IN THE HOUSING SO THAT IT WILL NOT TURN WHEN THE KNURLED NUT IS DRAWN DOWN.
8. ASSEMBLIES OF SLIGHTLY DIFFERENT DESIGN THAN SHOWN WILL BE SATISFACTORY, PROVIDED SPECIFIED DIMENSIONS AND OTHER REQUIREMENT ARE MET.
9. FOR DESIGN FEATURE PURPOSES, THIS STANDARD TAKES PRECEDENCE OVER PROCUREMENT DOCUMENTS REFERENCED HEREIN.
10. REFERENCED DOCUMENTS SHALL BE OF THE ISSUE IN EFFECT ON DATE OF INVITATIONS FOR BID.

REVIEWER: DLA - GS

This standard has been approved by the San Antonio Air Material Area Department of the Air Force and is mandatory for use by that activity. All other military activities are required to employ this standard where suitable.

P.A. AIR FORCE - 92 (A)	TITLE	MILITARY STANDARD
Other Cost	LIGHT ASSEMBLY, TAXI (PAR 36 BULB)	MS27432 (USAF)
AIR FORCE - 99		
PROCUREMENT SPECIFICATION MIL-L-6723	SUPSEDES. AN3176	SHEET 1 OF 1

DD FORM 672-1 (Limited coordination)

PREVIOUS EDITIONS OF THIS FORM ARE OBSOLETE.

PROJECT 6220-F271

APPROVED 13 JUL 66 REVISED 23 MAR 83