

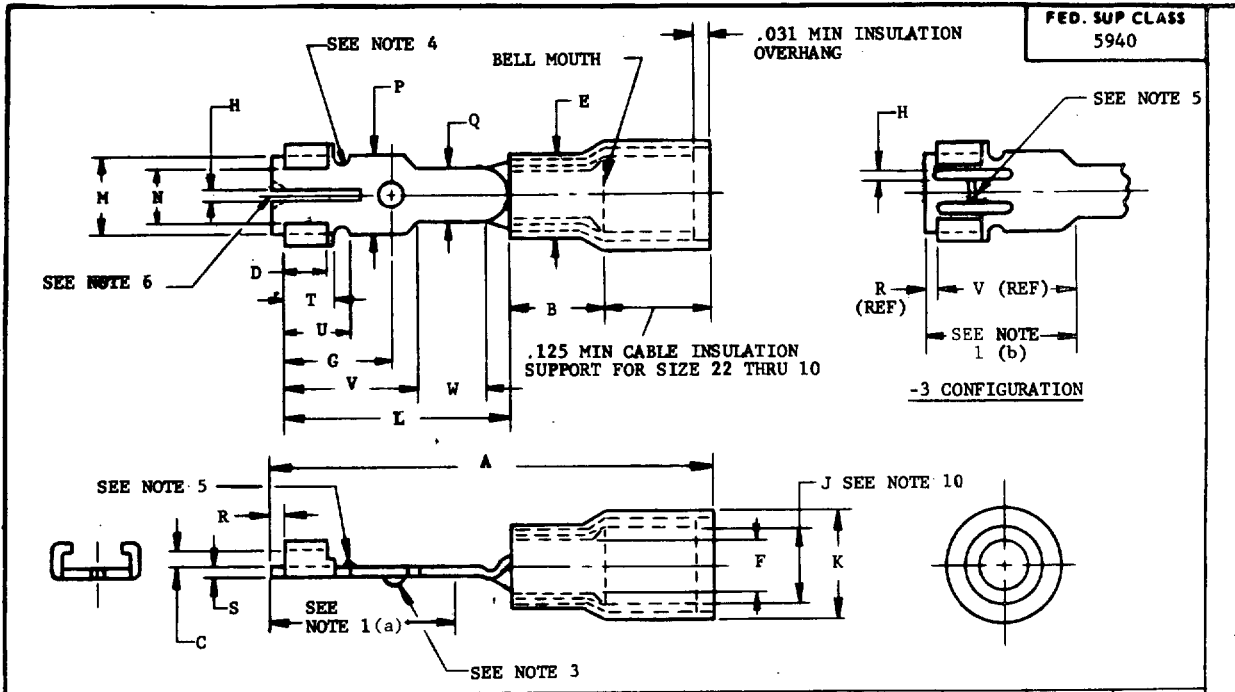
USER SYMBOLS:
NAVY - EC, MC
ARMY - AV

REVIEWER SYMBOLS:
ARMY - SH
NAVY - SH
USAF - 11, 17, 99

"Review/user information is current as of the date of this document. For future coordination of changes to this document, draft circulation should be based on the information in the current DD01SS."

AMSC N/A
DISTRIBUTION STATEMENT A. Approved for public release; distribution is unlimited.

This military standard is approved for use by all Departments & Agencies of the Department of Defense. Selection for all new engineering and design applications and for repetitive use shall be made from this document.



DASH NO.	WIRE SIZE	A MAX	B MIN	C ±.005	D ±.005	E DIA	F DIA	G ±.020	H ±.005	J MIN DIA	K MAX	L +.000 - .070	M ±.005	N +.020 - .000
-1	22 20 18	1.00	.156	.040	.100	.215 .190	.062 .056	.275	.016	.120	.280	.540	.182	.128
-2	16 14					.240 .210	.090 .081			.153				
-3	12 10	1.30	.234	.050	.160	.300 .275	.135 .129	.475	.050	.210	.361	.760	.320	.215

P ±.004	Q +.005 - .010	R ±.015	S		T ±.005	U ±.020	V ±.020	W MIN	BARREL COLOR
			MAX	MIN					
.186	.122	.025	.035	.029	.131	.171	.334	.130	RED
.315	.210	.025	.043	.037	.220	.270	.480	.200	BLUE
									YELLOW

SEE SHEET 2 FOR NOTES

FOR DESIGN FEATURE PURPOSES, THIS STANDARD TAKES PRECEDENCE OVER ACQUISITION DOCUMENTS REFERENCED HEREIN.
REFERENCED DOCUMENTS SHALL BE OF THE ISSUE IN EFFECT ON DATE OF INVITATIONS FOR BID.

(F) Denotes change

P.A. NAVY - AS Other Cust ARMY - ER USAF - 85	TITLE	MILITARY STANDARD
	SPLICE, CONDUCTOR, DISCONNECT, CRIMP STYLE, COPPER, INSULATED BARREL, TYPE II, CLASS 1 FOR 105°C TOTAL CONDUCTOR TEMPERATURE	MS27429
ACQUISITION SPECIFICATION MIL-T-7928	SUPERSEDES: AF DWG 62B47000, MS 27429 (USAF)	SHEET 1 OF 2

APPROVED 31 MAR 66 REVISED (D) 21 Sep 72 (E) 15 July 82 (F) 14 Nov 86

FED. SUP CLASS
5940

NOTES:

1. MATERIAL
 - (a) FOR MS27429-1 AND MS27429-2:
ASTM-B-36-66 52T ALLOY NO. 230, DISCONNECT PORTION HARD TEMPER ROCKWELL B65 MINIMUM, OR
ASTM-B-152-66, DISCONNECT PORTION HARD TEMPER, ROCKWELL F92 MINIMUM.
 - (b) FOR MS27429-3:
ASTM-B-152-66 DISCONNECT PORTION HARD TEMPER, ROCKWELL F92 MINIMUM.
 - (c) INSULATION SLEEVE: THERMOPLASTIC (NYLON OR POLYETHYLENE).
2. FINISH: ELECTRO-TIN, PLATE .0001 INCH MINIMUM-THICKNESS TO MIL-T-10727.
3. INDENT .015 MINIMUM TO PREVENT INCORRECT ASSEMBLING.
4. RELIEF TO ALLOW FLUSH MATING OF SURFACES.
5. UPSET TO ASSIST RETAINING ACTION .002-.012 (BETWEEN MATED SURFACES).
6. "V" CUTOUT OPTIONAL.
7. BREAK ALL SHARP EDGES AND REMOVE ALL BURRS.
8. THESE FITTINGS ARE USED IN PAIRS - WHEN MATING ANY TWO FITTINGS MUST FORM A TIGHT SECURE SPLICE.
9. QUALIFICATION: FOR QUALIFICATION; SPLICES (MATED) SHALL BE TESTED WITH ANY ONE OF THE FOLLOWING WIRES: MIL-W-5086, MIL-W-16878 EXCEPT /8, /9 OR /10, MIL-W-22759/1, /9 OR /11 OR MIL-W-81381/1, /3 OR /7 AND TOOLING AS FOLLOWS: MIL-C-22520/5-01 TOOLING WITH MIL-C-22520/5-100 DIES INSTALLED FOR SIZES 22 THROUGH 10 SPLICES; OR MIL-C-22520/10-01 TOOLING WITH MIL-C-22520/10-101 DIES INSTALLED FOR SIZES 22 THROUGH 14 SPLICES AND MIL-C-22520/10-100 DIES INSTALLED FOR SIZES 12 THROUGH 10 SPLICES. EXISTING MS90413 AND MS3316 TOOLS IN THE FIELD MAY BE USED UNTIL WORN OUT.
10. DIMENSION "J" REPRESENTS THE MINIMUM OPENING THAT WILL ACCEPT THE FINISHED WIRE.
11. CONTOUR INDICATED BY PHANTOM LINES MAY VARY FROM THAT SHOWN TO SUIT INDIVIDUAL MANUFACTURER'S DESIGN.
12. INSULATION SUPPORT AND TERMINAL BARREL MAY BE MULTIPLE PIECE CONSTRUCTION.
13. WIRE INSERTION SHALL BE FACILITATED BY BELL MOUTH.
14. THE GOVERNMENT HAS A ROYALTY-FREE LICENSE UNDER U. S. PATENT NO. 3,516,043 DATED JUNE 2, 1970, ENTITLED "HERMAPHRODITIC DISCONNECT TERMINAL" FOR THE BENEFIT OF MANUFACTURE OF THE ITEMS ILLUSTRATED HEREIN EITHER FOR THE GOVERNMENT OR FOR USE IN EQUIPMENT TO BE DELIVERED TO THE GOVERNMENT.

INCHES	mm	INCHES	mm	INCHES	mm
.002	0.05	.081	2.06	.210	5.33
.004	0.10	.090	2.29	.215	5.46
.005	0.13	.100	2.54	.220	5.59
.010	0.25	.120	3.05	.234	5.94
.012	0.30	.122	3.10	.240	6.10
.015	0.38	.125	3.18	.270	6.86
.016	0.41	.128	3.25	.275	6.99
.020	0.51	.129	3.28	.280	7.11
.025	0.64	.130	3.30	.300	7.62
.029	0.74	.131	3.33	.315	8.00
.031	0.79	.135	3.43	.320	8.13
.035	0.89	.153	3.89	.334	8.48
.037	0.94	.156	3.96	.361	9.17
.040	1.02	.160	4.06	.475	12.07
.043	1.09	.171	4.34	.480	12.19
.050	1.27	.182	4.62	.540	13.72
.056	1.42	.186	4.72	.760	19.30
.062	1.57	.190	4.83	1.000	25.40
.070	1.78	.200	5.08	1.300	33.02

DD FORM 1000
NAVY - EC, MC
ARMY - AV

REVISED 31 MAR 66
ARMY - SH
USAF - 11, 17, 99

"Revision/issue information is current as of the date of this document. For future coordination of changes to this document, draft circulation should be based on the information in the current 000199."

This military standard is approved for use by all Departments & Agencies of the Department of Defense. Selection for all new engineering and design applications and for repetitive use shall be made from this document.

APPROVED 31 MAR 66 REVISED (E) FOR CHANGES SEE SHEET 1 AND 2

P.A. NAVY - AS Other Cust ARMY - ER USAF - 85	TITLE SPLICE, CONDUCTOR, DISCONNECT, CRIMP STYLE, COPPER, INSULATED BARREL, TYPE II CLASS 1 FOR 105°C TOTAL CONDUCTOR TEMPERATURE	MILITARY STANDARD	
		MS27429	
ACQUISITION SPECIFICATION MIL-T-7928	SUPERSEDES: AF DWG 62B47000, MS 27429 (USAF)	SHEET 2	OF 2