

INCH-POUND

MS27409E

w/AMENDMENT 1

19 July 2011

SUPERSEDING

MS27409E

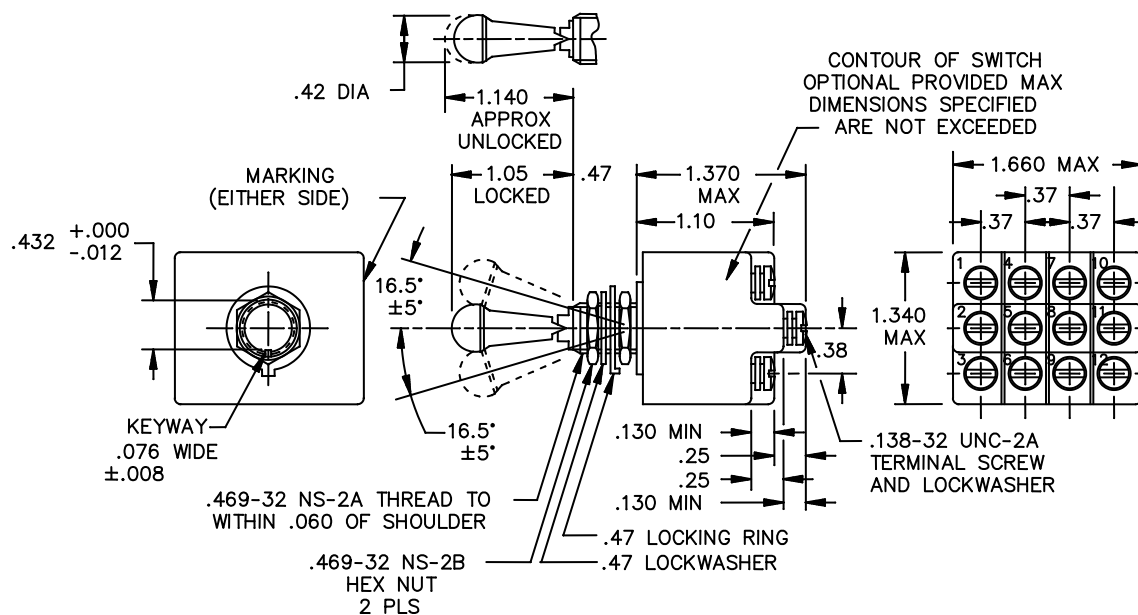
18 April 2011

DETAIL SPECIFICATION SHEET

SWITCH, TOGGLE, FOUR POLE, ENVIRONMENTALLY SEALED, LEVER LOCK

This specification is approved for use by all Departments and Agencies of the Department of Defense.

The complete requirements for acquiring the switch described herein shall consist of this specification and the latest issue of MIL-DTL-3950.

FIGURE1. Dimensions and configuration

MS27409E
w/AMENDMENT 1

Inches	mm	Inches	mm	Inches	mm	Inches	mm
.005	0.13	.060	1.52	.38	9.7	1.05	26.7
.008	0.20	.076	1.93	.42	10.7	1.10	27.9
.012	0.30	.130	3.30	.432	10.97	1.140	28.96
.020	0.51	.25	6.4	.47	11.9	1.340	34.04

NOTES:

1. Dimensions are inches.
2. Metric equivalents are given for general information only.
3. Unless otherwise specified, tolerance is $\pm .020$ (0.51 mm) for two place decimals and $\pm .005$ (0.13 mm) for three place decimals.
4. For hardware and terminal screw detail specifications, see appendix of MIL-DTL-3950.
5. In event of a conflict between the text of this standard and the reference cited herein, the text of this standard shall take precedence.

FIGURE1. Dimensions and configuration - Continued

REQUIREMENTS

All switches on this standard are designed so that the movement of the switch mechanism is opposite to that of the toggle lever.

Locking arrangement Positive locking shall be accomplished and shall prevent motion of the toggle lever until the locking mechanism is manually released.

The force required to release the locking mechanism shall be 3 to 5 pounds.

The locking means at the top of the toggle bushing shall be capable of withstanding a torque of 20 inch-pounds applied in both directions immediately following the humidity test.

Part number example MS27409-21A (locking combination 'A').

Maximum weight is 0.20 pound.

Electrical rating: See table I.

MS27409E
w/AMENDMENT 1

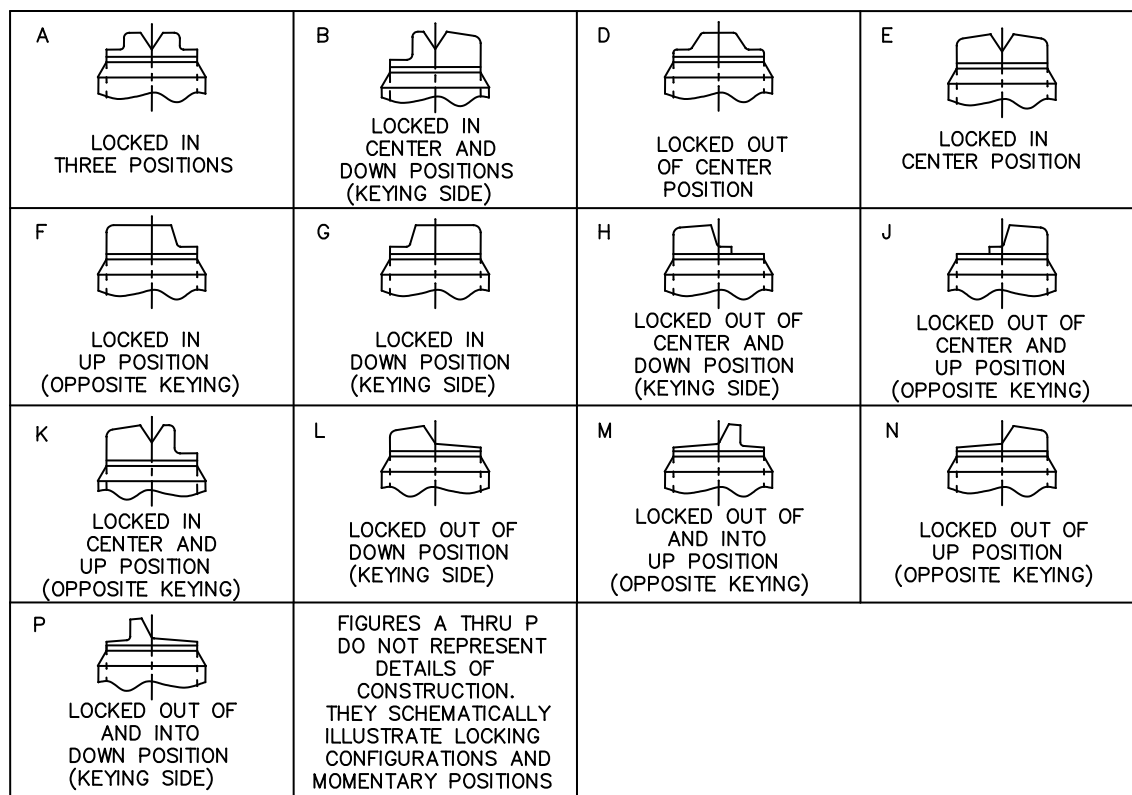


FIGURE 2. Locking Combinations.

TABLE I Detail Requirements.

MS part No.	Available locking combinations	Circuit with Toggle Lever In			Current capacity (amperes) 28 volts DC			Current capacity(amperes) 115 volts, 60 and 400 Hertz AC		
		Keying side	Center	Opposite keying side	Lamp-Load circuit	Resistive circuit	Inductive circuit	Lamp-Load circuit	Resistive circuit	Inductive circuit
MS27409-1	All	1-2 4-5 7-8 On 10-11	2-3 4-5 7-8 On 11-12	2-3 5-6 8-9 On 11-12	5	20	12	4	15	15
MS27409-2	E,F,K,L,M,N	1-2 Mom. 4-5 7-8 On 10-11	2-3 4-5 7-8 On 11-12	2-3 5-6 8-9 On 11-12	4	18	10	2	11	8
MS27409-3	E,L,N	1-2 Mom 4-5 7-8 On 10-11	2-3 4-5 7-8 On 11-12	2-3 Mom 5-6 8-9 On 11-12						

MS27409E
w/AMENDMENT 1

Referenced documents
MIL-DTL-3950

The margins of this specification are marked with vertical lines to indicate where modifications from this amendment were made. This was done as a convenience only and the Government assumes no liability whatsoever for any inaccuracies in these notations. Bidders and contractors are cautioned to evaluate the requirements of this document based on the entire content irrespective of the marginal notations.

Custodians:
Army – CR
Navy – AS
Air Force – 85
DLA – CC

Preparing activity
DLA – CC

(Project 5930-2011-099)

Review activities
Army – AR, AV, MI
Navy – EC, MC
Air Force – 99

NOTE: The activities listed above were interested in this document as of the date of this document. Since organizations and responsibilities can change, you should verify the currency of the information above using the ASSIST Online database at <https://assist.daps.dla.mil/>.