

INCH-POUND

MS27405B  
 5 August 2008  
 SUPERSEDING  
 MS27405A  
 23 December 1971

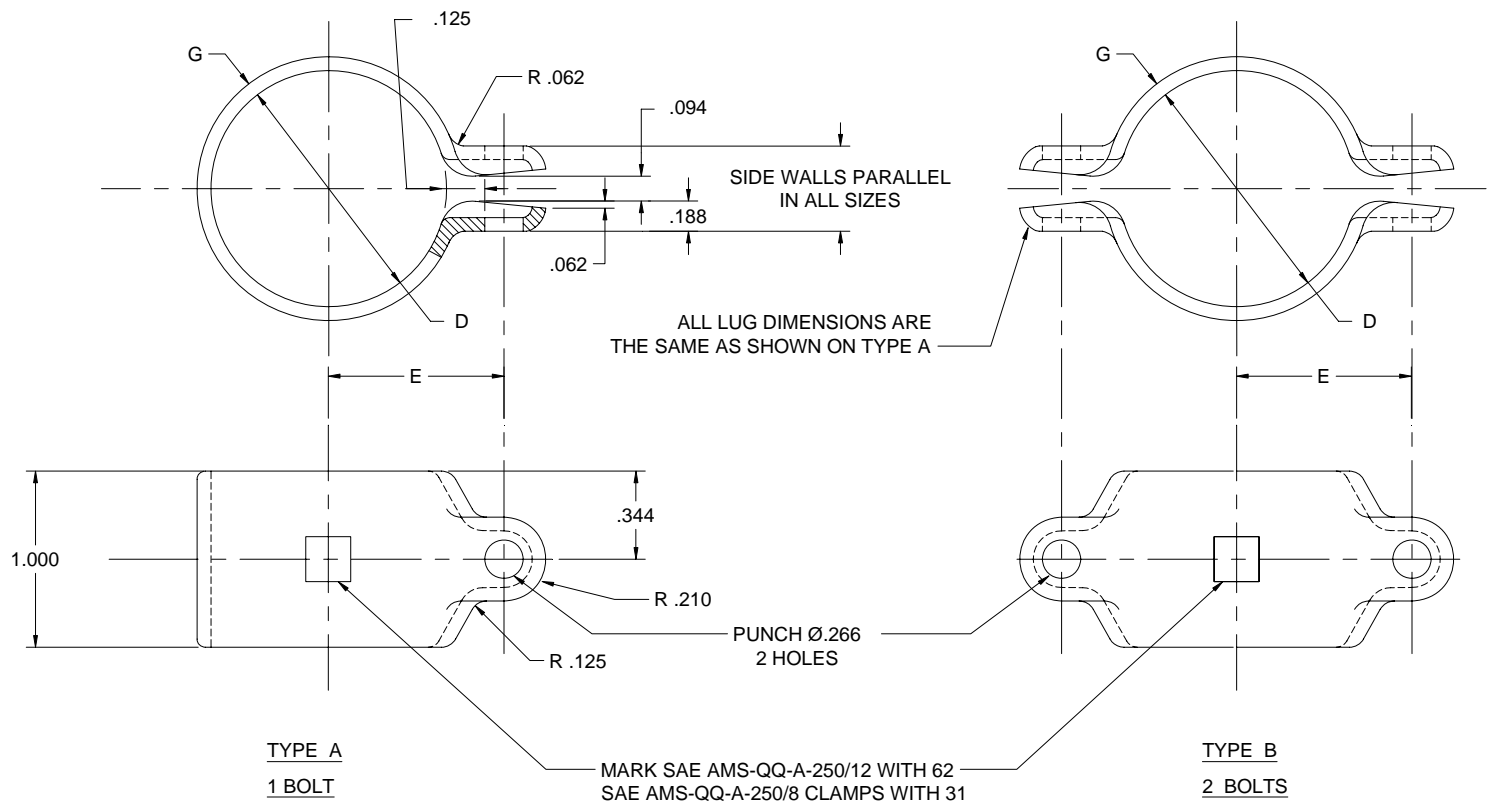
## DETAIL SPECIFICATION SHEET

## CLAMP – TUBE

Inactive for new design after 22 August 1997

This specification sheet is approved for use by all Departments and Agencies of the Department of Defense.

The requirements for acquiring the product described herein shall consist of this specification sheet.

FIGURE 1. Clamp – Tube.

## MS27405B

TABLE I. Type A Part numbers and dimensions

MS PART NUMBER				DIMENSIONS			
TYPE A				ØD	E	G	
STEEL		ALUMINUM ALLOY				STEE L	ALUM ALLOY
UNPLATED	PLATED	SAE AMS-QQ-A-250/12	SAE AMS-QQ-A-250/8				
MS27405 4	MS27405 4P	MS27405 D4	MS27405 HD4	.500	.453	.050	.051
MS27405 5	MS27405 5P	MS27405 D5	MS27405 HD5	.625	.562		
MS27405 6	MS27405 6P	MS27405 D6	MS27405 HD6	.750	.641		
MS27405 7	MS27405 7P	MS27405 D7	MS27405 HD7	.875	.719		
MS27405 8	MS27405 8P	MS27405 D8	MS27405 HD8	1.000	.781		
MS27405 9	MS27405 9P	MS27405 D9	MS27405 HD9	1.125	.859		
MS27405 10	MS27405 10P	MS27405 D10	MS27405 HD10	1.250	.922		
MS27405 11	MS27405 11P	MS27405 D11	MS27405 HD11	1.375	1.000		
MS27405 12	MS27405 12P	MS27405 D12	MS27405 HD12	1.500	1.062		
MS27405 13	MS27405 13P	MS27405 D13	MS27405 HD13	1.625	1.125		
MS27405 14	MS27405 14P	MS27405 D14	MS27405 HD14	1.750	1.188		
MS27405 15	MS27405 15P	MS27405 D15	MS27405 HD15	1.875	1.250		
MS27405 16	MS27405 16P	MS27405 D16	MS27405 HD16	2.000	1.328		
MS27405 17	MS27405 17P	MS27405 D17	MS27405 HD17	2.125	1.391		
MS27405 18	MS27405 18P	MS27405 D18	MS27405 HD18	2.250	1.453		
MS27405 19	MS27405 19P	MS27405 D19	MS27405 HD19	2.375	1.516		
MS27405 20	MS27405 20P	MS27405 D20	MS27405 HD20	2.500	1.578		

TABLE II. Type B Part numbers and dimensions

MS PART NUMBER				DIMENSIONS			
TYPE B				ØD	E	G	
STEEL		ALUMINUM ALLOY				STEE L	ALUM ALLOY
UNPLATED	PLATED	SAE AMS-QQ-A-250/12	SAE AMS-QQ-A-250/8				
MS27405 T4	MS27405 T4P	MS27405 TD4	MS27405 HTD4	.500	.453	.050	.051
MS27405 T5	MS27405 T5P	MS27405 TD5	MS27405 HTD5	.625	.562		
MS27405 T6	MS27405 T6P	MS27405 TD6	MS27405 HTD6	.750	.641		
MS27405 T7	MS27405 T7P	MS27405 TD7	MS27405 HTD7	.875	.719		
MS27405 T8	MS27405 T8P	MS27405 TD8	MS27405 HTD8	1.000	.781		
MS27405 T9	MS27405 T9P	MS27405 TD9	MS27405 HTD9	1.125	.859		
MS27405 T10	MS27405 T10P	MS27405 TD10	MS27405 HTD10	1.250	.922		
MS27405 T11	MS27405 T11P	MS27405 TD11	MS27405 HTD11	1.375	1.000		
MS27405 T12	MS27405 T12P	MS27405 TD12	MS27405 HTD12	1.500	1.062		
MS27405 T13	MS27405 T13P	MS27405 TD13	MS27405 HTD13	1.625	1.125		
MS27405 T14	MS27405 T14P	MS27405 TD14	MS27405 HTD14	1.750	1.188		
MS27405 T15	MS27405 T15P	MS27405 TD15	MS27405 HTD15	1.875	1.250		
MS27405 T16	MS27405 T16P	MS27405 TD16	MS27405 HTD16	2.000	1.328		
MS27405 T17	MS27405 T17P	MS27405 TD17	MS27405 HTD17	2.125	1.391		
MS27405 T18	MS27405 T18P	MS27405 TD18	MS27405 HTD18	2.250	1.453		
MS27405 T19	MS27405 T19P	MS27405 TD19	MS27405 HTD19	2.375	1.516		
MS27405 T20	MS27405 T20P	MS27405 TD20	MS27405 HTD20	2.500	1.578		

## MS27405B

## NOTES:

1. MATERIAL: ALUMINUM ALLOY, SPEC SAE AMS-QQ-A-250/12 (7075) T73 TEMPER, TENSILE STRENGTH REQUIREMENTS OF 62,000 PSI MIN  
ALUMINUM ALLOY, SPEC SAE AMS-QQ-A-250/8 H32 TENSILE STRENGTH REQUIREMENTS OF 31,000 PSI MIN  
STEEL, SPEC QQ-S-698 1015, T4
2. FINISH: ALUMINUM ALLOY, ANODIZE PER SPEC MIL-A-8625, TYPE I OR II.  
STEEL, CADMIUM PLATE PER SPEC SAE AMS-QQ-P-416, TYPE II, CLASS 2.
3. EXAMPLE PART NUMBER: MS27405 6 CLAMP, TYPE A, STEEL, UNPLATED.  

MS27405 6P	CLAMP, TYPE A, STEEL, PLATED.
MS27405 D6	CLAMP, TYPE A, ALUMINUM ALLOY, SPEC SAE AMS-QQ-A-250/12.
MS27405 T6	CLAMP, TYPE B, STEEL, UNPLATED.
MS27405 T6P	CLAMP, TYPE B, STEEL, PLATED.
MS27405 HD6	CLAMP, TYPE A, ALUMINUM ALLOY, SPEC SAE AMS-QQ-A-250/8.
MS27405 TD6	CLAMP, TYPE B, ALUMINUM ALLOY, SPEC SAE AMS-QQ-A-250/12.
MS27405 HTD6	CLAMP, TYPE B, ALUMINUM ALLOY, SPEC SAE AMS-QQ-A-250/8.
4. MARK BOTH HALVES OF TYPE B CLAMP.
5. DIMENSION IN INCHES, TOLERANCES  $\pm 0.010$ .
6. MS27405 ITEMS ARE UNIVERSALLY INTERCHANGEABLE WITH AN741 ITEMS OF LIKE DASH NUMBERS.
7. CHANGES FROM PREVIOUS ISSUE. MARGINAL NOTATIONS ARE NOT USED IN THIS REVISION TO IDENTIFY CHANGES WITH RESPECT TO THE PREVIOUS ISSUE DUE TO THE EXTENT OF CHANGES.

Custodians:  
 Army - AV  
 Navy - AS  
 Air Force - 99

Preparing activity:  
 DLA – IS  
 (Project 5340-2008-006)

NOTE: The activities listed above were interested in this document as of the date of this document. Since organizations and responsibilities can change, you should verify the currency of the information above using the ASSIST Online database at <http://assist.daps.dla.mil>