

INCH-POUND

MS27399A
 22 March 2005
 SUPERSEDING
 MS27399 (USAF)
 15 June 1965

DETAIL SPECIFICATION SHEET

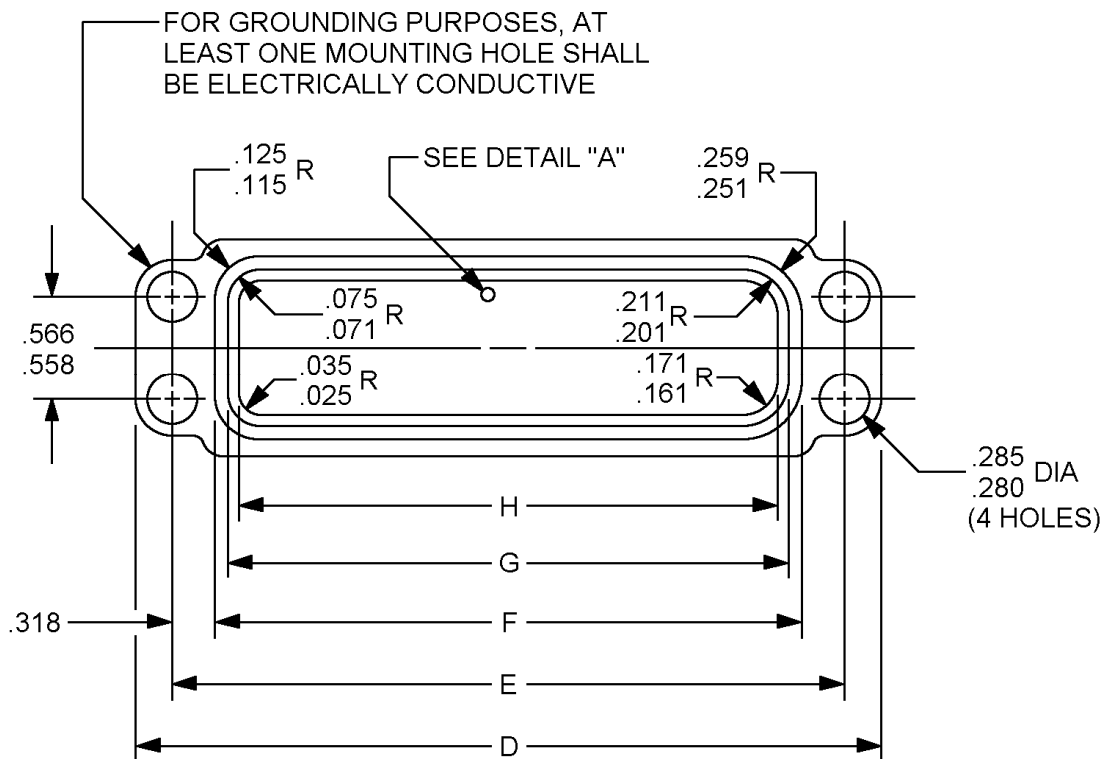
CONNECTOR, ELECTRICAL, STYLE S,
 RACK AND PANEL, MINIATURE, CLOSED ENTRY

Inactive for new design after 8 June 1999. For
 new design use MIL-DTL-83733.

This specification is approved for use by all Departments and Agencies of the Department of Defense.

The requirements for acquiring the product described herein shall consist of this specification sheet and MIL-DTL-26518.

The Qualified Products List (QPL) associated with this inactive for new design specification will be maintained until acquisition of the product is no longer required, where upon the specification and QPL will be canceled.



Style S (socket insert)

Environment Resistant (R) Plugs

FIGURE 1. Connector dimensions and configurations.

MS27399A

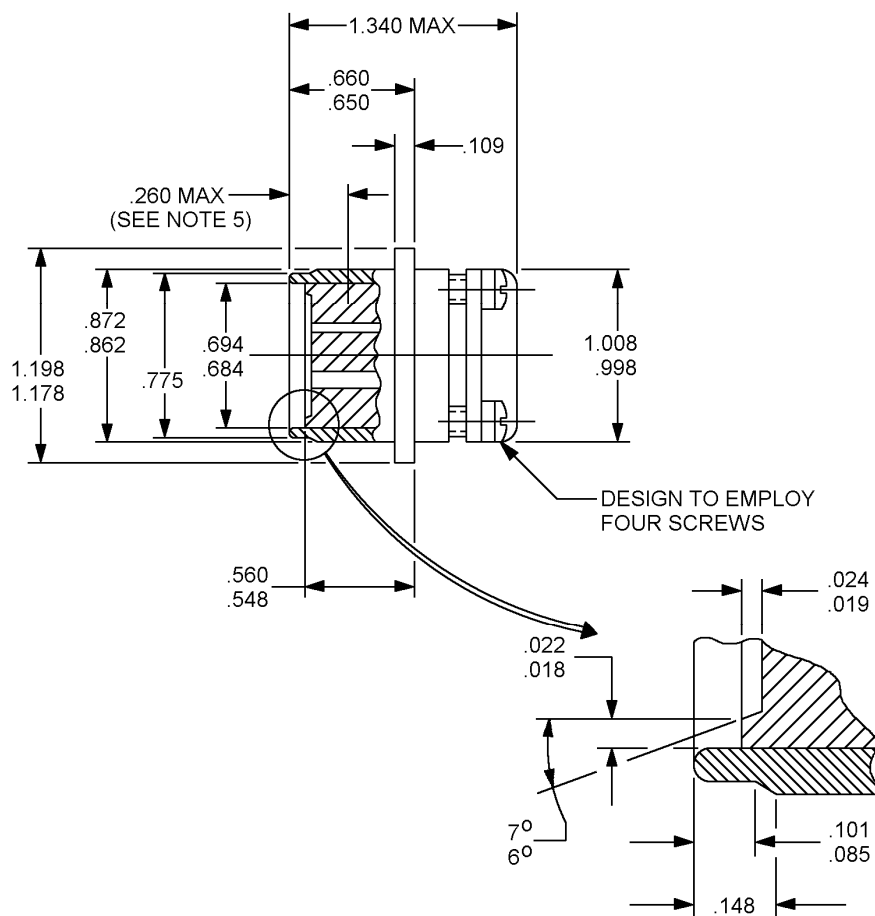
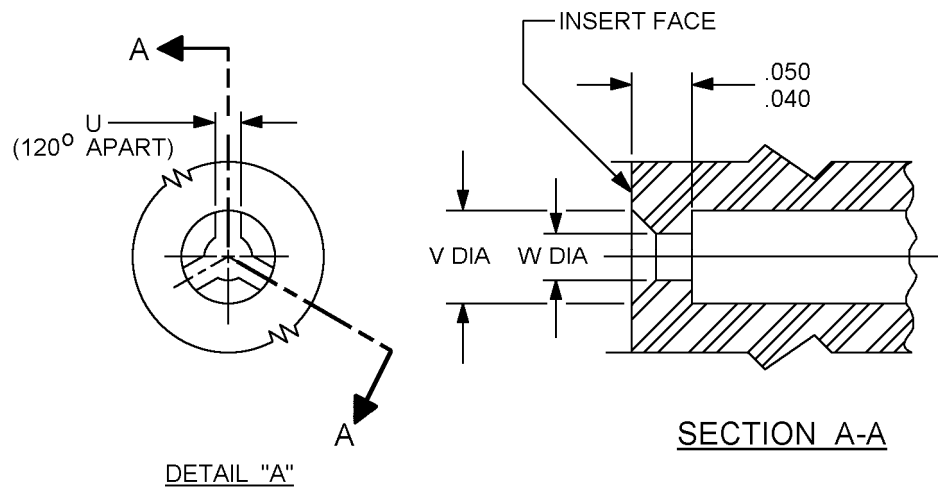


FIGURE 1. Connector dimensions and configurations - Continued.

MS27399A

Shell size	D ±.005	E ±.004	F ±.005	G	H ±.005
A	4.296	3.875	3.239	3.147	3.061
B	2.866	2.445	1.809	1.717	1.631
C	2.421	2.000	1.380	1.288	1.202

Contact pocket dimensions														
Dimension	Contact size													
	20		16		12		8		4		Shielded			
											No. 1		No. 2	
	min	max	min	max	min	max	min	max	min	max	min	max	min	max
U	.017	.020	.028	.031	.034	.038	.040	.044	.040	.044	.034	.038	.040	.044
V	.110	.113	.145	.148	.192	.196	.283	.287	.368	.372	.192	.196	.283	.287
W	.048	.062	.082	.086	.129	.133	.224	.228	.308	.312	.129	.133	.224	.228

Inches	mm	Inches	mm	Inches	mm	Inches	mm
.017	0.43	.085	2.16	.259	6.58	.872	22.15
.018	0.46	.086	2.18	.260	6.60	.998	25.35
.019	0.48	.101	2.57	.280	7.11	1.008	25.60
.020	0.51	.109	2.77	.283	7.19	1.178	29.92
.022	0.56	.110	2.79	.285	7.24	1.198	30.43
.024	0.61	.113	2.87	.287	7.29	1.202	30.53
.025	0.64	.125	3.18	.308	7.82	1.288	32.72
.028	0.71	.129	3.28	.312	7.92	1.340	34.04
.031	0.79	.133	3.38	.318	8.08	1.380	35.05
.034	0.86	.145	3.68	.368	9.35	1.631	41.43
.035	0.89	.148	3.76	.372	9.45	1.717	43.61
.038	0.97	.161	4.09	.548	13.92	1.809	45.95
.040	1.02	.171	4.34	.558	14.17	2.000	50.80
.044	1.12	.192	4.88	.566	14.38	2.421	61.49
.048	1.22	.196	4.99	.650	16.51	2.445	62.10
.050	1.27	.201	5.11	.660	16.76	2.866	72.80
.062	1.57	.211	5.36	.684	17.37	3.061	77.75
.071	1.80	.224	5.69	.694	17.63	3.147	79.93
.075	1.91	.228	5.79	.775	19.69	3.239	82.27
.082	2.08	.251	6.38	.862	21.89	3.875	98.43
						4.296	109.12

NOTES:

1. Dimensions are in inches.
2. Metric equivalents are given for information only.
3. Unless otherwise specified tolerances are ±.003 inch (0.08 mm).
4. For insert arrangements see MS24288.
5. Distance between end of shell and point at which a gage pin, having the same basic diameter as the mating contact and a square face, engages the socket contact spring.

FIGURE 1. Connector dimensions and configurations - Continued.

MS27399A

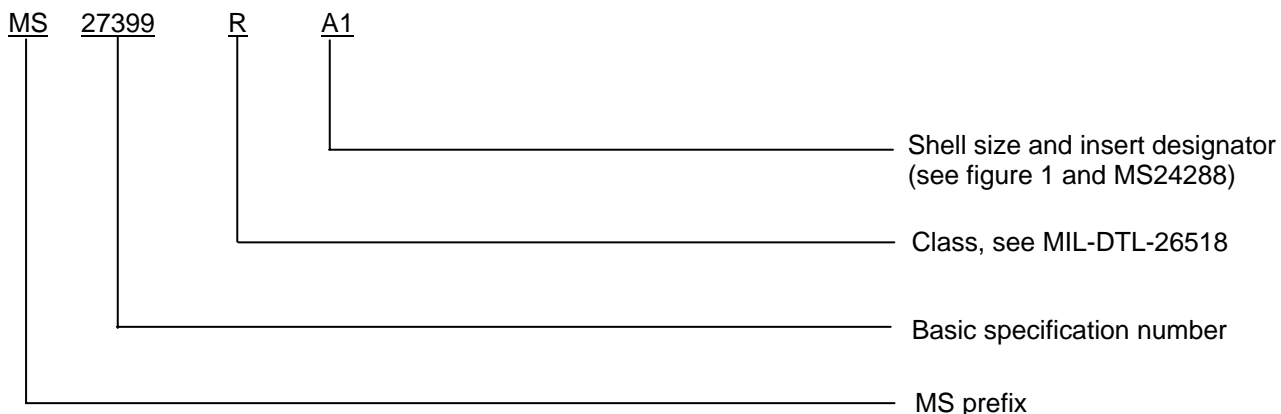
REQUIREMENTS:

Dimensions and configuration: See figure 1.

Materials shall be in accordance with MIL-DTL-26518.

For mating and mounting details see MS24287 and MS24288.

Part or Identifying Number (PIN): See the following example:



Referenced documents. In addition to MIL-DTL-26518, this document references the following:

MS24287
MS24288

Changes from previous issue. Marginal notations are not used in this revision to identify changes with respect to the previous issue due to the extent of the changes.

CONCLUDING MATERIAL

Custodians:
Air Force - 11
DLA - CC

Reviewer:
DLA - IS

Preparing activity:
DLA - CC
(Project 5935-4767-000)

NOTE: The activities listed above were interested in this document as of the date of this document. Since organizations and responsibilities can change, you should verify the currency of the information above using the ASSIST Online database at <http://assist.daps.dla.mil>.