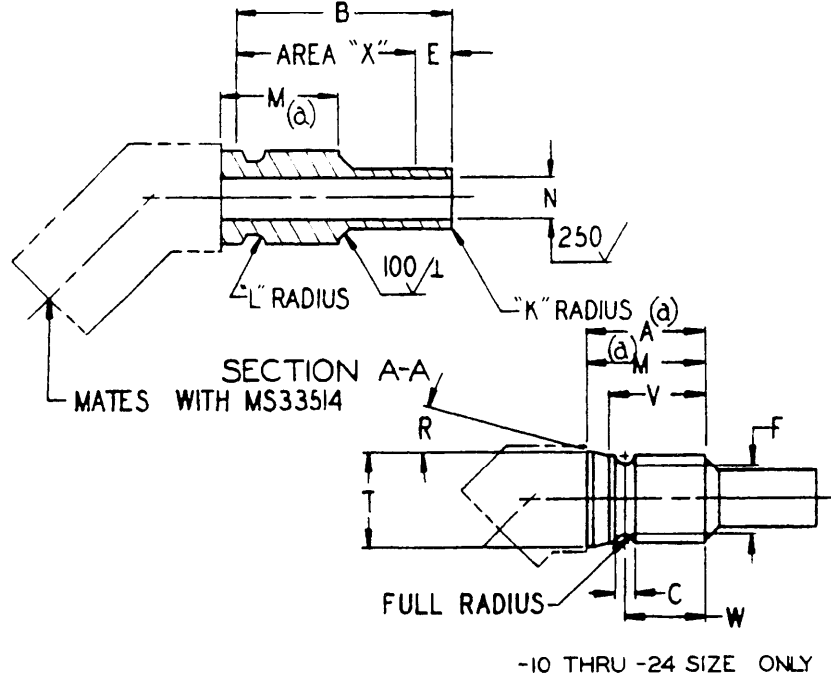
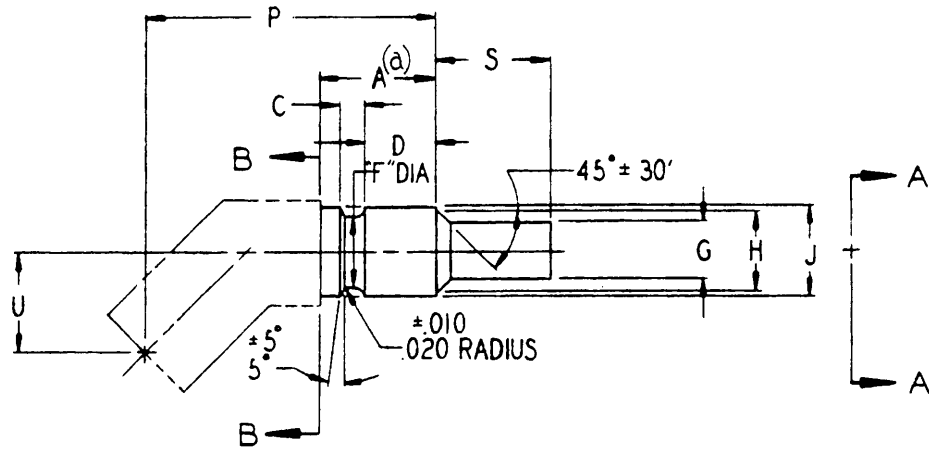


FFD SUP CLASS
4730

Review Activities: AV
Army-AS
Navy-AS
Air Force-82

User Activities: WC, MC, MI
Army-WC, MC, MI

This military standard is approved by the Department of Defense and is mandatory on all activities. Section for all new engineering and design applications and for repairs. Use shall be made from this document.



-10 THRU -24 SIZE ONLY

APPROVED 2 May 66 REVISED (A) 30 Jun 72

Note: The Government has a royalty free license under the following listed patents for the benefit of Manufacturer of the item for the Government or for use in equipment to be delivered to the Government. (U.S. Patent Nos. 2,833,567; 3,049,163; 3,055,682)

P/A Air Force-II Other Cost Army-AV Navy-AS Procurement Specification MIL-F-27272	TITLE ELBOW, FLARELESS, TUBE TO HOSE - 45° SWIVEL NUT	MILITARY STANDARD
		MS27395
SUPERSEDES		SHEET 1 OF 3

FED SUP CLASS
4730

DASH	NO.	"A" MIN	B MIN	C		D +.005 -.000	E		F		G +.005 -.000
STEEL	ALUM										
-3/4C	---	.515	.870	.106		.307			.288		.205
-4C	---				±.010		.25	±.05	.316		.268
-5C	---	.520	.890	.116		.322			.391	+ .005 - .000	.330
-6C	---	.555							.497		.426
-8C	-8D	.630	1.030	.140	±.020	.335	.32	±.12	.586		.526
-10C	-10D	.654	1.130	.098	+ .004 - .000		.35	±.15	.674		.650
-12C	-12D	.755	1.240							+ .008 - .000	.900
-16C	-16D	.831	1.340	.128	+ .005 - .000		.39	±.19	1.001		1.151
-20C	-20D	.881	1.570				.48	±.28	1.255		1.401
-24C	-24D	1.035	1.720				.50	±.30	1.490	+ .005 - .000	1.401

H ±.005	J +.005 -.000	K		L ±.004	"M" MIN	N			P		"R" MAX
						STEEL	ALUM				
.295	.373	.015	+ .005 - .000	.036	.485	.161	---		1.227		---
.360	.416			.040	.501	.224	---	+ .005 - .000	1.219	±.020	---
.425	.491			.047	.521	.261	---		1.258		---
.530	.616	.020			.583	.345	.345		1.361		---
.625	.706				.620	.440	.440		1.877		---
.760	.826				.720	.560	.560	+ .006 - .000	1.674		15° 30'
1.040	1.150	.030	±.005		.796	.828	.828		2.114	±.035	10° 30'
1.275	1.405				.846	1.058	1.058		2.188		15° 30'
1.550	1.635	.035			1.000	1.253	1.282	±.005 - .000	2.445		---
									2.849		---

S	"T" MAX	U		V		"W" +.005 - .000	
						STEEL	ALUM
.480	±.010		.432	±.020			
			.424				
			.448				
			.526				
			.622				
.600							
.650	±.015		.725			.420	.427
.675		.900	.800	±.035	.625	.500	.500
.730	+.025	1.190	.854		.670	.545	.545
.935		1.485	.962		.695	.565	.571
.980		1.750	1.155		.795	.665	.665

P A Air Force-II Other Govt Army-AV Navy-AS (A)	ELBOW, FLARELESS, TUBE TO HOSE-45° SWIVEL NUT	MILITARY STANDARD
		MS27395
Procurement Specification MIL-F-27272	SUPERSEDES	SHEET 2 OF 3

User Activities: Army-WC, ME, MI
 Review Activities: Army-AV, Navy-AS, Air Force-82

This military standard is prepared by the Department of Defense and is mandatory on all activities. Selection for all new engineering and design applications and for repetitive use shall be made from this document.

APPROVED 2 May 66 REVISED (A) FOR CHANGES SEE SHEETS 1, 2 AND 3.

NOTE: The Government has a royalty free license under the following listed patents for the benefit of Manufacturers of the item either for the Government or for use in equipment to be delivered to the Government. (U.S. Patent Nos. 2,833,567; 3,044,163; 3,055,682)

FED SUP CLASS
4730

Review Activities: Army-AV, Navy-AS, Air Force-82
 User Activities: Army-WC, ME, MI

MATERIAL CORROSION RESISTING STEEL . CLASS 304 OR 321 COLD FIN.
 CONDITION "A" SPECIFICATION QQ-S-763
 ALUMINUM ALLOY : 6061-T6 OR T651
 SPECIFICATION QQ-A-367 OR QQ-A-225/8

FINISH CORROSION RESISTING STEEL ; PASSIVATE PER MIL-F-27272.
 ALUMINUM ALLOY : ANODIZE, SPECIFICATION
 MIL-A-8625 TYPE II, DYE YELLOW.

DRY FILM LUBRICATE AREA "X" IN ACCORDANCE WITH MIL-L-8937, NO
 OVERSPRAY ALLOWED.

(A) DIMENSIONS IN INCHES UNLESS OTHERWISE SPECIFIED : RADIUS OR BREAK
 ALL CORNERS .005 + .005 -.000, REMOVE ALL BURRS AND SLIVERS.
 SURFACE ROUGHNESS PER ANSI B46.1-1962 NOT TO EXCEED 125 AA .
 ALL DIAMETERS WITHIN LENGTH "A" PLUS "S" MUST BE CONCENTRIC
 WITHIN .005 TIR.

THIS STANDARD TAKES PRECEDENCE OVER DOCUMENTS REFERENCED
 HEREIN.

THIS IS A DESIGN STANDARD FOR MANUFACTURING PURPOSES THE ITEM
 IS ONLY PROCURED AS AN INTEGRAL PART OF ADAPTER ASSEMBLIES.

(a) USE "A" DIM. WHEN THE ADJACENT DIA TO THE LEFT OF PLANE
 B-B IS GREATER THAN "J" DIM. WHEN THE ADJACENT DIA IS
 EQUAL TO OR LESS THAN "J" DIM. "M" DIM. MAY BE USED IN
 PLACE OF "A" DIM.

THE BORE OF THE ELBOW, -10 THRU -24 SIZE, SHALL NOT BE LESS THAN THE ID
 OF THE NIPPLE. OVALITY SHALL NOT EXCEED 7.5 PERCENT OF NOMINAL TUBING OD.

ANY DESIGN OF THE ELBOW TO THE LEFT OF PLANE B-B IS ACCEPTABLE
 PROVIDED DIM'S "P" AND "U" THE MATERIALS SPECIFIED AND THE FABRICATION
 NOTES OF THIS STANDARD ARE MET.

(A) ANY FORGED DESIGN IS ACCEPTABLE FOR 3/4 THRU 8 SIZE, ANY BENT TUBE
 DESIGN IS ACCEPTABLE FOR -10 THRU -24 SIZE.

(A) NEXT ASSEMBLY MS27389-3/4 THRU -8 SIZE
 AND NS27387-10 THRU -24 SIZE.

This military standard is approved by the Department of Defense and is mandatory on all
 activities. Selection for all new engineering and design applications and for repetitive
 use shall be made from this document.

APPROVED 2 May 66 REVISED (A) FOR CHANGES SEE SHEETS 1, 2 AND 3

NOTE: The Government has a royalty free license under the following listed patents for the benefit of Manufacturers of the item either
 for the Government or for use in equipment to be delivered to the Government. (U.S. Patent Nos.: 2,833,567; 3,044,163; 3,055,682)

P, A Air Force-11 Other Cust Army-AV Navy-AS (A)	TITLE	MILITARY STANDARD
	ELBOW, FLARELESS, TUBE TO HOSE - 45° SWIVEL NUT	MS27395
Procurement Specification MIL-F-27272	SUPERSEDES	SHEET 3 OF 3

