

INCH-POUND

MS27342E
 12 July 2002
 SUPERSEDING
 MS27342D
 2 January 1976

DETAIL SPECIFICATION SHEET

CONNECTORS, ADAPTER, ELECTRICAL, SERIES I AND II

This specification is approved for use by all Departments
 and Agencies of the Department of Defense.

The requirements for acquiring the product described herein
 shall consist of this specification and MIL-DTL-38999.

Inactive for new design.

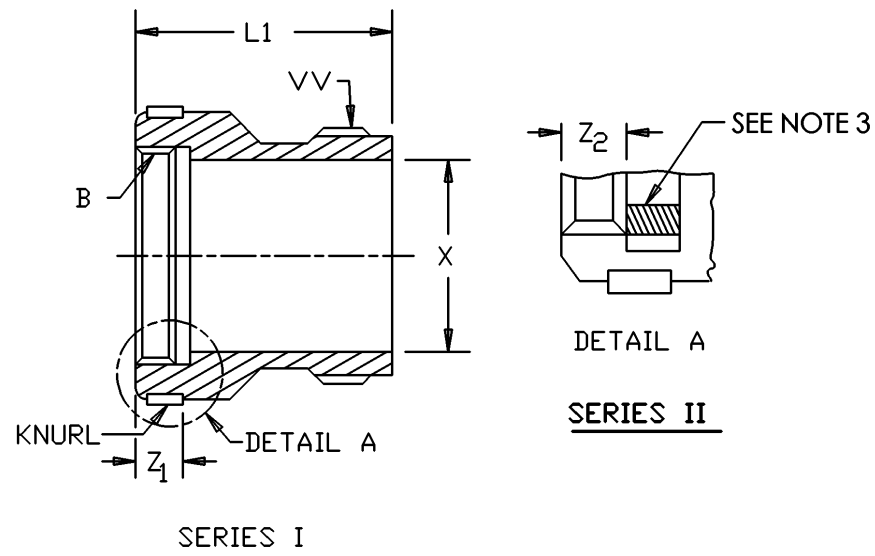


FIGURE 1. Open adapter (-1).

MS27342E

Shell size series I	Shell size series II	B Thread class 2B UNEF	L ₁ max	X dia min	Z ₁ +.000, -.015 series I	Z ₂ +.005, -.010 series II	V V Thread class 2A UNEF
9	8	7/16-28	.688	.281	.219	.114	1/2-28
11	10	9/16-24		.406			5/8-24
13	12	11/16-24		.531			3/4-20
15	14	13/16-20		.656			7/8-20
17	16	15/16-20		.781			1-20
19	18	1 1/16-18		.875			1 3/16-18
21	20	1 3/16-18	.750	1.000			1 7/16-18
23	22	1 5/16-18		1.125			
25	24	1 7/16-18		1.250			

NOTES:

1. Dimensions are in inches.
2. Materials: Adapter body: aluminum alloy.
3. On series II adapters, the Z₂ dimension may be achieved by two-piece construction.

FIGURE 1. Open adapter (-1) - Continued.

MS27342E

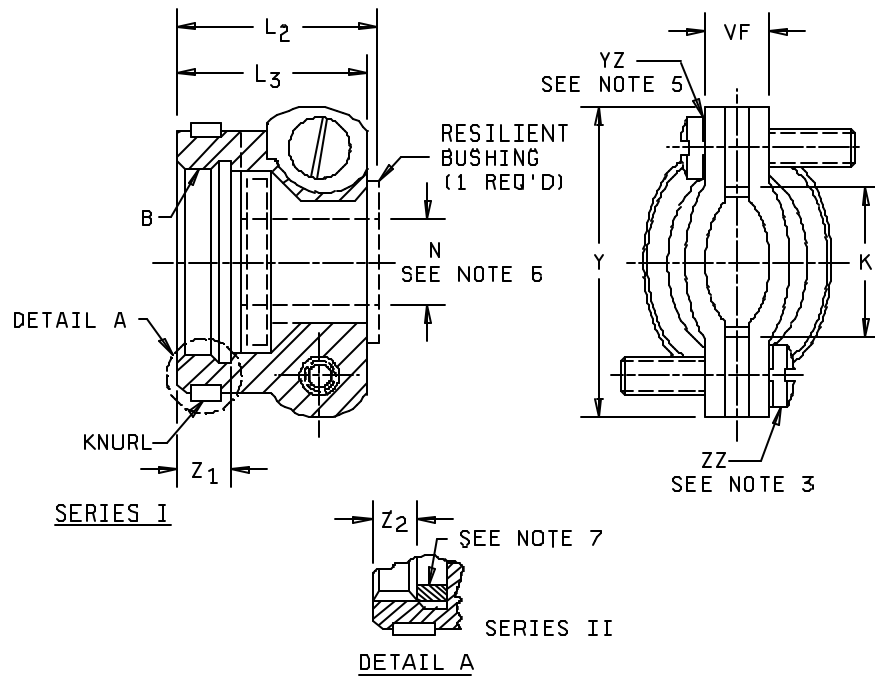


FIGURE 2. Strain relief adapter (-2).

MS27342E

Shell size series I	Shell size series II	B Thread class 2B UNEF	N free dia +.010 -.025	L ₂ max	L ₃ max	X dia min open	Y max
9	8	7/16-28	.125	.875	.781	.234	.628
11	10	9/16-24	.188			.297	.981
13	12	11/16-24	.312			.422	1.016
15	14	13/16-20	.375	.938	.844	.547	1.141
17	16	15/16-20	.500			.609	1.203
19	18	11/16-18	.625			.734	1.469
21	20	13/16-18	.750	1.000	.906	.922	1.656
23	22	15/16-18				.964	1.750
25	24	17/16-18	.800				

Shell size series I	Shell size series II	Z ₁ +.000, -.015 Series I	Z ₂ +.005, -.010 Series II	VF max closed	ZZ Screws MS35271 see note 3	YZ Lockwashers see note 5
9	8	.219	.114	.187	-30	MS35338-98 or MS35338-41
11	10					
13	12			.261		
15	14			.325	-32	AN936-A6B or AN936-A6
17	16			.356		
19	18			.456		
21	20			.519	-50	MS35338-99 or MS35338-42
23	22					
25	24			.657		
					see note 4	AN936-A8

NOTES:

1. Dimensions are in inches
2. Materials: Adapter body and clamping bars: Aluminum alloy. Resilient bushing: Silicone.
3. Drill hole in head is optional.
4. Except that length of screw under head shall be 1.125 +.000 -.062.
5. Lockwashers may be captivated.
6. Use MS3420 bushing if reduced opening is required.
7. On series II adapters, the Z₂ dimension may be achieved by two-piece construction.

FIGURE 2. Strain Relief Adapter (-2) - Continued.

MS27342E

REQUIREMENTS:

Dimensions and configuration: See figures 1 and 2.
 Interface dimensions shall conform to MIL-DTL-38999.
 Mating connectors: MIL-DTL-38999 series I and series II.

Qualification:

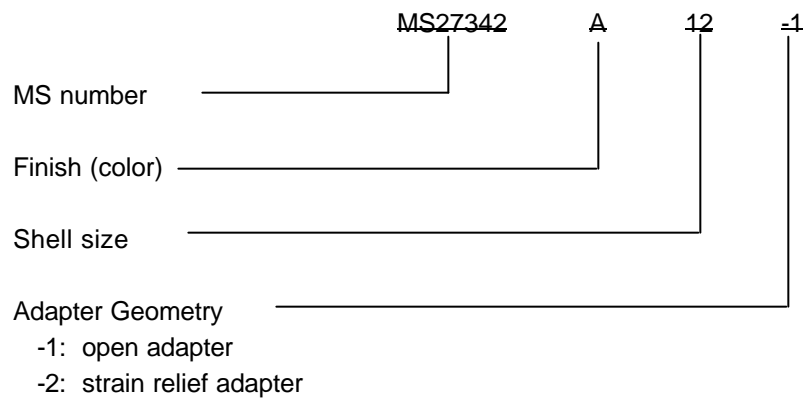
Examination of product.
 Mating and unmating forces.
 Humidity.
 Salt spray (corrosion).
 Altitude immersion.

Group A sampling inspection. 100% inspection is not applicable. Sampling inspection shall be in accordance with table I:

TABLE I. Group A sampling plan.

Lot size	Sample size
1 to 13	100 percent
14 to 150	13 units
151 to 280	20 units
281 to 500	29 units
501 to 1,200	34 units
1,201 to 3,200	42 units

Part or Identifying Number (PIN) example:



MS27342E

CONCLUDING MATERIAL

Custodians:

Army - CR

Navy - AS

Air Force - 11

DLA - CC

Preparing activity:

DLA - CC

(Project 5935-4390)

Review activities:

Army - AR, MI

Navy - EC, MC, OS

Air Force - 19, 99