

INCH - POUND

MS27337E
 31 August 2010
 SUPERSEDING
 MS27337D
 20 May 2005

DETAIL SPECIFICATION SHEET

CONNECTORS, RECEPTACLE, ELECTRICAL, JAM NUT MOUNTING,
 SOLDER TYPE, BAYONET COUPLING, CLASSES P AND T, SERIES II

Inactive for new design after 7 December 1998.

This specification is approved for use by all Departments
 and Agencies of the Department of Defense.

The requirements for acquiring the product described herein
 shall consist of this specification sheet and MIL-DTL-27599.

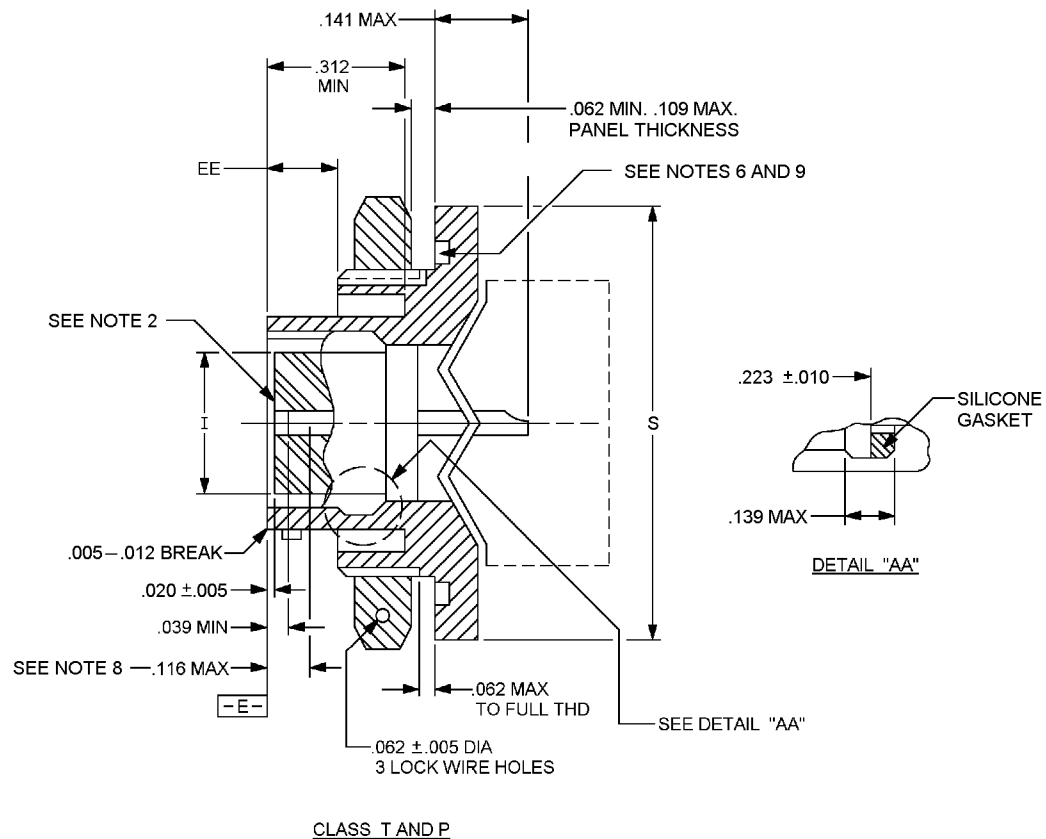


FIGURE 1. Receptacle, jam nut mounting.

MS27337E

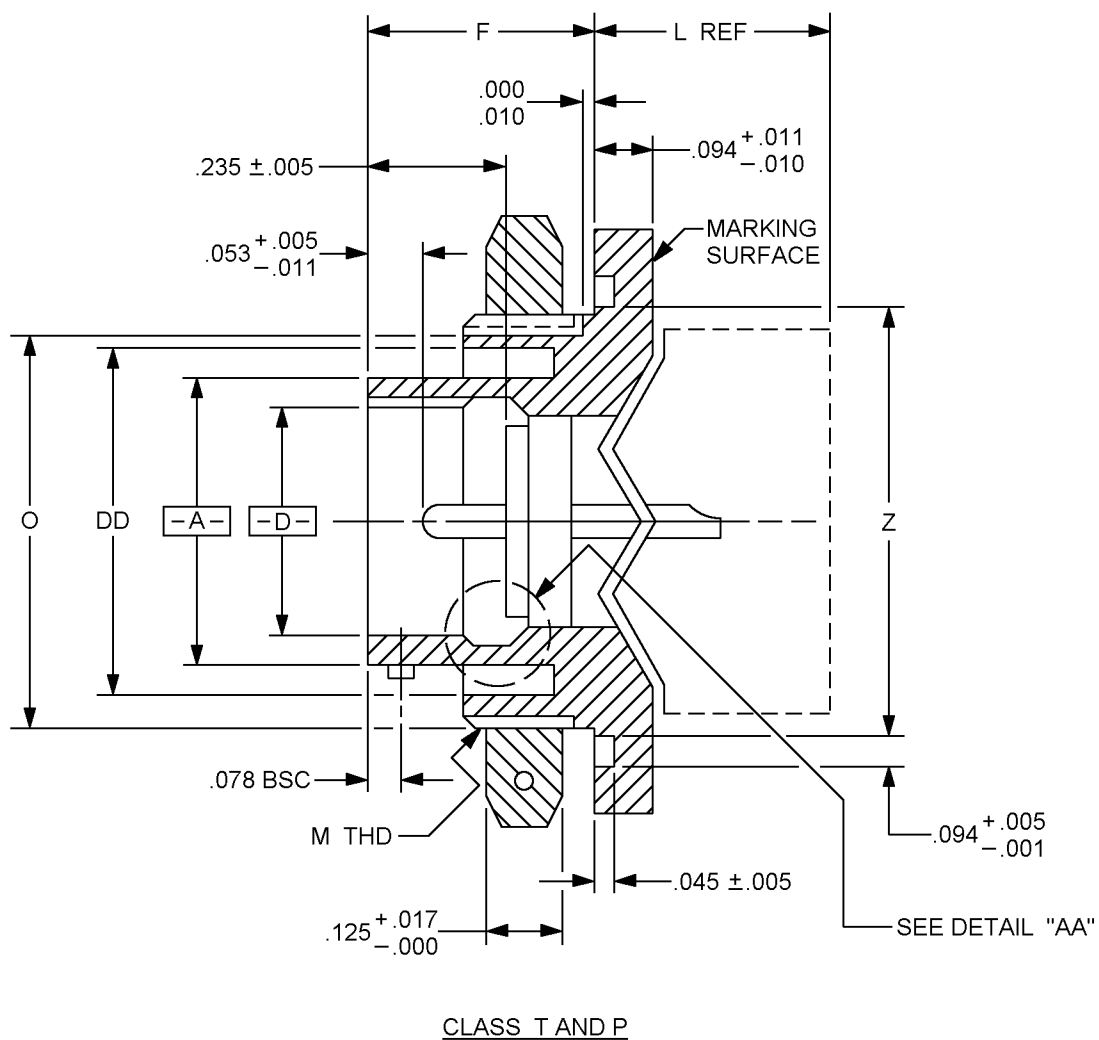


FIGURE 1. Receptacle, jam nut mounting - Continued.

MS27337E

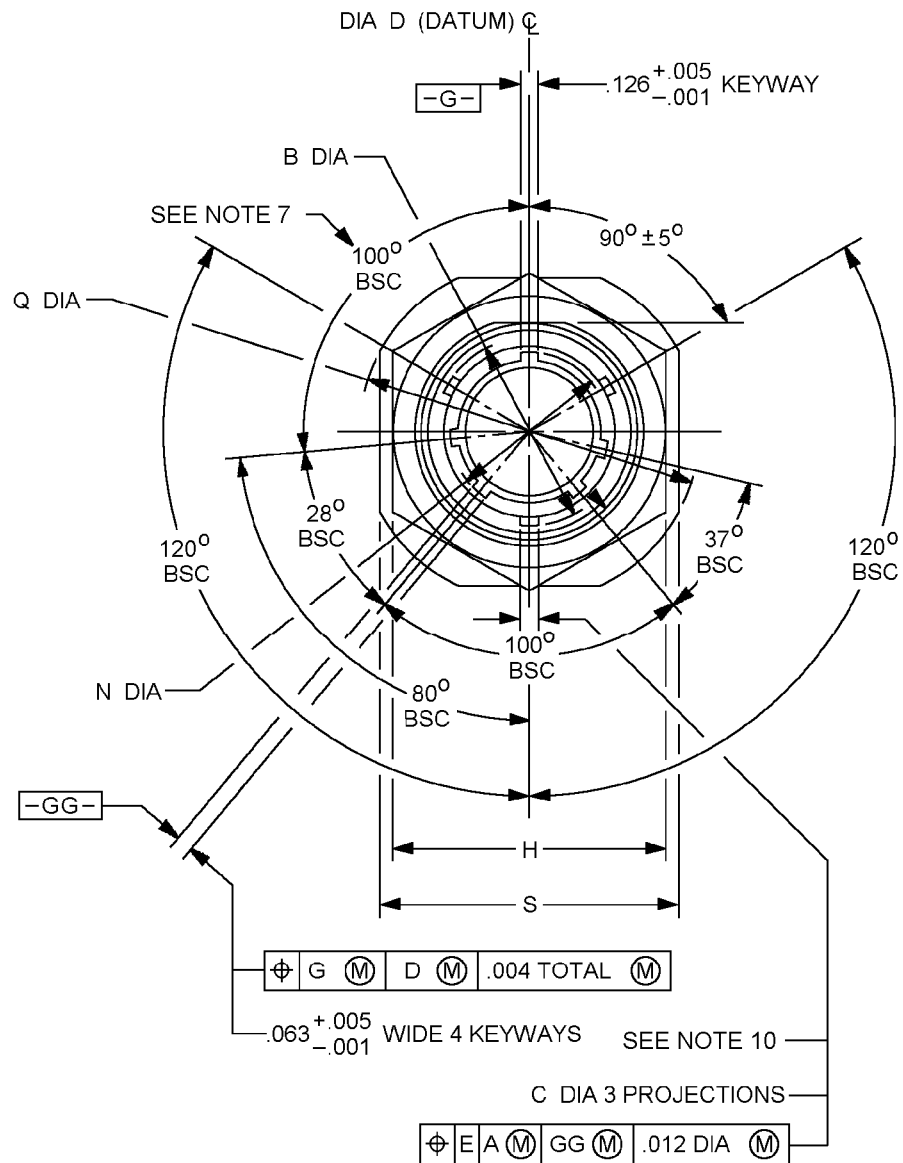


FIGURE 1. Receptacle, jam nut mounting - Continued.

MS27337E

Inches	mm	Inches	mm	Inches	mm	Inches	mm
0.004	0.102	0.02	0.508	0.078	1.981	0.139	3.531
0.005	0.127	0.039	0.991	0.094	2.388	0.141	3.581
0.01	0.254	0.045	1.143	0.109	2.769	0.223	5.664
0.011	0.279	0.053	1.346	0.116	2.946	0.235	5.969
0.012	0.305	0.062	1.575	0.125	3.175	0.312	7.926
0.017	0.432	0.063	1.600	0.126	3.200		

NOTES:

1. Dimensions are in inches. Metric equivalent are given for information only.
2. Insert front surface shall be flat within .005 T.I.R.
3. Diameters A, D, M, Q and Z shall be concentric within .015 T.I.R.
4. Diameters D and I shall be concentric within .005 T.I.R. at MMC.
5. Diameter A with respect to diameter B, and diameter D with respect to diameter N, shall be concentric at MMC.
6. Sides of groove may have 5° max taper.
7. Normal keyway position. For other keyway positions, see MIL-DTL-27599.
8. The point at which a gauge pin having the same basic diameter as the mating contact and a square face, touches socket contact spring.
9. Recommended packing for o-ring shall be in accordance with SAE-AS3578. Recommended packing is for dimensions only. Material is optional.
10. The gauge features for GG shall be CC smaller than their MMC size at basic location.

FIGURE 1. Receptacle, jam nut mounting - Continued.

MS27337E

TABLE I. Dimensions. 1/ 2/

Shell size	A dia + .001 - .005	B dia + .000 - .016 over projections	C dia + .006 - .002	D dia + .005 - .001	F ± .005	H + .017 - .016	I dia ± .005
8	.473 (12.01)	.563 (14.30)	.078 (1.98)	.362 (9.19)	.438 (11.12)	1.062 (26.97)	.296 (7.52)
10	.590 (14.98)	.680 (17.27)		.490 (12.44)		1.188 (30.17)	.413 (10.49)
12	.750 (19.05)	.859 (21.82)		.607 (15.42)		1.312 (33.32)	.527 (13.38)
14	.875 (22.22)	.984 (25.00)		.732 (18.59)		1.438 (36.52)	.652 (16.56)
16	1.000 (25.40)	1.108 (28.14)		.857 (21.77)		1.562 (39.67)	.777 (19.73)
18	1.125 (28.57)	1.233 (31.32)		.962 (24.43)		1.688 (42.87)	.866 (22.00)
20	1.250 (31.75)	1.358 (34.49)	.125 (3.175)	1.087 (27.60)	.464 (11.78)	1.812 (46.02)	.991 (25.17)
22	1.375 (34.92)	1.483 (37.67)		1.212 (30.78)		2.000 (50.80)	1.116 (28.34)
24	1.500 (38.10)	1.610 (40.89)		1.337 (33.96)		2.125 (53.97)	1.241 (31.52)

See notes at end of table.

MS27337E

TABLE I. Dimensions - Continued. 1/ 2/

Shell size	M Thread class 2A plated	N dia + .005 - .006	N flat + .001 - .006	Q dia ± .016	S ± .016
8	7/8 - 20 UNEF	.412 (10.46)	.817 (20.75)	1.375 (34.92)	1.250 (31.75)
10	1 - 20 UNEF	.540 (13.71)	.941 (23.90)	1.500 (38.10)	1.375 (34.92)
12	1 1/8 - 18 UNEF	.689 (17.50)	1.065 (27.05)	1.625 (41.27)	1.500 (38.10)
14	1 1/4 - 18 UNEF	.814 (20.67)	1.190 (30.23)	1.750 (44.45)	1.625 (41.27)
16	1 3/8 - 18 UNEF	.939 (23.85)	1.320 (33.53)	1.938 (49.22)	1.750 (44.45)
18	1 1/2 - 18 UNEF	1.039 (26.39)	1.440 (36.57)	2.016 (51.20)	1.938 (49.22)
20	1 5/8 - 18 UNEF	1.164 (29.56)	1.565 (39.75)	2.141 (54.38)	2.016 (51.20)
22	1 3/4 - 18 UNS	1.289 (32.74)	1.690 (42.92)	2.265 (57.53)	2.141 (54.38)
24	1 7/8 - 16 UN	1.414 (35.91)	1.815 (46.10)	2.390 (60.70)	2.265 (57.53)

See notes at end of table.

MS27337E

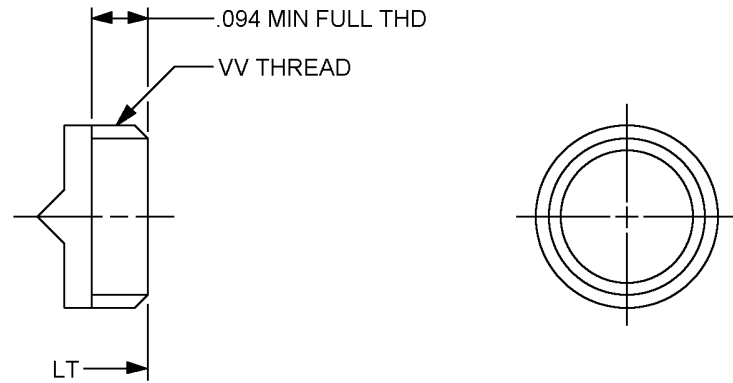
TABLE I. Dimensions - Continued. 1/ 2/

Shell size	Z dia + .006 - .005	CC	DD min dia	EE + .005 - .000	Recommended packing (O-ring)
8	.965 (24.51)	.004 (.102)	.678 (17.22)	.140 (3.56)	SAE-AS3578-022
10	1.090 (27.68)	.010 (.254)	.780 (19.81)		SAE-AS3578-024
12	1.215 (30.86)		.963 (24.46)		SAE-AS3578-026
14	1.340 (34.04)		1.088 (27.63)		SAE-AS3578-028
16	1.477 (37.51)		1.222 (31.04)		SAE-AS3578-029
18	1.602 (40.69)		1.333 (33.86)		SAE-AS3578-030
20	1.727 (43.86)		1.458 (37.03)	.166 (4.22)	SAE-AS3578-031
22	1.852 (47.04)		1.583 (40.21)		SAE-AS3578-032
24	1.977 (50.21)		1.708 (43.38)		SAE-AS3578-033

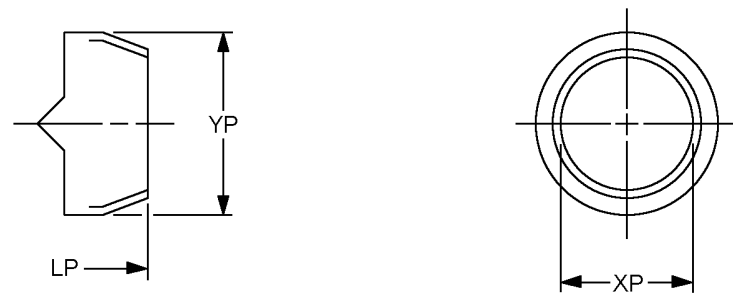
1/ Dimensions are in inches.

2/ Metric equivalent are given for information only.

MS27337E



CLASS T



CLASS P

FIGURE 2. Receptacle, rear accessory areas.

MS27337E

TABLE II. Dimensions (rear accessory). 1/ 2/

Shell size	LT max overall length	VV thread UNEF-2A MOD (plated)		LP max overall length	XP min dia	YP max dia
		size	major dia MOD			
8	.203 (5.16)	.4375 - 28	.421 - .417 (10.69 – 10.60)	.438 (11.12)	.317 (8.05)	.531 (13.48)
10		.5625 - 24	.542 - .538 (13.76 – 13.66)		.434 (11.02)	.641 (16.28)
12		.6875 - 24	.667 - .663 (16.94 – 16.84)		.548 (13.92)	.766 (19.45)
14		.8125 - 20	.791 - .787 (20.09 – 19.98)		.673 (17.09)	.891 (22.63)
16		.9375 - 20	.916 - .912 (23.26 – 23.16)		.798 (20.27)	1.016 (25.80)
18		1.0625 - 18	1.034 - 1.030 (26.26 – 26.16)		.899 (22.83)	1.125 (28.57)
20	.188	1.1875 - 18	1.158 - 1.154 (29.41 – 29.31)		1.024 (26.01)	1.250 (31.75)
22	(4.77)	1.3125 - 18	1.283 - 1.279 (32.58 – 32.48)		1.149 (29.18)	1.375 (34.92)
24	.250 (6.35)	1.4375 - 18	1.408 - 1.404 (35.76 – 35.66)		1.274 (32.36)	1.500 (38.10)

1/ Dimensions are in inches.

2/ Metric equivalents are given for information only.

REQUIREMENTS:

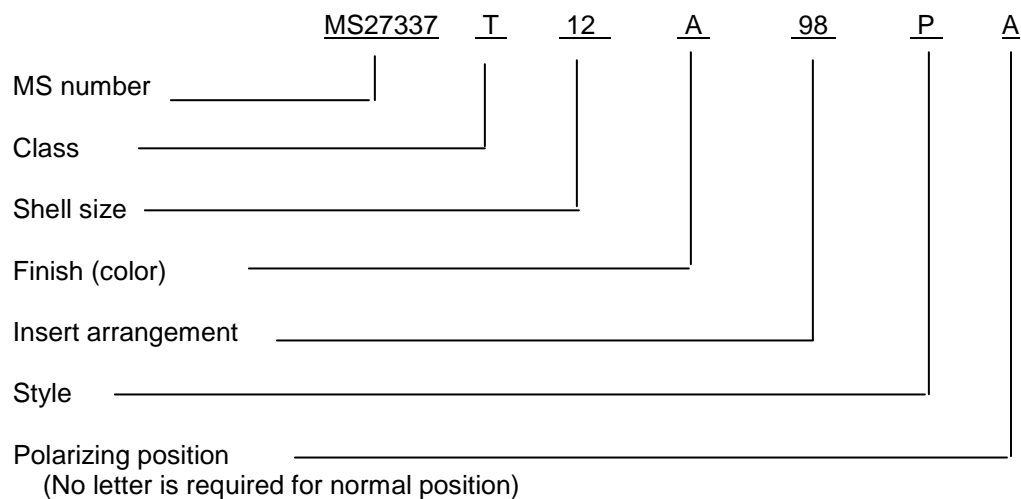
Dimensions and configurations: See figures 1 and 2 and tables I and II.

This connector mates with MS27336.

Insert arrangement shall be in accordance with MIL-STD-1560.

MS27337E

Part or Identifying Number (PIN) example:



Changes from previous issue. Marginal notations are not used in this revision to identify changes with respect to the previous issue due to the extent of the changes.

Referenced documents. In addition to MIL-DTL-27599, this document references the following:

MS27336
MIL-STD-1560
SAE-AS3578

MS27337E

CONCLUDING MATERIAL

Custodians:

Air Force - 85
DLA - CC

Preparing activity:

DLA - CC

Review activities:

Air Force - 99
DLA - IS

(Project 5935-2010-141)

NOTE: The activities listed above were interested in this document as of the date of this document. Since organizations and responsibilities can change, you should verify the currency of the information above using the ASSIST Online database at <https://assist.daps.dla.mil>.