

MS27336G

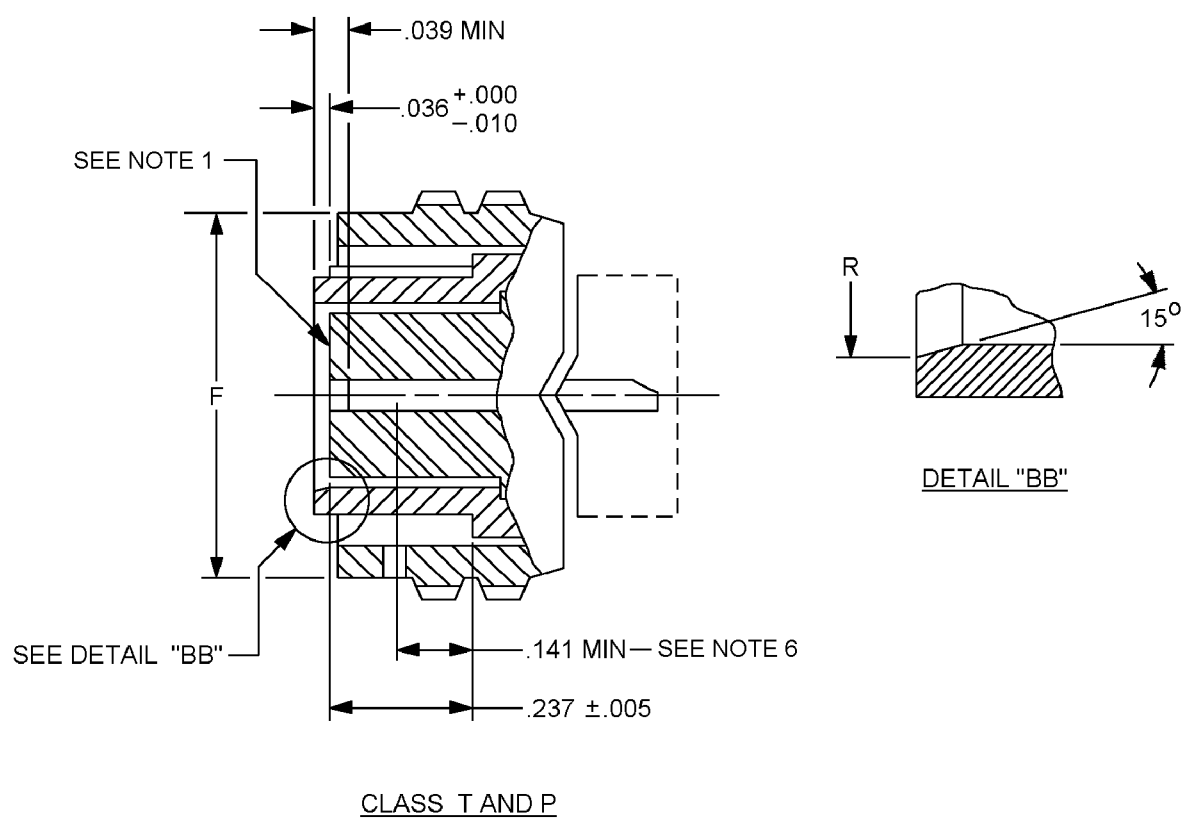


FIGURE 1. Plug, straight - Continued.

MS27336G

| Inches | mm | Inches | mm | Inches | mm | Inches | mm |
|--------|--------|--------|-------|--------|-------|--------|-------|
| 0.001 | 0.0254 | 0.01 | 0.254 | 0.039 | 0.991 | 0.237 | 6.02 |
| 0.002 | 0.0508 | 0.011 | 0.279 | 0.052 | 1.321 | 0.257 | 6.528 |
| 0.003 | 0.0762 | 0.012 | 0.305 | 0.100 | 2.540 | 0.312 | 7.925 |
| 0.004 | 0.1016 | 0.018 | 0.457 | 0.141 | 3.581 | | |
| 0.005 | 0.1270 | 0.036 | 0.914 | 0.204 | 5.182 | | |

NOTES:

1. Insert front surface shall be flat within .005 T.I.R.
2. Diameter D with respect to diameter S shall be concentric at MMC.
3. Diameters A and N shall be concentric within .008 (.203) T.I.R.
4. Dimensions are in inches. Metric equivalents are given for information only.
5. Normal keyway position. For other keyway positions, see MIL-DTL-27599.
6. The point at which a gauge pin having the same basic diameter as the mating contact and a square face, touches socket contact spring.
7. Holes shall be provided for visual inspection of lock when mated with receptacle.

FIGURE 1. Plug, straight – Continued.

MS27336G

TABLE I. Dimensions. 1/ 2/

| Shell size | A dia + .005 - .001 | B $\pm .020$ | C + .015 - .001 | D dia + .001 - .005 | E min dia | F dia + .000 - .006 |
|------------|---------------------------|--------------------|-----------------------|---------------------------|------------------|---------------------------|
| 8 | .481 (12.22) | .096 (2.44) | .090 (2.28) | .357 (9.07) | .306 (7.77) | .630 (16.00) |
| 10 | .602 (15.29) | | | .485 (12.32) | .423 (10.74) | .752 (19.10) |
| 12 | .761 (19.33) | | | .597 (15.16) | .537 (13.64) | .925 (23.49) |
| 14 | .885 (22.48) | | | .722 (18.34) | .662 (16.81) | 1.050 (26.67) |
| 16 | 1.010 (25.65) | | | .847 (21.51) | .787 (19.99) | 1.172 (29.77) |
| 18 | 1.136 (28.85) | | | .947 (24.05) | .876 (22.25) | 1.304 (33.12) |
| 20 | 1.260 (32.00) | .123 (3.12) | .137 (3.48) | 1.072 (27.23) | 1.001 (25.42) | 1.435 (36.45) |
| 22 | 1.385 (35.18) | | | 1.197 (30.40) | 1.126 (28.60) | 1.560 (39.62) |
| 24 | 1.510 (38.35) | | | 1.322 (33.58) | 1.251 (31.77) | 1.688 (42.87) |

See notes at end of table.

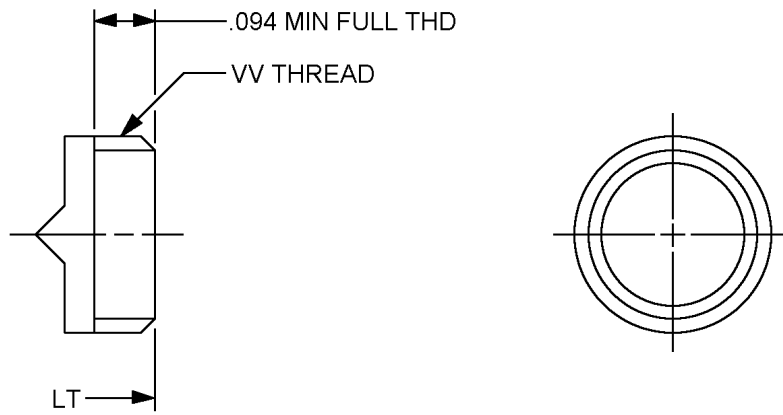
MS27336G

TABLE I. Dimensions - Continued. 1/ 2/

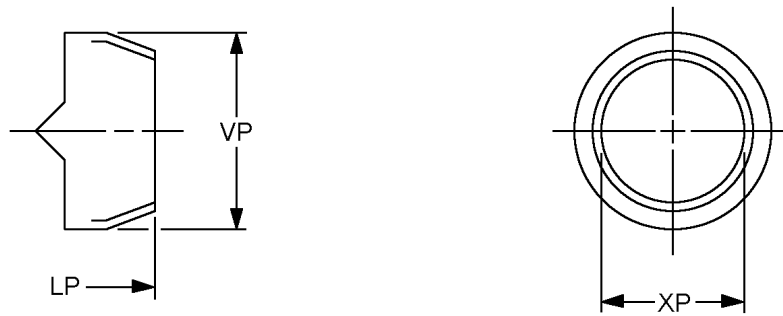
| Shell size | K max ref | N dia + .010 - .006 | Q max dia | R dia + .005 - .006 | S + .001 - .010 | W ± .015 |
|------------|----------------|---------------------------|------------------|---------------------------|-----------------------|-----------------|
| 8 | .155 (3.94) | .576 (14.63) | .750 (19.05) | .316 (8.03) | .402 (10.21) | .547 (13.89) |
| 10 | | .697 (17.70) | .859 (21.82) | .436 (11.07) | .530 (13.46) | |
| 12 | | .871 (22.12) | 1.031 (26.19) | .549 (13.94) | .679 (17.24) | |
| 14 | | .995 (25.27) | 1.156 (29.36) | .675 (17.14) | .804 (20.42) | |
| 16 | | 1.120 (28.45) | 1.281 (32.53) | .799 (20.29) | .929 (23.59) | |
| 18 | | 1.245 (31.62) | 1.406 (35.71) | .893 (22.68) | 1.029 (26.13) | |
| 20 | .109 (2.77) | 1.370 (34.80) | 1.531 (38.88) | 1.018 (25.86) | 1.154 (29.31) | .524 |
| 22 | | 1.495 (37.97) | 1.641 (41.68) | 1.143 (29.03) | 1.279 (32.48) | (13.31) |
| 24 | | 1.624 (41.25) | 1.766 (44.85) | 1.268 (32.20) | 1.404 (35.66) | .575 (14.60) |

1/ Dimensions are in inches.2/ Metric equivalents are given for information only.

MS27336G



CLASS T



CLASS P

FIGURE 2. Plug, straight, rear accessory areas.

MS27336G

TABLE II. Dimensions (rear accessory). 1/ 2/

| Shell size | LT max overall length | VV thread UNEF-2A MOD (Plated) | | LP max | XP min | VP max |
|------------|-----------------------|--------------------------------|----------------------------------|-----------------|------------------|------------------|
| | | size | major dia MOD | | | |
| 8 | .625 (15.87) | .4375 - 28 | .421 - .417 (10.69 – 10.60) | .797 (20.24) | .317 (8.05) | .531 (13.48) |
| 10 | | .5625 - 24 | .542 - .538 (13.76 – 13.66) | | .434 (11.02) | .641 (16.28) |
| 12 | | .6875 - 24 | .667 - .663 (16.94 – 16.84) | | .548 (13.92) | .766 (19.45) |
| 14 | | .8125 - 20 | .791 - .787 (20.09 – 19.98) | | .673 (17.09) | .891 (22.63) |
| 16 | | .9375 - 20 | .916 - .912 (23.26 – 23.16) | | .798 (20.27) | 1.016 (25.80) |
| 18 | | 1.0625 - 18 | 1.034 - 1.030 (26.26 – 26.16) | | .899 (22.83) | 1.125 (28.57) |
| 20 | | 1.1875 - 18 | 1.158 - 1.154 (29.41 – 29.31) | | 1.024 (26.01) | 1.250 (31.75) |
| 22 | .703 (17.85) | 1.3125 - 18 | 1.283 - 1.279 (32.58 – 32.48) | .875 (22.22) | 1.149 (29.18) | 1.375 (34.92) |
| 24 | | 1.4375 - 18 | 1.408 - 1.404 (35.76 – 35.66) | | 1.274 (32.36) | 1.500 (38.10) |

1/ Dimension are in inches.

2/ Metric equivalents are given for information only.

REQUIREMENTS:

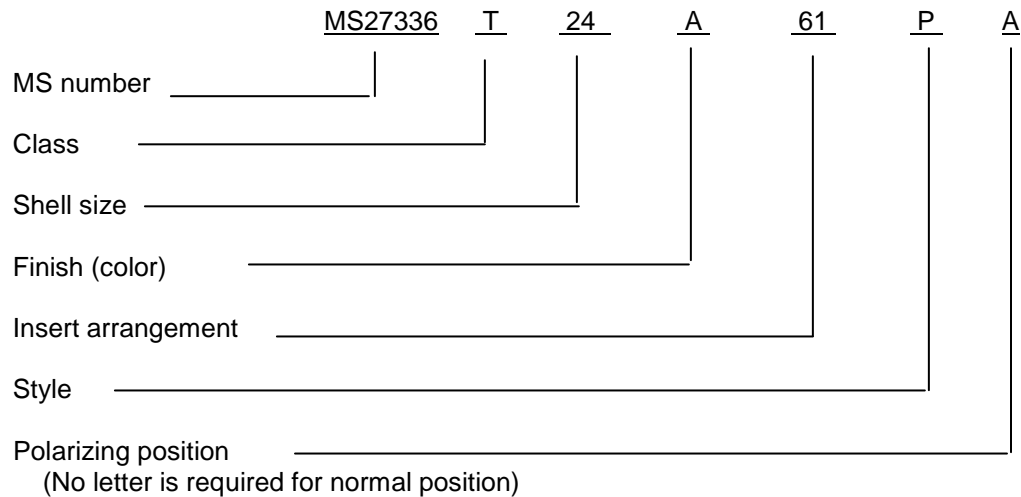
Dimensions and configurations: See figures 1 and 2 and tables I and II.

This connector mates with MS27334, MS27335 and MS27337.

Insert arrangement shall be in accordance with MIL-STD-1560.

MS27336G

Part or Identifying Number (PIN) example:



Changes from previous issue. Marginal notations are not used in this revision to identify changes with respect to the previous issue due to the extent of the changes.

Referenced documents. In addition to MIL-DTL-27599, this document references the following:

MIL-STD-1560
MS27334
MS27335
MS27337

CONCLUDING MATERIAL

Custodians:
Air Force - 85
DLA - CC

Preparing activity:
DLA - CC

Review activities:
Air Force - 99
DLA - IS

(Project 5935-2010-140)

NOTE: The activities listed above were interested in this document as of the date of this document. Since organizations and responsibilities can change, you should verify the currency of the information above using the ASSIST Online database at <https://assist.daps.dla.mil>.