

INCH - POUND

MS27335E
 31 August 2010
 SUPERSEDING
 MS27335D
 20 May 2005

DETAIL SPECIFICATION SHEET

CONNECTORS, RECEPTACLE, ELECTRICAL, BOX, FLANGE MOUNT,
 SOLDER TYPE, BAYONET COUPLING, CLASS T, SERIES II

Inactive for new design after 7 December 1998.

This specification is approved for use by all Departments
 and Agencies of the Department of Defense.

The requirements for acquiring the product described herein
 shall consist of this specification sheet and MIL-DTL-27599.

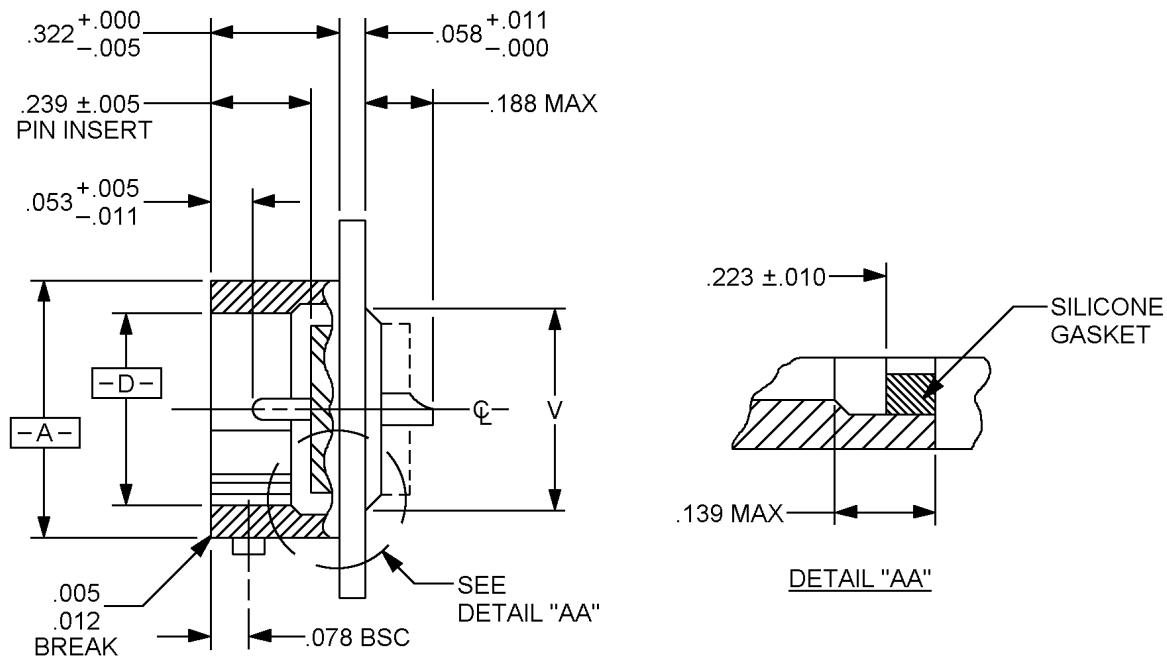
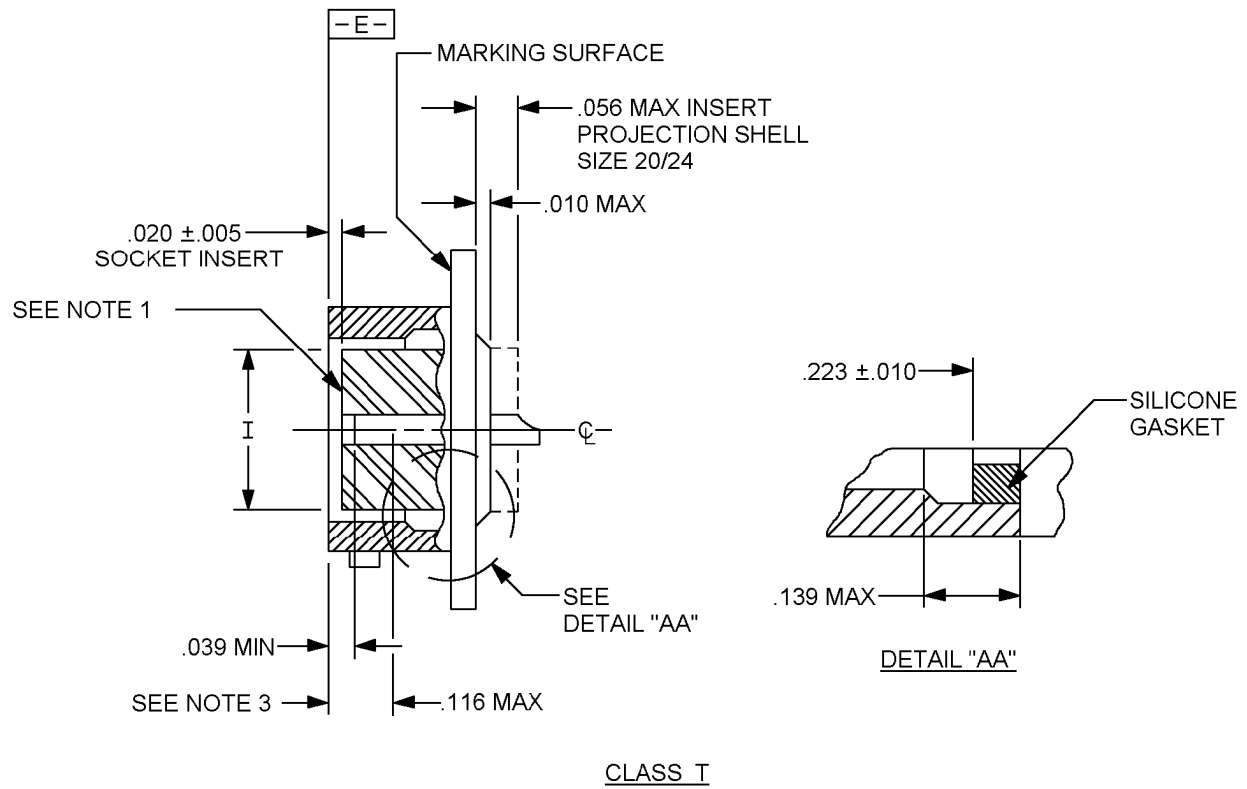


FIGURE 1. Receptacle, box, flange mount.

MS27335E

FIGURE 1. Receptacle, box, flange mount - Continued.

MS27335E

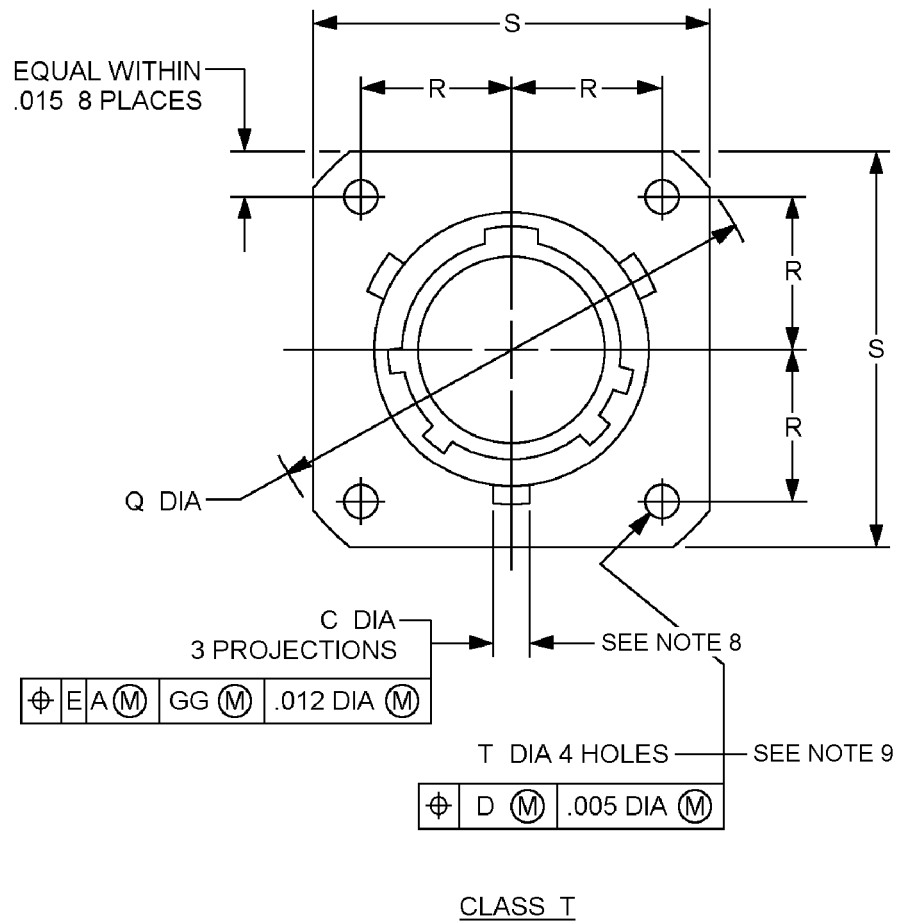


FIGURE 1. Receptacle, box, flange mount - Continued.

MS27335E

Inches	mm	Inches	mm	Inches	mm	Inches	mm
0.001	0.0254	0.012	0.305	0.058	1.473	0.139	3.531
0.004	0.1016	0.015	0.381	0.063	1.600	0.188	4.775
0.005	0.127	0.02	0.508	0.078	1.981	0.223	5.664
0.010	0.254	0.039	0.991	0.116	2.947	0.239	6.071
0.011	0.279	0.053	1.346	0.126	3.200	0.322	8.179

NOTES:

1. Insert front surface shall be flat within .005 T.I.R.
2. Dimensions are in inches. Metric equivalents are given for information only.
3. The point at which a gauge pin having the same basic diameter as the mating contact and a square face, touches socket contact spring.
4. Normal keyway position. For other keyway positions, see MIL-DTL-27599.
5. Diameters A and D shall be concentric within .015 T.I.R.
6. Diameter A with respect to diameter B, and diameter D with respect to diameter N, shall be concentric at MMC.
7. Diameters D and I shall be concentric within .005 T.I.R. at MMC.
8. The gauge features for GG shall be CC smaller than their MMC size at basic location.
9. The gauge features for GG shall be .010 smaller than their MMC size at basic location.

FIGURE 1. Receptacle, box, flange mount - Continued.

MS27335E

TABLE I. Dimensions. 1/ 2/

Shell size	A dia + .001 - .005	B dia + .000 - .016 over projections	C dia + .006 - .002	D dia + .005 - .001	I dia ± .005	N dia + .005 - .006
8	.473 (12.01)	.563 (14.30)	.078 (1.98)	.362 (9.19)	.296 (7.52)	.412 (10.46)
10	.590 (14.98)	.680 (17.27)		.490 (12.44)	.413 (10.49)	.540 (13.71)
12	.750 (19.05)	.859 (21.82)		.607 (15.42)	.527 (13.38)	.689 (17.50)
14	.875 (22.22)	.984 (25.00)		.732 (18.59)	.652 (16.56)	.814 (20.67)
16	1.000 (25.40)	1.108 (28.14)		.857 (21.77)	.777 (19.73)	.939 (23.85)
18	1.125 (28.57)	1.233 (31.32)		.962 (24.43)	.866 (22.00)	1.039 (26.39)
20	1.250 (31.75)	1.358 (34.49)	.125 (3.175)	1.087 (27.60)	.991 (25.17)	1.164 (29.56)
22	1.375 (34.92)	1.483 (37.67)		1.212 (30.78)	1.116 (28.34)	1.289 (32.74)
24	1.500 (38.10)	1.610 (40.89)		1.337 (33.96)	1.241 (31.52)	1.414 (35.91)

See notes at end of table.

MS27335E

TABLE I. Dimensions – Continued. 1/ 2/

Shell size	Q max dia	R BSC	S max	T + .010 - .005	V max dia	CC
8	1.078 (27.38)	.297 (7.54)	.828 (21.03)	.120 (3.05)	.406 (10.31)	.004 (.102)
10	1.266 (32.15)	.3595 (9.1313)	.954 (24.23)		.516 (13.10)	.010 (.254)
12	1.391 (35.33)	.406 (10.31)	1.047 (26.59)		.640 (16.26)	
14	1.516 (38.50)	.453 (11.50)	1.141 (28.98)		.766 (19.45)	
16	1.641 (41.68)	.4845 (12.30)	1.234 (31.34)		.890 (22.60)	
18	1.766 (44.85)	.531 (13.48)	1.328 (33.73)		.984 (25.00)	
20	1.891 (48.03)	.578 (14.68)	1.453 (36.90)		1.109 (28.17)	
22	2.016 (51.20)	.625 (15.87)	1.578 (40.08)		1.234 (31.34)	
24	2.204 (55.98)	.6875 (17.46)	1.703 (43.25)	.147 (3.73)	1.359 (34.52)	

1/ Dimensions are in inches.2/ Metric equivalents are given for information only.

REQUIREMENTS:

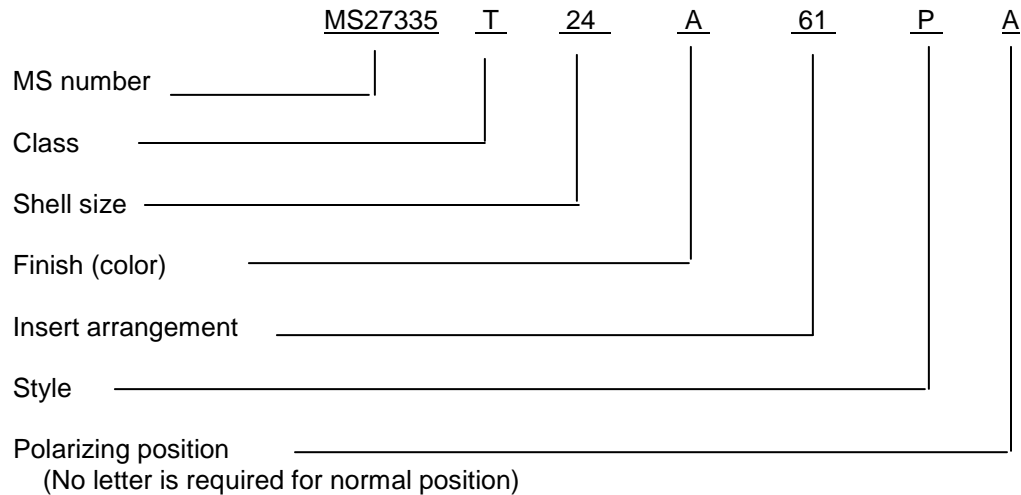
Dimensions and configurations: See figure 1 and table I.

This connector mates with MS27336.

Insert arrangement shall be in accordance with MIL-STD-1560.

MS27335E

Part or Identifying Number (PIN) example:



Changes from previous issue. Marginal notations are not used in this revision to identify changes with respect to the previous issue due to the extent of the changes.

Referenced documents. In addition to MIL-DTL-27599, this document references the following:

MIL-STD-1560
MS27336

CONCLUDING MATERIAL

Custodians:
Air Force - 85
DLA - CC

Preparing activity:
DLA - CC

Review activities:
Air Force - 99
DLA - IS

(Project 5935-2010-101)

NOTE: The activities listed above were interested in this document as of the date of this document. Since organizations and responsibilities can change, you should verify the currency of the information above using the ASSIST Online database at <https://assist.daps.dla.mil>.