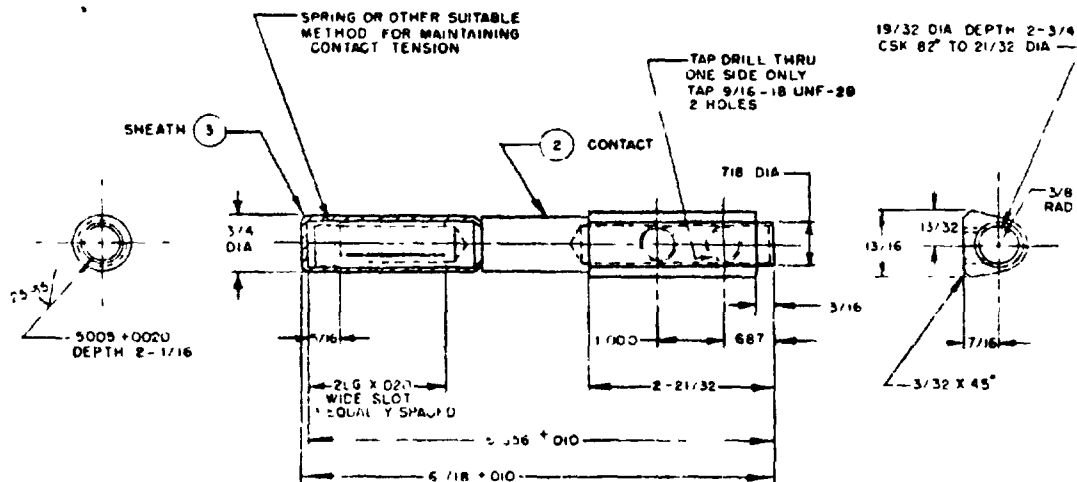


DETAIL A SHOWING CONTACT END ONLY



PART NO
MS27283-1

- 1 MATERIAL 2 COPPER ALLOY - SEE PROCUREMENT SPECIFICATION
2 FINISH SEE PROCUREMENT SPECIFICATION
3 UNLESS OTHERWISE SPECIFIED MACHINED SURFACES 12 $\frac{1}{2}$ OR BETTER PER ANSI B46.1 1962
4 REMOVE ALL BURRS AND BREAK SHARP EDGES
5 ALL DIMENSIONS SHOWN ARE FOR FINISHED PART AFTER PLATING
6 DIMENSIONS IN INCHES, UNLESS OTHERWISE SPECIFIED TOLERANCES ON FRACTIONS $\pm 1/64$, DECIMALS ± 0.005
7 ALL DIAMETERS MUST BE CO CENTRIC TO EACH OTHER WITHIN 0.001 IR

REACTIVATED AFTER 8 MARCH 1974

USE WITH MS27282

FOR BEST & FEATURE PURPOSES THIS STANDARD TAKES PRECEDENCE OVER PROCUREMENT DOCUMENTS REFERENCED HEREIN
REFERENCED DOCUMENTS SHALL BE OF THE ISSUE IN EFFECT ON DATE OF INVITATIONS FOR BID

P.A. Air Force - II Change Card	TITLE CONTACT, ELECTRICAL PLUG CONNECTOR, RAMP POWER 416/240 VOLTS LARGE FEMALE	MILITARY STANDARD
		MS27283(USAF)
NON-IDENTIFIED BY AIRMAN MIL-C-58159	SUPERSEDES	Supp. L.T. CR