

INCH-POUND

MS27282B
 7 January 2009
 SUPERSEDING
 MS27282A
 17 June 2003

DETAIL SPECIFICATION SHEET

INSERT, ELECTRICAL CONNECTOR - RAMP POWER,
 416/240 VOLTS, FEMALE

This specification is approved for use by all Departments
 and Agencies of the Department of Defense.

The requirements for acquiring the product described herein
 shall consist of this specification sheet and MIL-DTL-38159.

Inches	mm	Inches	mm	Inches	mm
.005	.127	.365	9.271	1.302	33.071
.010	.254	.380	9.652	1.658	42.113
.015	.381	.406	10.319	2.606	66.192
.020	.508	.438	11.125	2.610	66.294
.031	.787	.562	14.287	3.000	76.200
.032	.813	.586	14.884	3.050	77.470
.046	1.168	.588	14.935	3.125	79.375
.062	1.587	.654	16.612	3.156	80.162
.070	1.778	.677	17.196	3.375	85.725
.125	3.175	.829	21.057	7.032	178.61
.250	6.350	1.000	25.400	8.218	208.74
.260	6.604	1.175	29.845		

NOTES:

1. The procurement specification for this part is MIL-DTL-38159.
2. Material: See procurement specification.
3. Remove all sharp edges.
4. Unless otherwise specified, tolerances are $\pm .010$ inch.
5. For design feature purposes, this standard takes precedence over procurement documents referenced herein.
6. Reference documents shall be of the issue in effect on the date of the Invitation for Bid.
7. Part or Identifying Number (PIN): MS27282-1.
8. Electrical contact: See figure 2.
9. Dimensions are in inches. Metric equivalents are given for information only.

FIGURE 1. Configuration and dimensions for MS27282-1.

MS27282B

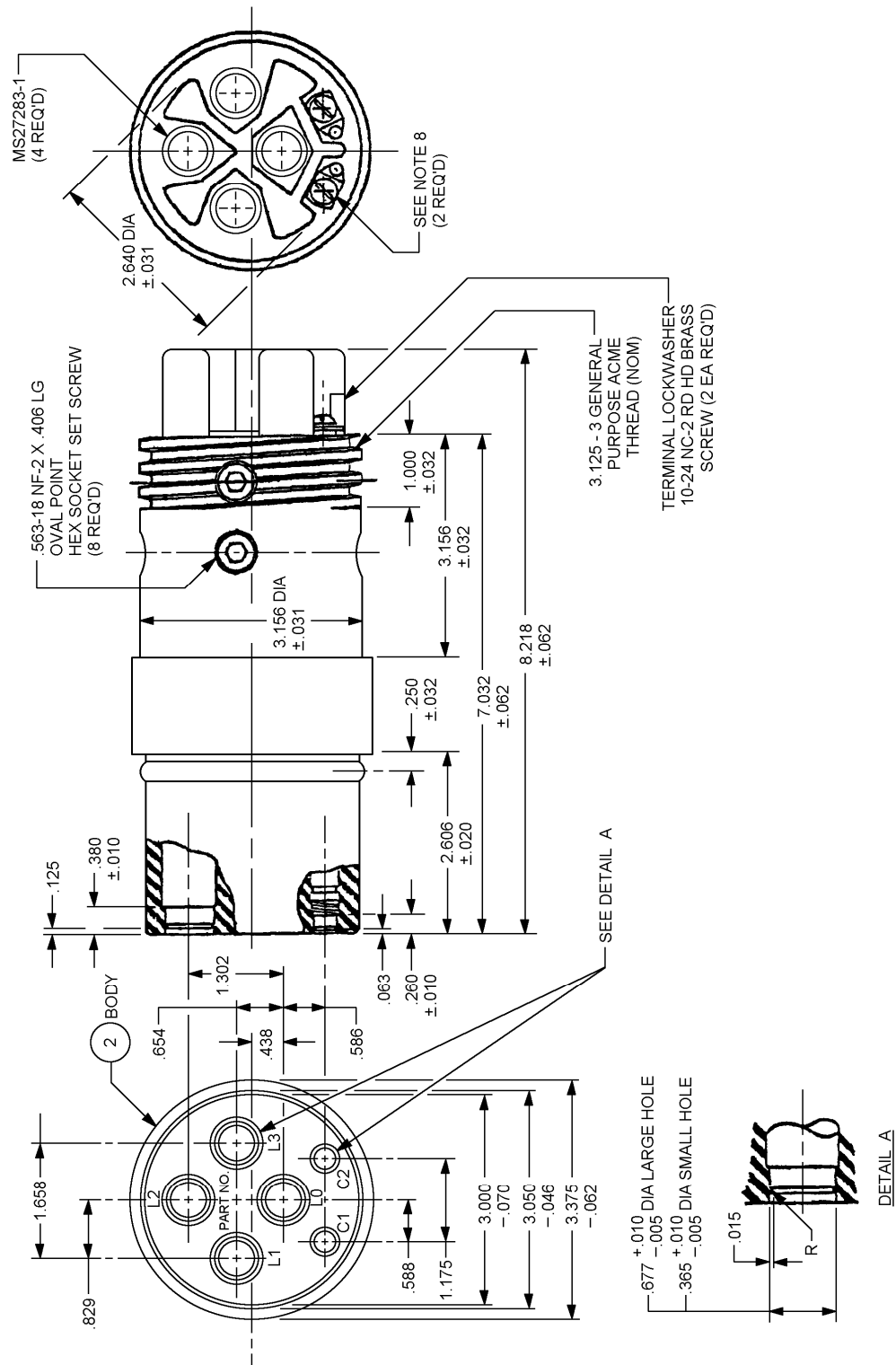
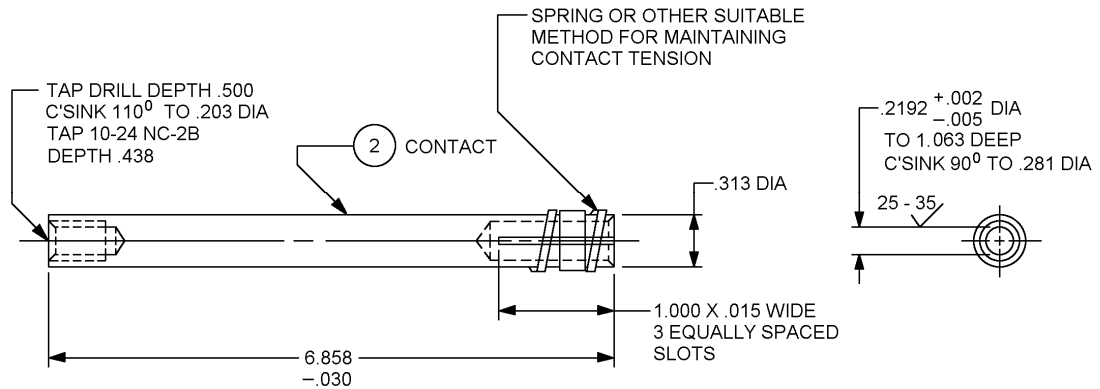


FIGURE 1. Configuration and dimensions for MS27282-1 - Continued.

MS27282B



Inches	mm	Inches	mm
.002	.051	.281	7.137
.004	.102	.312	7.937
.005	.127	.437	11.112
.015	.381	.500	12.700
.030	.762	1.062	26.987
.203	5.159	6.858	174.19
.219	5.568		

NOTES:

1. The procurement specification for this part is MIL-DTL-38159.
2. Material: Brass, in accordance with ASTM-B36/B36M, ASTM-B121/B121M or ASTM-B124/B124M. See procurement specification.
3. Finish: See procurement specification.
4. Unless otherwise specified, machined surfaces 125 $\sqrt{}$ or better in accordance with ASME-B46.1.
5. Remove all burrs and break all edges.
6. All dimensions shown are for finished part after plating.
7. Dimensions in inches. Unless otherwise specified, tolerance is ± 0.005 inch.
8. All diameters must be concentric to each other within 0.004 TIR.
9. Contact, electrical – plug connector, ramp power. 416/240 volts, small, female. For use with MS27282-1.

FIGURE 2. Configuration and dimensions (contact).

MS27282B

Dimensions and configuration. See figure 1 and figure 2.

Changes from previous issue. Marginal notations are not used in this revision to identify changes with respect to the previous issue due to the extent of the changes.

Referenced documents. In addition to MIL-DTL-38159, this document references the following:

ASME-B46.1
ASTM-B36/B36M
ASTM-B121/B121M
ASTM-B124/B124M

CONCLUDING MATERIAL

Custodians:
Air Force - 85
DLA - CC

Preparing activity:
DLA - CC

(Project 5935-2008-137)

Review activity:
Air Force - 99

NOTE: The activities listed above were interested in this document as of date of this document. Since organization and responsibilities can change, you should verify the currency of the information above using the ASSIST Online database at <http://assist.daps.dla.mil>.