

INCH-POUND

MS27282A
 17 June 2003
 SUPERSEDING
 MS27282
 7 October 1963

DETAIL SPECIFICATION SHEET

INSERT, ELECTRICAL CONNECTOR - RAMP POWER,
 416/240 VOLTS, FEMALE

This specification is approved for use by all Departments
 and Agencies of the Department of Defense.

The requirements for acquiring the product described
 herein shall consist of this specification and MIL-C-38159.

Inches	mm	Inches	mm	Inches	mm
.005	.127	.365	9.271	1.302	33.071
.010	.254	.380	9.652	1.658	42.113
.015	.381	.406	10.319	2.606	66.192
.020	.508	.438	11.125	2.610	66.294
.031	.787	.562	14.287	3.000	76.200
.032	.813	.586	14.884	3.050	77.470
.046	1.168	.588	14.935	3.125	79.375
.062	1.587	.654	16.612	3.156	80.162
.070	1.778	.677	17.196	3.375	85.725
.125	3.175	.829	21.057	7.032	178.61
.250	6.350	1.000	25.400	8.218	208.74
.260	6.604	1.175	29.845		

NOTES:

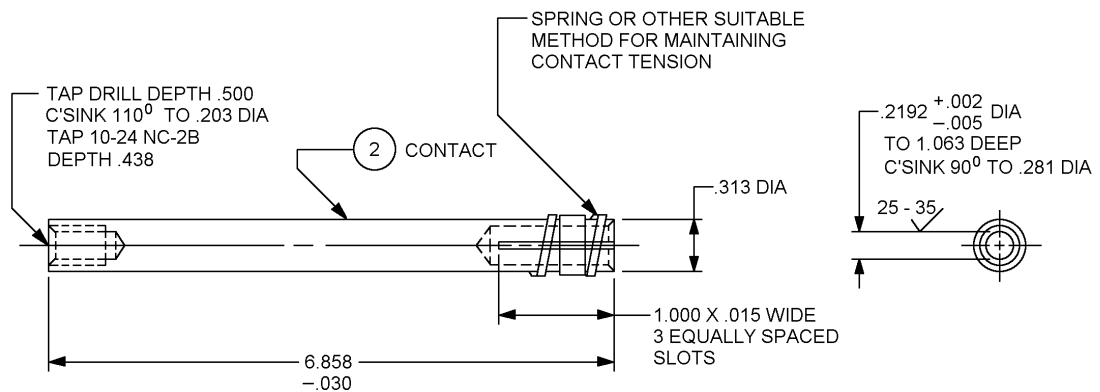
1. The procurement specification for this part is MIL-C-38159.
2. Material: See procurement specification.
3. Remove all sharp edges.
4. Unless otherwise specified, tolerances are $\pm .010$ inch.
5. For design feature purposes, this standard takes precedence over procurement documents referenced herein.
6. Reference documents shall be of the issue in effect on the date of the Invitation for Bid.
7. Part or Identifying Number (PIN): MS27282-1.
8. Electrical contact: See figure 2.

FIGURE 1. Configuration and dimensions for MS27282-1.



FIGURE 1. Configuration and dimensions for MS27282-1 - Continued.

MS27282A



Inches	mm	Inches	mm
.002	.051	.281	7.137
.005	.127	.312	7.937
.015	.381	.437	11.112
.030	.762	.500	12.700
.203	5.159	1.062	26.987
.219	5.568	6.858	174.19

NOTES:

1. The procurement specification for this part is MIL-C-38159.
2. Material: Brass, in accordance with ASTM B36/B36M, ASTM B121/B121M or ASTM B124/B124M. See procurement specification.
3. Finish: See procurement specification.
4. Unless otherwise specified, machined surfaces 125 \sqrt or better in accordance with ASME B46.1.
5. Remove all burrs and break all edges.
6. All dimensions shown are for finished part after plating.
7. Dimensions in inches. Unless otherwise specified, tolerance is \pm 0.005 inch.
8. All diameters must be concentric to each other within 0.004 TIR.
9. Contact, electrical – plug connector, ramp power. 416/240 volts, small, female. For use with MS27282-1.

FIGURE 2. Configuration and dimensions (contact).

MS27282A

(Marginal notations are not used in this revision to identify changes with respect to the previous issue due to the extent of the changes.)

CONCLUDING MATERIAL

Custodians:
Air Force - 11
DLA - CC

Review activity:
Air Force - 99

Preparing activity:
DLA - CC

(Project 5935-4427-008)