

INCH-POUND

MS27266B
 7 January 2009
 SUPERSEDING
 MS27266A
 17 June 2003

DETAIL SPECIFICATION SHEET

INSERT, ELECTRICAL CONNECTOR - RAMP POWER,
 416/240 VOLTS, MALE

This specification is approved for use by all Departments
 and Agencies of the Department of Defense.

The requirements for acquiring the product described herein
 shall consist of this specification sheet and MIL-DTL-38159.

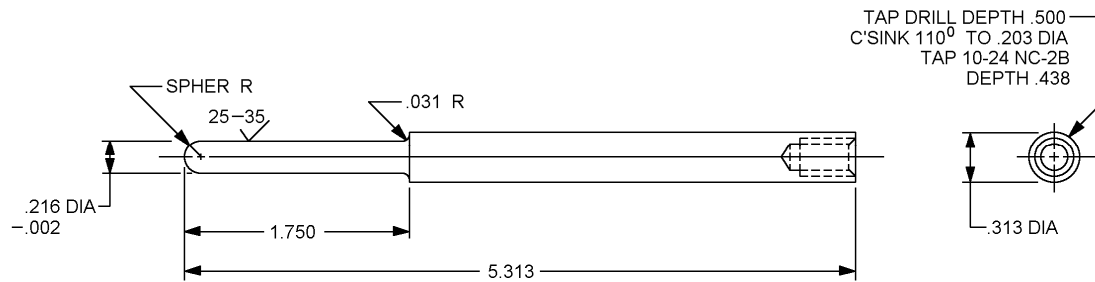
Inches	mm	Inches	mm	Inches	mm
.005	.127	.438	11.125	2.575	65.405
.010	.254	.562	14.287	2.640	67.056
.015	.381	.586	14.884	2.937	74.600
.031	.787	.588	14.935	3.125	79.375
.032	.813	.654	16.612	3.156	80.162
.062	1.575	.664	16.866	3.250	82.550
.093	2.362	.829	21.057	3.375	85.725
.125	3.175	1.000	25.400	3.531	89.687
.250	6.350	1.175	29.845	7.032	178.61
.350	8.890	1.302	33.071	8.218	208.74
.375	9.525	1.658	42.113		
.406	10.319	2.250	57.150		

NOTES:

1. Dimensions are in inches. Metric equivalents are given for information only.
2. The procurement specification for this part is MIL-DTL-38159.
3. Material: See procurement specification.
4. Remove all sharp edges.
5. Unless otherwise specified, tolerances on decimals are $\pm .010$ inch.
6. For design feature purposes, this standard takes precedence over procurement documents referenced herein.
7. Referenced documents shall be of the issue in effect on date of Invitation for Bid.
8. Part or Identifying Number (PIN): MS27266-1.
9. Electrical contact. See figure 2.
10. Electrical contact. See figure 3.

FIGURE 1. Configurations and dimensions for MS27266-1.

MS27266B



Inches	mm
.002	.051
.004	.102
.005	.127
.031	.794
.216	5.482
.313	7.938
1.750	44.45
5.313	134.94

NOTES:

1. For use with MS27266-1.
2. Procurement specification MIL-DTL-38159.
3. Material: Brass, in accordance with ASTM-B36/B36M, ASTM-B121/B121M or ASTM-B124/B124M. See procurement specification.
4. Finish: See procurement specification.
5. Unless otherwise specified, machined surfaces 125 \sqrt or better in accordance with ASME B46.1.
6. Remove all burrs and break all edges.
7. All dimensions shown are for finished part after plating.
8. Dimensions in inches. Unless otherwise specified, tolerances ± 0.005 inch.
9. All diameters must be concentric to each other within 0.004 TIR.

FIGURE 3. Contact, electrical plug connector, ramp power, 416/240 volts, small, male.

MS27266B

Dimensions and configurations: See figures 1, 2, and 3.

Changes from previous issue. Marginal notations are not used in this revision to identify changes with respect to the previous issue due to the extent of the changes.

Reference documents. In addition to MIL-DTL-38159, this document references the following.

ASME B46.1
ASTM-B36/B36M
ASTM-B121/B121M
ASTM-B124/B124M

CONCLUDING MATERIAL

Custodians:
Air Force - 85
DLA - CC

Preparing activity:
DLA - CC

(Project 5935-2008-136)

NOTE: The activities listed above were interested in this document as of date of this document. Since organization and responsibilities can change, you should verify the currency of the information above using the ASSIST Online database at <http://assist.daps.dla.mil>.