

INCH-POUND

MS27266A
 17 June 2003
 SUPERSEDING
 MS27266
 11 February 1993

DETAIL SPECIFICATION SHEET

INSERT, ELECTRICAL CONNECTOR - RAMP POWER,
 416/240 VOLTS, MALE

This specification is approved for use by all Departments
 and Agencies of the Department of Defense.

The requirements for acquiring the product described
 herein shall consist of this specification and MIL-C-38159.

Inches	mm	Inches	mm	Inches	mm
.005	.127	.438	11.125	2.575	65.405
.010	.254	.562	14.287	2.640	67.056
.015	.381	.586	14.884	2.937	74.600
.031	.787	.588	14.935	3.125	79.375
.032	.813	.654	16.612	3.156	80.162
.062	1.575	.664	16.866	3.250	82.550
.093	2.362	.829	21.057	3.375	85.725
.125	3.175	1.000	25.400	3.531	89.687
.250	6.350	1.175	29.845	7.032	178.61
.350	8.890	1.302	33.071	8.218	208.74
.375	9.525	1.658	42.113		
.406	10.319	2.250	57.150		

NOTES:

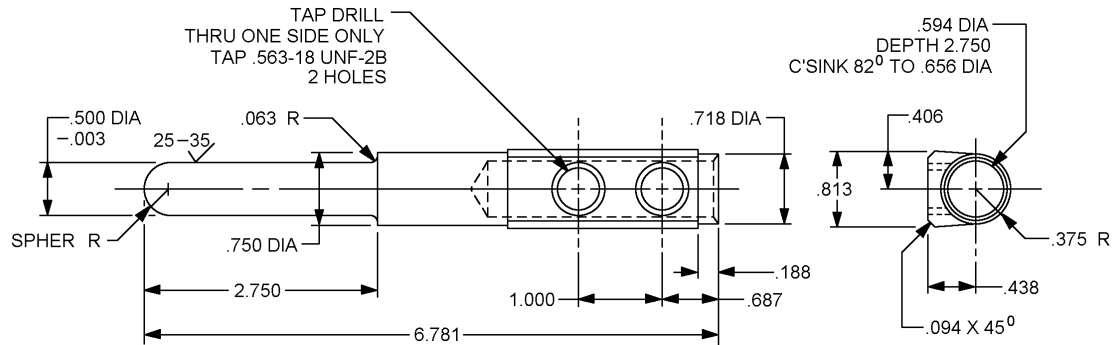
1. Dimensions are in inches.
2. The procurement specification for this part is MIL-C-38159.
3. Material: See procurement specification.
4. Remove all sharp edges.
5. Unless otherwise specified, tolerances on decimals are $\pm .010$ inch.
6. For design feature purposes, this standard takes precedence over procurement documents referenced herein.
7. Referenced documents shall be of the issue in effect on date of Invitation for Bid.
8. Part or Identifying Number (PIN): MS27266-1.
9. Electrical contact. See figure 2.
10. Electrical contact. See figure 3.

FIGURE 1. Configurations and dimensions for MS27266-1.



FIGURE 1. Configurations and dimensions for MS27266-1 - Continued.

MS27266A



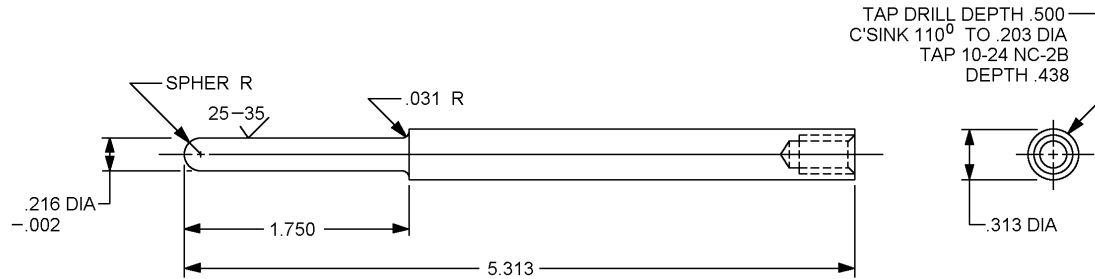
Inches	mm	Inches	mm
.003	.076	.594	15.081
.063	1.588	.656	16.669
.094	2.381	.687	17.450
.188	4.763	.718	18.237
.375	9.525	.750	19.050
.406	10.319	.813	20.638
.438	11.113	1.000	25.40
.500	12.700	2.750	69.85
.563	14.288	6.781	172.24

NOTES:

1. For use with PIN MS27266-1.
2. Procurement specification MIL-C-38159.
3. Material: Copper alloy – See procurement specification.
4. Finish: See procurement specification.
5. Unless otherwise specified, machined surfaces 125 $\sqrt{\text{in}}$ or better in accordance with ASME B46.1.
6. Remove all burrs and break all edges.
7. All dimensions shown are for finished part after plating.
8. Dimensions in inches. Unless otherwise specified, tolerances are ± 0.005 inch.
9. All diameters must be concentric to each other within 0.004 TIR.

FIGURE 2. Contact, electrical, plug connector, ramp power, 416/240 volts, large, male.

MS27266A



Inches	mm
.002	.051
.031	.794
.216	5.482
.313	7.938
1.750	44.45
5.313	134.94

NOTES:

1. For use with MS27266-1.
2. Procurement specification MIL-C-38159.
3. Material: Brass, in accordance with ASTM B 36/B36M, ASTM B 121/B 121M or ASTM 124/B124M. See procurement specification.
4. Finish: See procurement specification.
5. Unless otherwise specified, machined surfaces 125 \sqrt or better in accordance with ASME B46.1.
6. Remove all burrs and break all edges.
7. All dimensions shown are for finished part after plating.
8. Dimensions in inches. Unless otherwise specified, tolerances \pm 0.005 inch.
9. All diameters must be concentric to each other within 0.004 TIR.

FIGURE 3. Contact, electrical plug connector, ramp power, 416/240 volts, small, male.

MS27266A

(Marginal notations are not used in this revision to identify changes with respect to the previous issue due to the extent of the changes.)

CONCLUDING MATERIAL

Custodians:
Air Force - 11
DLA - CC

Preparing activity:
DLA - CC

(Project 5935-4427-007)