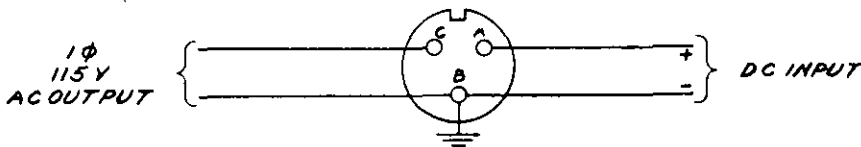
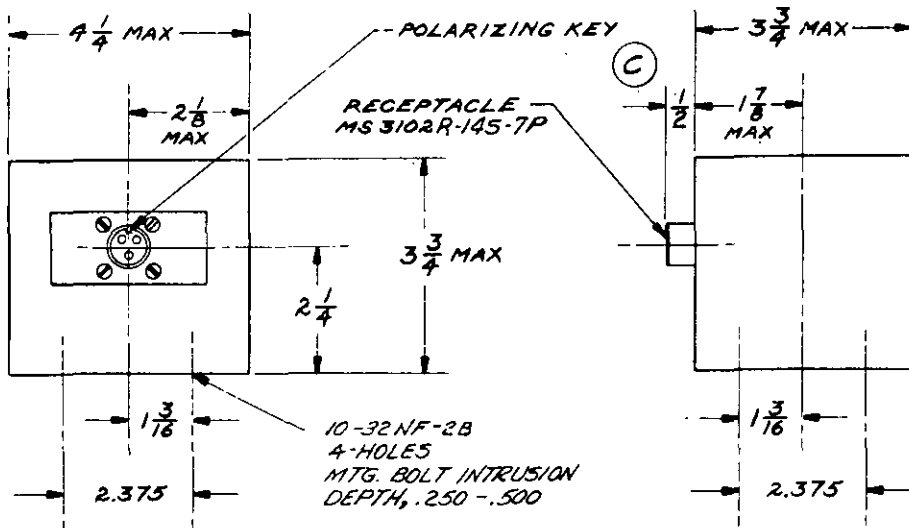


16 AUG 84

FED. SUP CLASS
6225



CONNECTION DIAGRAM

DETAIL REQUIREMENTS	
INPUT: VOLTS, DC	27.5
OUTPUT: VOLTS, AC	115
VA TO 60,000 FT	30
PF - MIN LAG, PERCENT	.75
PHASES	1
MIN EFFICIENCY, PERCENT AT FULL LOAD 0.75 PF, 1.0 PF	54 65
MAX WEIGHT, POUNDS	4.3

CONDITIONS	LIMITS - OUTPUT	
	VOLTAGE	FREQ (CPS)
INPUT VOLTAGE VARIED BETWEEN 26.0 AND 29.0V - LOAD VARIED FROM ZERO TO FULL LOAD - LOAD POWER FACTOR VARIED FROM 0.75 LAG TO UNITY AMBIENT TEMPERATURE-ALTITUDE OF -55° TO +85° C AT SEA LEVEL AND VARIED WITHIN THE RANGE ESTABLISHED BY CURVE I OF MS33543. THE UNIT SHALL DELIVER RATED POWER TO 60,000 FT. ALL VARIATIONS ABOVE EXCEPT WITH THE INPUT VOLTAGE WHICH MAY BE VARIED BETWEEN 18 AND 26V.	115 ±2.5	400 ±20
	105	400 ±20

FOR OVERLOADS IN EXCESS OF 150% OR FOR SHORT-CIRCUIT CURRENTS, THE INVERTER SHALL BE SELF-PROTECTIVE AND SHALL ASSUME NORMAL OPERATION AFTER THE FAULT IS CLEARED.
THE TOTAL HARMONIC CONTENT OF THE WAVE FORM SHALL NOT EXCEED 5%.

DIMENSIONS IN INCHES. UNLESS OTHERWISE SPECIFIED, TOLERANCES: FRACTIONS ±1/16, DECIMALS ±.010.
FOR DESIGN FEATURE PURPOSES, THIS STANDARD TAKES PRECEDENCE OVER PROCUREMENT DOCUMENTS REFERENCED HEREIN.
REFERENCED DOCUMENTS SHALL BE OF THE ISSUE IN EFFECT ON DATE OF INVITATIONS FOR BID.

ⓐ Canceled with No superseding standard

This standard has been approved by the Department of the Air Force and is mandatory for use by their activity. All other military activities are required to employ this standard where suitable.

P.A. Air Force -//	TITLE	INVERTER, POWER, STATIC ECU-16/A	MILITARY STANDARD	
Other Cust			MS 27260 (USAF)	
PROCUREMENT SPECIFICATION MIL-I-27273	SUPERSEDES:		SHEET 1	OF 1

APPROVED 4 JUNE 1962 REVISED 31 JULY 1963 12 FEBRUARY 1964 23 AUG 84