

INCH-POUND

MS27237E
 6 April 2001
 SUPERSEDING
 MS27237D
 22 September 2000
 (See page 3)

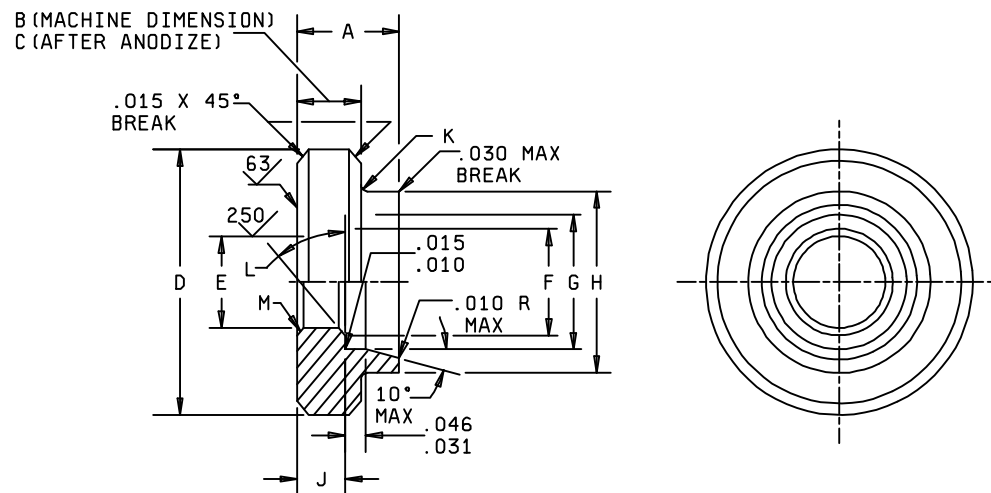
DETAIL SPECIFICATION SHEET

SHOULDER, SWIVEL FLANGE, ADAPTER, HOSE TO TUBE, HYDRAULIC FUEL AND OIL LINES.
 1/2 THROUGH 3 IN. TUBING SIZES

This specification is approved for use by all Departments and Agencies of the Department of Defense.

The requirements for acquiring the product described herein shall consist of this specification sheet and MIL-DTL-5070E.

REQUIREMENTS.

FIGURE 1. Shoulder illustration.

MS27237E

TABLE I. Shoulder composition.

PIN	A ±.015	B	C	D +.000 -.005 Dia	E Dia	F Dia	G Dia	H Dia	J	K ±.015 Rad	L	M
MS27237												
-8	.271			.875	.365	.420	.504 .501	.625 .610	.118 .113	.047		.030 x 45° break
-10				1.000	.490	.545	.629 .626	.750 .735				
-12		.156 .153	.156 .151	1.250	.615	.670	.754 .751	.938 .923			45°	-
-16				1.500	.865	.920	1.004 1.001	1.188 1.173				-
-20				1.844	1.115	1.170	1.254 1.251	1.500 1.485				-
-24		.188 .185	.188 .183	2.125	1.329	1.420	1.504 1.501	1.750 1.735			34°	-
-32				2.750	1.829	1.920	2.004 2.001	2.375 2.360				-
-40				3.281	2.180	2.295	2.379 2.376	2.875 2.860				-
-48				3.781	2.805	2.920	3.004 3.001	3.375 3.360				-

Intended Use. This part is a component of MS27227 and MS27229. This item shall not be procured for stocking purposes.

Dimensions and tolerances. Dimensions are in inches. Unless otherwise specified, tolerances are as follows: angles ±.5°; decimals ±.005. Break or radius all corners .010/.005 (max./min.). All diameters shall be concentric within .010 total indicator reading. Exempt 10° chamfer to 10° maximum.

Materials. Aluminum alloy 6061, T651, in accordance with SAE AMS-QQ-A-225/8.

Surface roughness. Unless otherwise specified, maximum surface roughness shall be 125 µin R_a in accordance with ASME B46.1.

Workmanship. Break all sharp edges and remove all burrs and slivers.

Identification of product. The PIN for this part shall be as shown in table I (e.g., MS27237-8).

Order of precedence. This specification sheet takes precedence over the documents referenced herein. Unless otherwise specified in the solicitation, referenced documents shall be of the issue in effect on the date of solicitation.

MS27237E

Supersession information. MS27237B (formerly identified as MS27237, Revision 2) was canceled by MS27237C (formerly identified as MS27237, Revision 3). MS27237B was reinstated by MS27237C, Notice 1, dated 22 September 2000. MS27237C was converted to a Detail Specification Sheet by MS27237D. Therefore, this document supersedes MS27237D.

CHANGES FROM PREVIOUS ISSUE. Marginal notations are not used in this revision to identify changes with respect to the previous issue, due to the extent of the changes.

Custodians:

Army - AT
Navy - AS
Air Force - 99
DLA - CC

Preparing activity:

DLA - CC

(Project 4730-2160)

Review activities:

Army - AV
Navy - MC, SA
Air Force - 11, 82