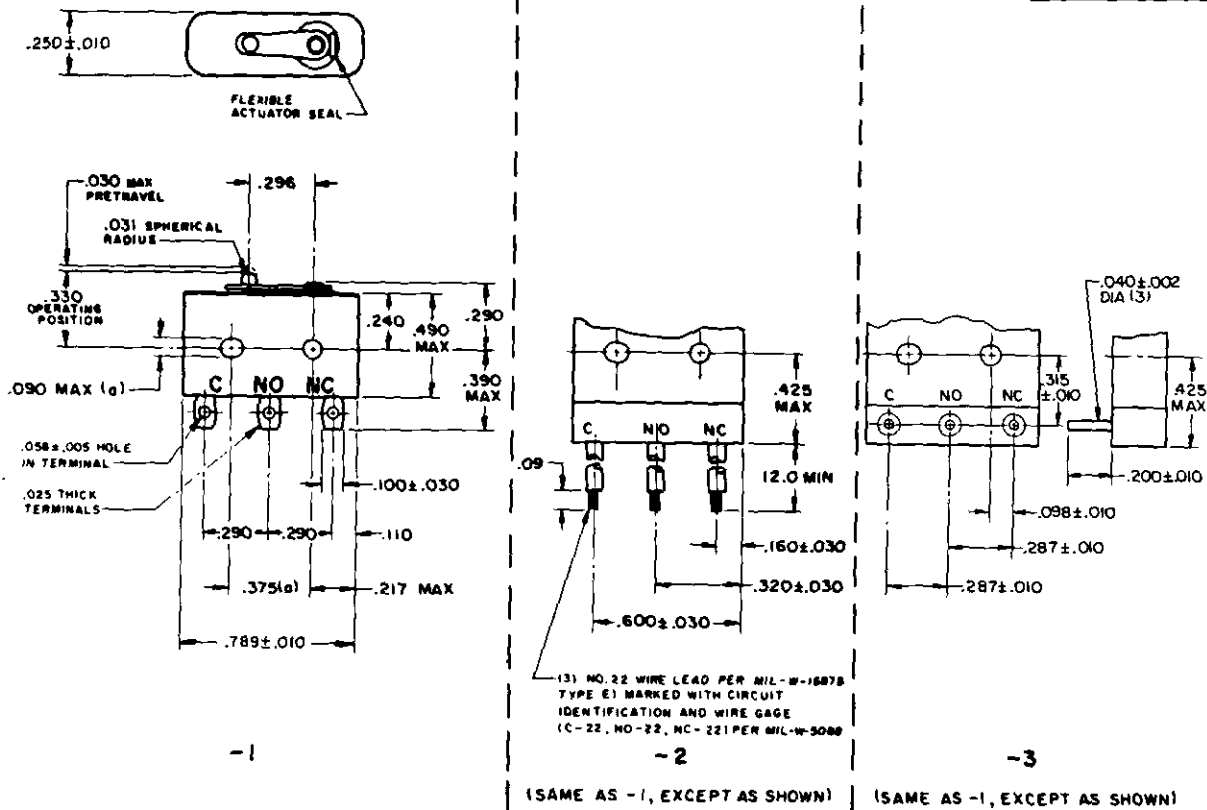


NOTICE: When drawings, specifications, or other data are used for any purpose other than in connection with a definitely related Government procurement operation, the United States Government thereby incurs no responsibility, nor any obligation whatsoever, and the fact that the Government may have furnished, furnished, or in any way supplied the said drawings, specifications, or other data is not to be regarded by implication or otherwise as in any manner licensing the holder or any other person or corporation, or conveying any rights or permission to manufacture, use, or sell any patented invention that may in any way be related thereto.



DASH NO.	TERMINATION	TEMPERATURE RANGE
-1	SOLDER Δ	-300° F TO +250° F
-2	WIRE LEAD	-85° F TO +250° F (-300° F TO +250° F IF WIRE LEADS ARE NOT FLEXED)
-3	CIRCUIT BOARD PLUG-IN Δ	-300° F TO +250° F

DETAIL REQUIREMENTS:

- (A) CONTACT ARRANGEMENT - SINGLE POLE DOUBLE THROW
 (B) RATED LOAD: (DC 28 VOLTS)
 RESISTIVE - - - - - 5 AMP
 INDUCTIVE - - - - - 3 AMP
 MOTOR - - - - - 4 AMP
 (C) MINIMUM OPERATING CYCLES - - - - - 25,000
 (D) ACTUATING FORCE - - - - - 7 OZ MAX
 (E) RELEASE FORCE - - - - - 1 OZ MIN
 (F) MOVEMENT DIFFERENTIAL - - - - - .006 MAX
 (G) PRETRAVEL - - - - - .030 MAX
 (H) OVERTRAVEL - - - - - .003 MIN
 (I) STRENGTH OF PLUNGER PIN AND PIN STOP - - - - - 10 LB
 (J) STRENGTH OF TERMINALS - - - - - 10 LB
 (K) MAXIMUM WEIGHT - - - - - (-1) AND (-3), .014 LB, (-2), .026 LB

(a) MOUNTING HOLES WILL ACCEPT PINS OR SCREWS OF .087 MAX DIA ON .375 ± .002 CENTERS. MOUNTING MEANS IS DIRECTLY INTERCHANGEABLE WITH MILITARY STANDARD PART MS25085

NOTE -

- 1- CIRCUITS MUST BE INTERRUPTED IN A CHAMBER HERMETICALLY SEALED BY A FUSION OF METAL TO METAL, GLASS TO METAL, CERAMIC TO METAL, OR A COMBINATION THEREOF. THE LEAKAGE RATE OF THIS DESIGN SHALL NOT EXCEED 1×10^{-9} ATMOSPHERES CC/SEC. AT A PRESSURE DIFFERENTIAL OF ONE ATMOSPHERE
 2- THE TERMINAL DESIGNATION SHALL BE PERMANENTLY AND LEGIBLY MARKED ON SWITCH ENCLOSURE
 3- TERMINALS ARE TINNED FOR SOLDERING
 4- EXACT SHAPE OF SWITCH OPTIONAL, PROVIDED DIMENSIONS SPECIFIED ARE NOT EXCEEDED
 5- DIMENSIONS IN INCHES, UNLESS OTHERWISE SPECIFIED, TOLERANCES ARE: DECIMALS ± .015
 6- THIS STANDARD TAKES PRECEDENCE OVER DOCUMENTS REFERENCED HEREIN
 7- REFERENCED DOCUMENTS SHALL BE OF THE ISSUE IN EFFECT ON DATE OF INVITATIONS FOR BID

Ⓐ CANCELLED FOR PROCUREMENT USE MIL-S-8805/8

P.A. AFLC/SGEE Other Cust	TITLE SWITCH, SENSITIVE - SUBMINIATURE HERMETICALLY SEALED	MILITARY STANDARD MS27216(USAF)
PROCUREMENT SPECIFICATION MIL-S-6743	SUPERSEDES:	SHEET 1 OF 1