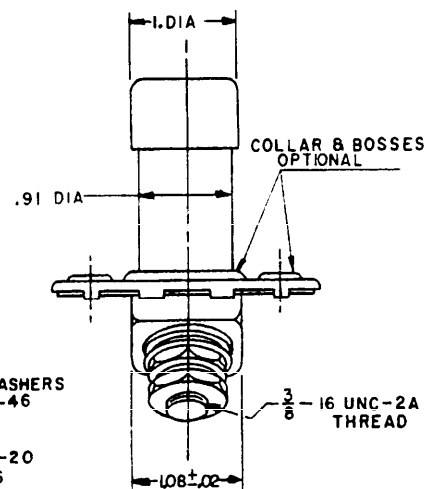
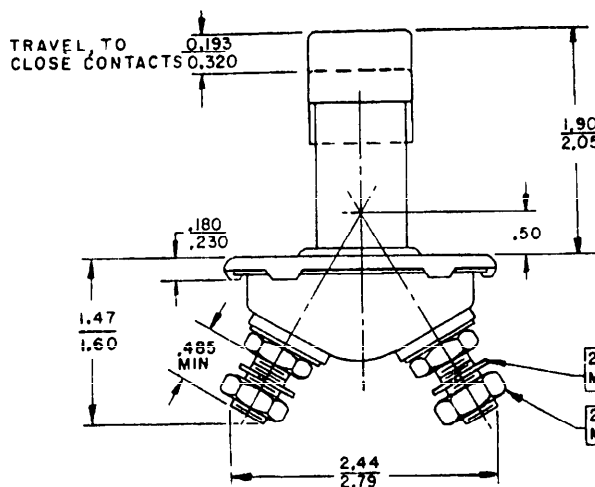
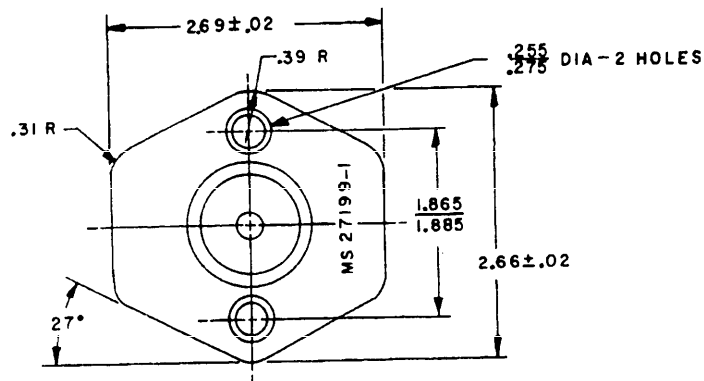


FED. SUP CLASS
5930REVIEW ACTIVITIES: ARMY-AT; NAVY-SH; DSA-ES
USER ACTIVITIES: ARMY-EL, ME

NOTES:

1. TYPE IV (SINGLE POLE, SINGLE THROW, HEAVY DUTY, NORMALLY OPEN), CLASS A (SLOW MAKE AND BREAK), GRADE 2 (OPEN) OF PROCUREMENT SPECIFICATIONS.
2. 300 AMP RESISTIVE LOAD, 150 AMP INDUCTIVE LOAD.
3. FORCE REQUIRED TO OPERATE THE SWITCH SHALL BE 12 ± 2 POUNDS.
4. SHALL WITHSTAND A MINIMUM OVERLOAD FORCE OF 300 POUNDS WITHOUT DAMAGE.
5. SHALL NOT EXCEED A MAXIMUM WEIGHT OF 11 OUNCES.
6. NUT SHALL NOT BE COATED WITH BLACK OXIDE.
7. THREADS SHALL BE IN ACCORDANCE WITH SCREW THREAD STANDARD FOR FEDERAL SERVICES HANDBOOK H28.
8. DIMENSIONS ARE IN INCHES. UNLESS OTHERWISE SPECIFIED, TOLERANCES ARE $\pm .01$ ON DECIMALS, $\pm 0^\circ 30'$ ON ANGLES.
9. FOR DESIGN FEATURE PURPOSES, THIS STANDARD TAKES PRECEDENCE OVER PROCUREMENT DOCUMENTS REFERENCED HEREIN.
10. THIS STANDARD IS NOT INTENDED TO LIMIT THE CONSTRUCTION TO FEATURES OTHER THAN AS SHOWN HEREON BY DIMENSIONS, NOTATIONS, AND REFERENCED DOCUMENTS.
11. REFERENCED DOCUMENTS SHALL BE OF THE ISSUE IN EFFECT ON DATE OF INVITATIONS FOR BID.
12. MARKING SHALL CONSIST OF THE MS PART NUMBER AND MANUFACTURER'S IDENTIFICATION IN ACCORDANCE WITH MIL-STD-130.

(B) ENTIRE STANDARD REVISED

MS PART NO. FORMER PART NO.
MS 27199-1 6200102

P.A. ARMY-AT	TITLE	MILITARY STANDARD
Other Cust NAVY-SH	SWITCH, PUSH-SPST, HEAVY DUTY, 24 VOLT DC	MS27199
PROCUREMENT SPECIFICATION MIL-S-13625	SUPERSEDES	SHEET 1 OF 1

This military standard is mandatory for use by all Departments, Agencies, and Commands of the Department of Defense. Selection for all new engineering and design applications and for repetitive use shall be made from this standard.

DD FORM 672-1 (Coordinated)

PREVIOUS EDITIONS OF THIS FORM ARE OBSOLETE

APPROVED 26 MARCH 1962 REVISED (A) 20 OCTOBER 1966 (B) 12 MARCH 1968