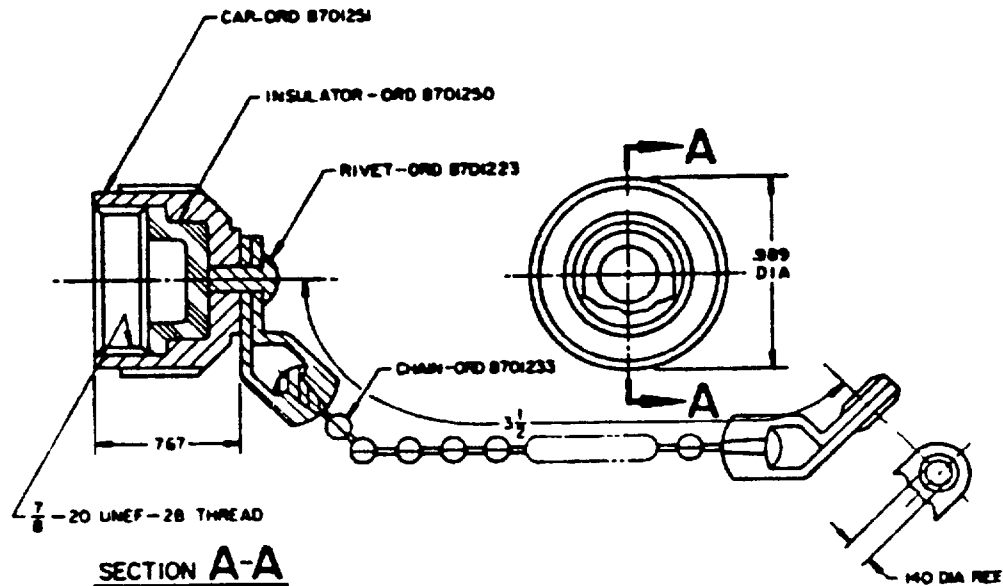


FED SUP CLASS  
5935

## REQUIREMENTS

- 1 CHAIN MUST MOVE FREELY ON CAP AFTER ASSEMBLY AND WITHSTAND A PULL OF 30 POUNDS
- (A) 2. THREADS SHALL BE IN ACCORDANCE WITH SCREW THREAD STANDARDS FOR FED-STD-H28
- 3 MARKING SHALL CONSIST OF THE MS PART NUMBER AND MANUFACTURER'S IDENTIFICATION IN ACCORDANCE WITH MIL-STD-130

## NOTES

- (A) 1. CAP AND CHAIN FOR USE WITH CONNECTOR MS27190
2. UNLESS OTHERWISE SPECIFIED, DIMENSIONS ARE IN INCHES AND ARE FOR ENGINEERING REFERENCE ONLY.
- (A) 3. REFERENCED GOVERNMENT DOCUMENTS OF THE ISSUE LISTED IN THAT ISSUE OF THE DEPARTMENT OF DEFENSE INDEX OF SPECIFICATIONS AND STANDARDS (DODISS) SPECIFIED IN THE SOLICITATION FORM A PART OF THIS STANDARD TO THE EXTENT SPECIFIED HEREIN
- (A) 4. IN THE EVENT OF A CONFLICT BETWEEN THE TEXT OF THIS STANDARD AND THE REFERENCES CITED HEREIN, THE TEXT OF THIS STANDARD SHALL TAKE PRECEDENCE
5. REFERENCED ARMY DRAWINGS MAY BE OBTAINED FROM THE US ARMY TANK-AUTOMOTIVE COMMAND, WARREN, MI 48397-5000.

(A) DENOTES CHANGES

MS PART NO.	FORMER PART NO.
MS 27193 -1	ORD 7388346

P A ARMY-AT Other Cost AF-17	INTERNATIONAL INTEREST	TITLE DUMMY CONNECTOR, PLUG-HIGH VOLTAGE	MILITARY STANDARD MS27193
PROCUREMENT SPECIFICATION NONE	SUPERSEDES	SHEET 1 OF 1	

DLA-FS

of the Department of Defense AMSC N/A  
DISTRIBUTION STATE A Approved for public release, distribution is unlimited

REVISED (A) 13 MAR 87

APPROVED 9 FEB 1982