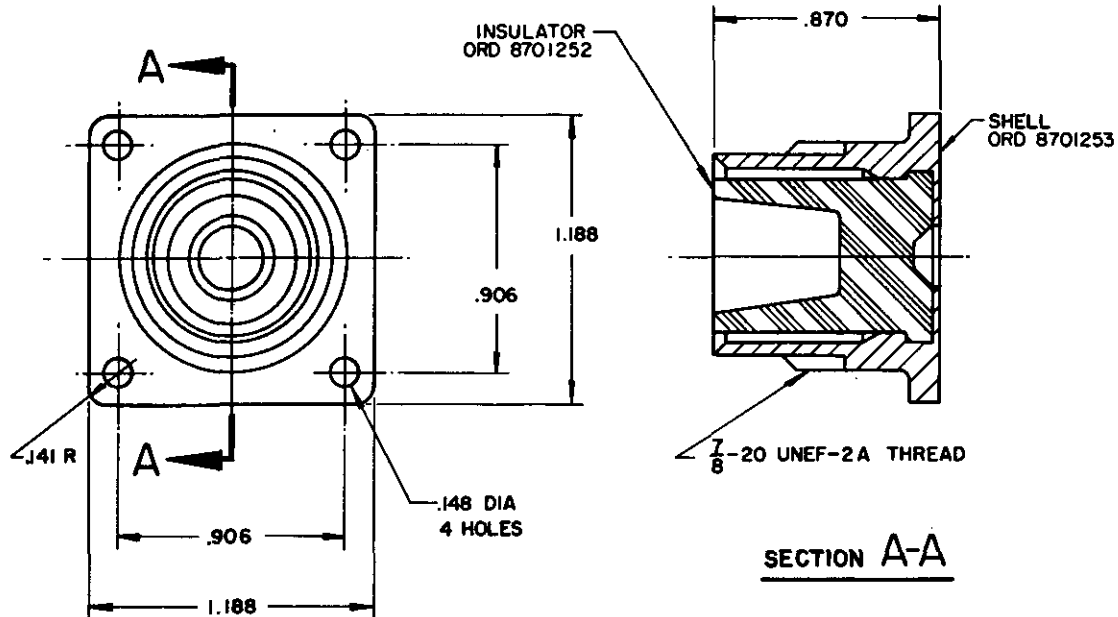


FED. SUP CLASS
5935

REVIEW ACTIVITY: DLA-ES



NOTES:

1. FOR DUMMY CONNECTOR PLUG SEE MS 27193.
2. DIMENSIONS SHOWN ARE IN INCHES AND FOR ENGINEERING REFERENCE ONLY.
3. MARKING SHALL CONSIST OF THE MS PART NUMBER AND MANUFACTURERS IDENTIFICATION IN ACCORDANCE WITH MIL-STD-130.
4. THREADS SHALL BE IN ACCORDANCE WITH SCREW THREAD STANDARDS FOR FEDERAL SERVICES HANDBOOK H 28.
5. REFERENCED DOCUMENTS SHALL BE OF THE ISSUE IN EFFECT ON DATE OF INVITATION FOR BID.
6. REFERENCED ORDNANCE DRAWINGS MAY BE OBTAINED FROM ARMY AUTOMOTIVE COMMAND.

(A) CANCELLED AFTER 24 NOVEMBER 1982.
NO SUPERSEDING STANDARD.

| | | | |
|-----------------------------------|------------------------------|-------------------|----------------|
| P.A. ARMY-AT | TITLE | MS PART NO | FORMER PART NO |
| Other Cust | DUMMY CONNECTOR, RECEPTACLE- | MS 27192 -1 | ORD 7388347 |
| AF-17 | HIGH VOLTAGE, WATERPROOF | MILITARY STANDARD | |
| PROCUREMENT SPECIFICATION NONE | SUPERSEDES: | MS 27192 | |
| | | SHEET | OF |