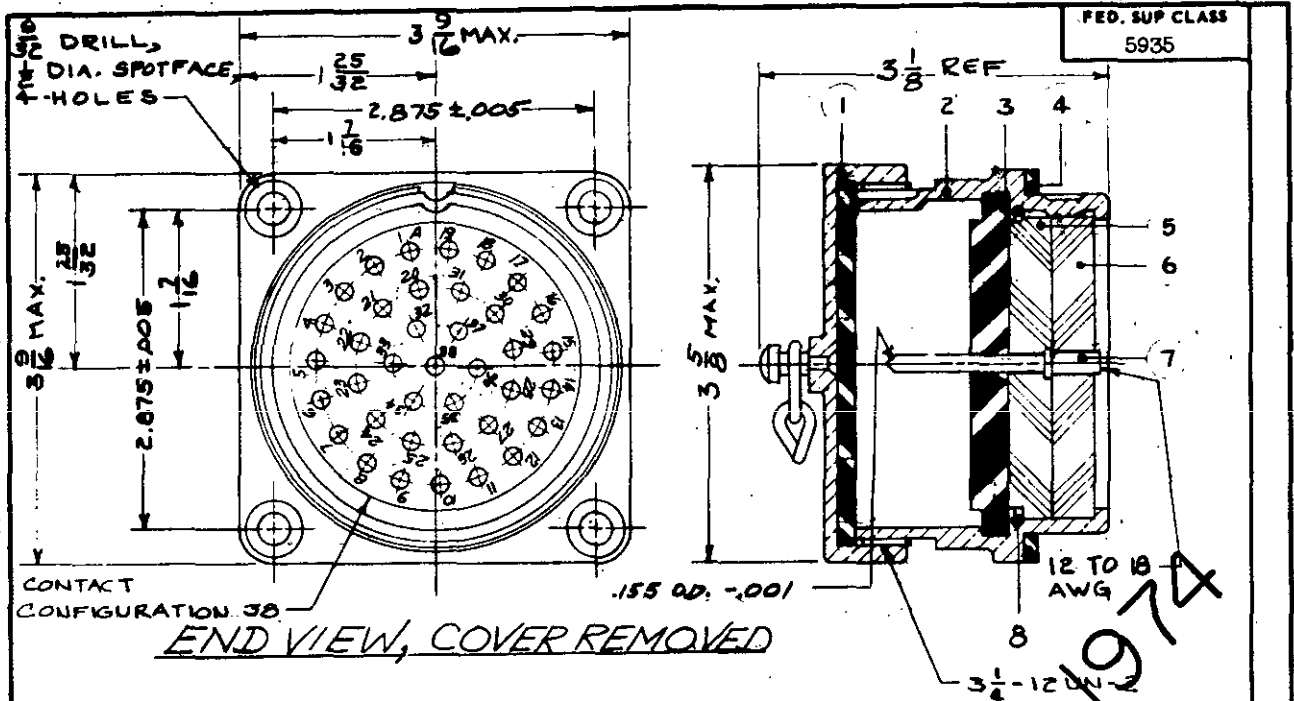


A12

NOTE.—When Government drawings, specifications, or other data are used for any purpose other than in connection with a definitely related Government procurement operation, the United States Government hereby incurs no responsibility, nor any obligation whatsoever, and the fact that the Government may have furnished, furnished, or in any way supplied the said drawings, specifications, or other data is not to be regarded by implication or otherwise as in any manner favoring the holder or any other person or corporation, or assuming any rights or privileges in manufacture, use, or sale of any patented invention that may in any way be related thereto.



FOR REFERENCE ONLY

COMPONENT	NOMENCLATURE	ORDNANCE PART NO.	NO. REQD
1	COVER, ELECTRICAL CONNECTOR (RIVETED AND CEMENTED)	6173147	1
2	SHELL, ELECTRICAL CONNECTOR	5578758	1
3	GASKET	7632541	1
4	GASKET	5183447	1
5	INSULATOR, DISK	7632542	1
6	INSULATOR, DISK	7632544	1
7	CONTACT, ELECTRICAL	7632546	38
8	RING, RETAINING	5183444	1

PART NUMBER
MS27182-1

NOTES:

- All dimensions in inches.
- Service Ratings (at sea level) = 200 DC volts.
= 150 AC volts.
= 30 amperes (max).
- For design feature purposes, this standard takes precedence over procurement documents referenced herein.
- Referenced documents shall be of the issue in effect on date of invitations for bid.

Engineering Data:

Refer to MS 2779 for matching female electrical plug connector.

ORD	TITLE	MILITARY STANDARD
Other Code SHIPS	CONNECTOR, RECEPTACLE, ELECTRICAL— 38 CONDUCTOR TYPE I, STYLE P (200 VDC, 30 A)	MS27182
PROCUREMENT SPECIFICATION MIL-C-27699	SUPERSEDES	SHEET 1 OF 1