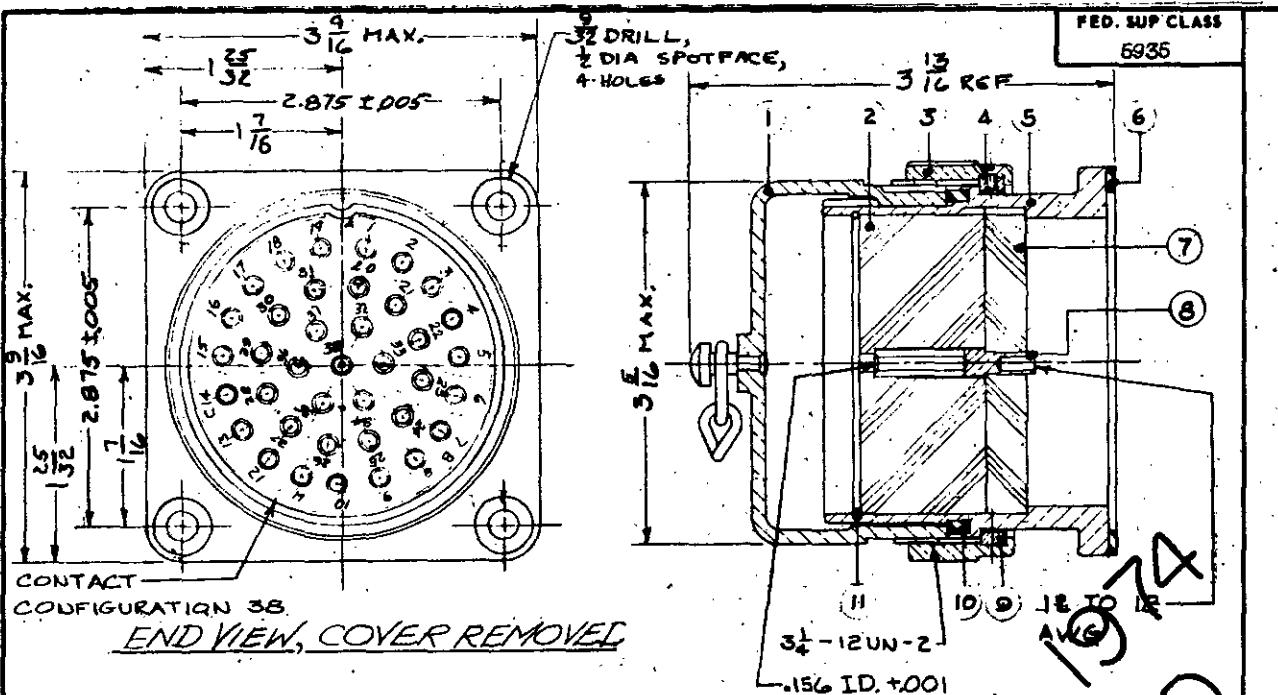


NOTICE—When Government drawings, specifications, or other data are used for any purpose other than in connection with a definitely related Government procurement operation, the United States Government hereby incurs no responsibility, nor any obligation whatsoever, and the fact that the Government may have furnished, furnished, or in any way supplied the said drawings, specifications, or other data is not to be regarded by implication or otherwise as in any manner licensing the holder to any other person or corporation, or conveying any rights or permission to manufacture, use, or sell any patented invention that may in any way be related thereto.



FOR REFERENCE ONLY

COMPONENT	NOMENCLATURE	ORDNANCE PART NO.	NO. REQD
1	COVER, ELECTRICAL CONNECTOR (RIVETED)	6173151	1
2	INSULATOR, DISK	7632543	1
3	NUT, COUPLING	6173153	1
4	SCREW, MACH. FLAT HD.	421387	4
5	SHELL, ELECTRICAL CONNECTOR	5578538	1
6	GASKET	5183447	1
7	INSULATOR, DISK	7632544	1
8	CONTACT, ELECTRICAL	7632545	36
9	SHOE	5183450	4
10	GASKET	5183448	1
11	RING, RETAINING	5183444	1

PART NUMBER

MS 27181-1

NOTES:

1. All dimensions in inches.
2. Service Ratings (at sea level):
 - 200 DC volts.
 - 150 AC volts.
 - 30 amperes (max).
3. For design feature purposes, this standard takes precedence over procurement documents referenced herein.
4. Referenced documents shall be of the issue in effect on date of invitations for bid.

Engineering Data

Refer to MS 27180

for matching male electrical plug connector.

P.A. ORD Other Cont	TITLE CONNECTOR, RECEPTACLE, ELECTRICAL - 38 CONDUCTOR TYPE I, STYLE 8 (200 VDC; 30A)	MILITARY STANDARD MS 27181
PROCUREMENT SPECIFICATION MIL -C- 27699	SUPERSEDES	SHEET 1 OF 1