

NOTICE—When Government drawings, specifications, or other data are used for any purpose other than in connection with a definitely related Government procurement operation, the United States Government thereby incurs no responsibility, nor any obligation whatsoever, and the fact that the Government may have furnished, furnished, or in any way supplied the said drawings, specifications, or other data is not to be regarded by implication or otherwise as in any manner licensing the holder or any other person or corporation, or conveying any rights or permission to manufacture, use, or sell any patented invention that may in any way be related thereto.

This military standard is approved by the Department of Defense and is mandatory on all activities. Selection for all new engineering and design applications and for repetitive use shall be made from this document.

COMPONENT		NOMENCLATURE	ORDNANCE PART NO.	NO. REQD.
1	COVER, ELECTRICAL CONNECTOR (RIVETED)		6173162	1
2	RING, RETAINING		5183444	1
3	INSULATOR, DISK		7632543	1
4	GASKET		5183448	1
5	NUT, COUPLING		6173161	1
6	CONTACT, ELECTRICAL		7632545	38
7	RING, RETAINING		5183454	1
8	SHELL, ELECTRICAL CONNECTOR		8206543	1
9	RING, CONNECTING, ROUND		5048706	1
10	SPRING, TORSION		5048702	1
11	ADAPTER		5183467	1
12	BUSHING, MOLDED		540631	1
13	GRIP, CABLE WOVEN		8206675	1
14	INSULATOR, DISK		7632544	1

NOTES:

- All dimensions in inches.
- Service Ratings (at sea level) — 200 DC volts.
— 150 AC volts.
— 30 amperes (max).
- For design feature purposes, this standard takes precedence over procurement documents referenced herein.
- Referenced documents shall be on the issue in effect on date of invitations for bid.

Engineering Data:

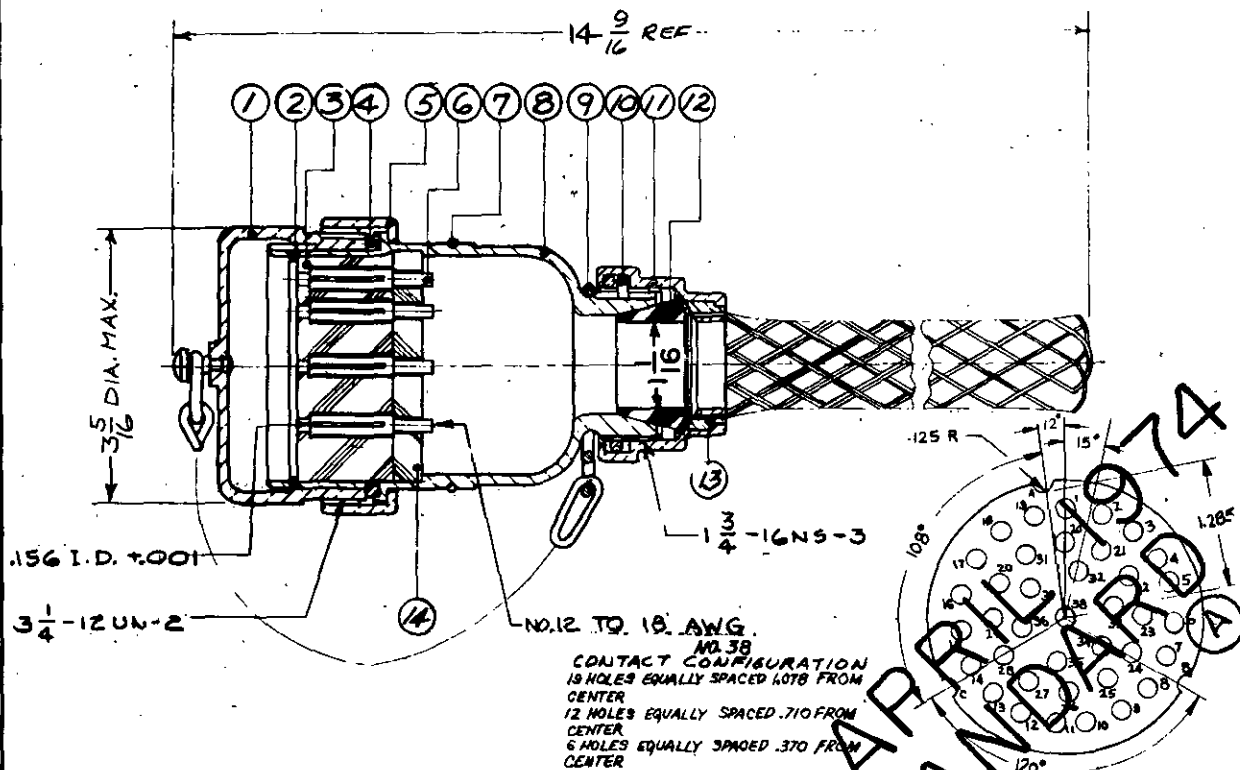
Refer to MS 27182 for matching male electrical receptacle connector.
Refer to MS 27180 for matching male electrical plug connector.

P.A. ORD	TITLE	MILITARY STANDARD
Other Cast SHIPS	CONNECTOR, PLUG, ELECTRICAL— 38 CONDUCTOR TYPE I, STYLE S, CLASS 1 (200 VDC ; 30 A)	MS 27179

PROUREMENT SPECIFICATION MIL-C-27699 SUPERSEDES: SHEET 1 OF 1

DD FORM 672-1 (Coordinated) PREVIOUS EDITIONS OF THIS FORM ARE OBSOLETE.

FED. SUP CLASS
5935



FOR REFERENCE ONLY

APPROVED 2 OCT 61 REVISED A 9 APRIL 1974