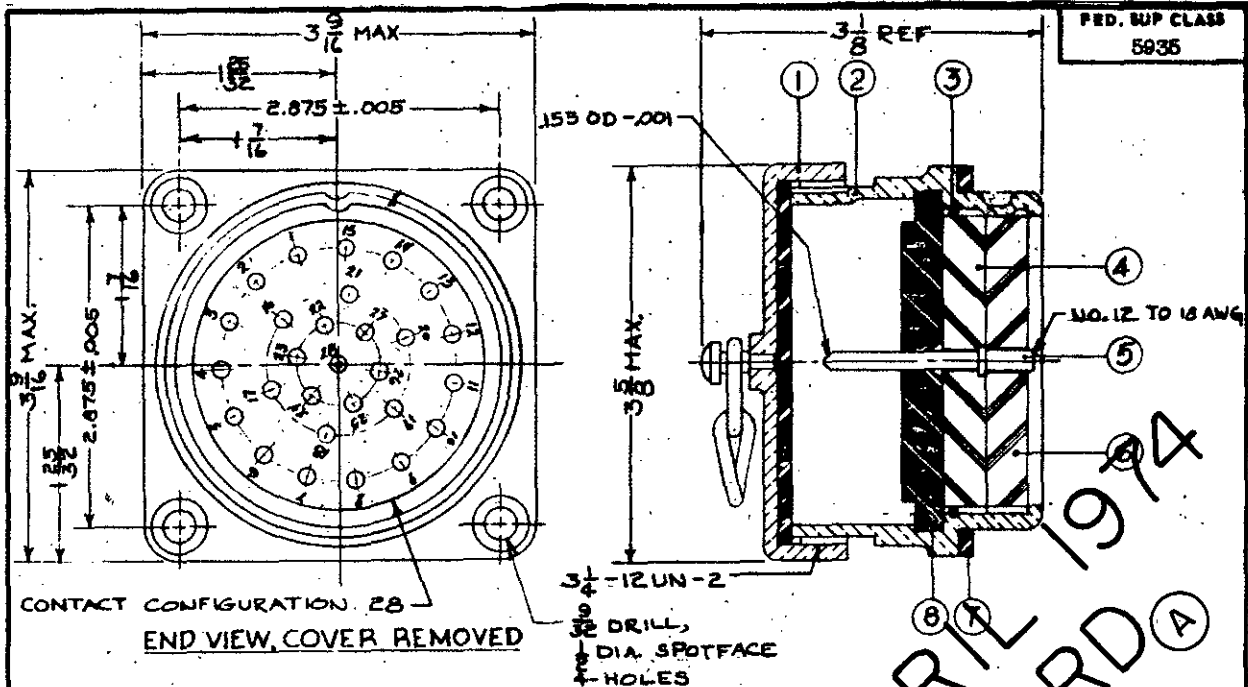


NOTICE.—When Government drawings, specifications, or other data are used for any purpose other than in connection with a definitely related Government procurement operation, the United States Government hereby incurs no responsibility, nor any obligation whatsoever; and the fact that the Government may have furnished, furnished, or in any way supplied the said drawings, specifications, or other data is not to be regarded by implication or otherwise as in any manner licensing the holder or any other person or corporation, or conveying any rights or permission to manufacture, use, or sell any patented invention that may in any way be related thereto.



FOR REFERENCE ONLY			
COMPONENT	NOMENCLATURE	ORDNANCE PART NO.	NO. REQD
1	COVER, ELECTRICAL CONNECTOR (RIVETED AND CEMENTED)	6173147	1
2	SHELL, ELECTRICAL CONNECTOR	5578758	1
3	RING, RETAINING	5183444	1
4	INSULATOR, DISK	7632547	1
5	CONTACT, ELECTRICAL	7632546	28
6	INSULATOR, DISK	7632550	1
7	GASKET	5183447	1
8	GASKET	7632548	1

PART NUMBER
MS27178-1

NOTES:

- All dimensions in inches.
- Service Ratings (at sea level) = 200 DC volts.
= 150 AC volts.
= 30 amperes (max).
- For design feature purposes, this standard takes precedence over procurement documents referenced herein.
- Referenced documents shall be of the issue in effect on date of invitations for bid.

Engineering Data:

Refer to MS 27175 for matching female electrical plug connector.

P.A. ORD Other Cast SHIPS	TITLE CONNECTOR, RECEPTACLE, ELECTRICAL- 28 CONDUCTOR TYPE I, STYLE P (200 VDC; 30 A)	MILITARY STANDARD MS27178
PROCUREMENT SPECIFICATION MIL-C-27699	SUPERSEDES:	SHEET 1 OF 1