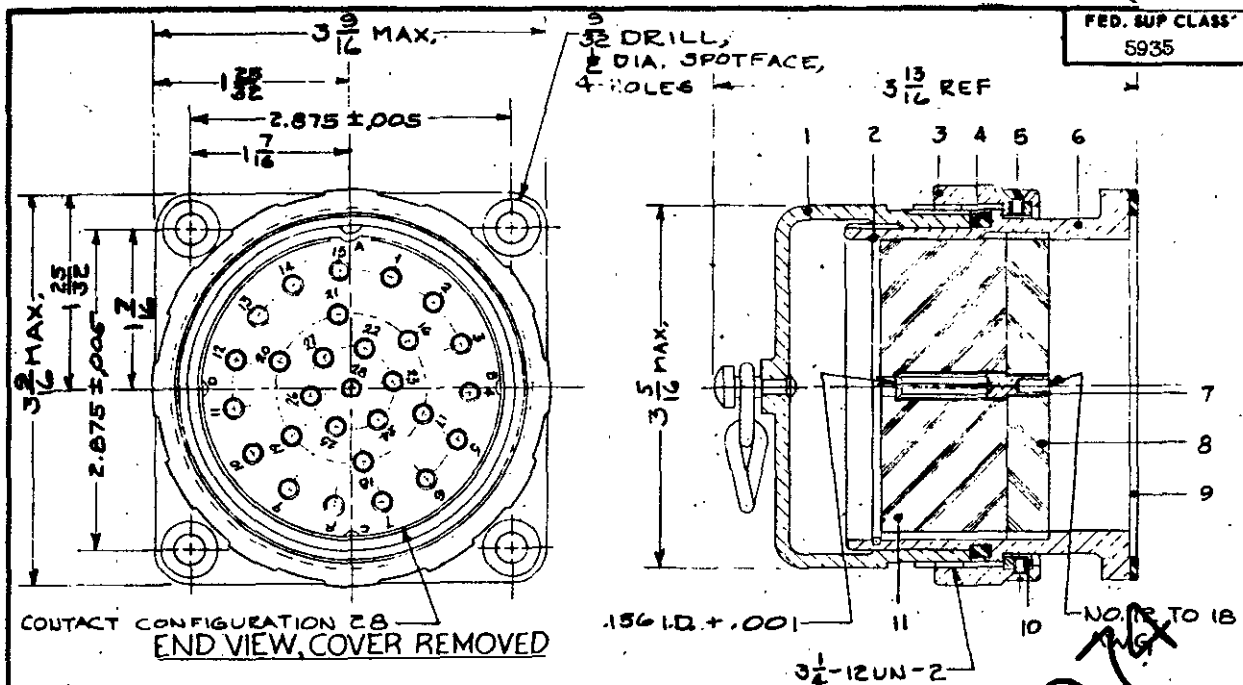


NOTICE—When Government drawings, specifications, or other data are used for any purpose other than in connection with a definitely related Government procurement operation, the United States Government hereby incurs no responsibility, nor any obligation whatsoever, and the fact that the Government may have furnished, furnished, or in any way supplied the said drawings, specifications, or other data is not to be regarded by implication or otherwise as in any manner favoring the holder or any other person or corporation, or carrying any right or permission to manufacture, sell, or sell any patented invention that may in any way be related thereto.



## FOR REFERENCE ONLY

COMPONENT	NOMENCLATURE	ORDNANCE PART NO.	NO. REQD
1	COVER, ELECTRICAL CONNECTOR (RIVETED)	6173151	1
2	RING, RETAINING	5183444	1
3	NUT, COUPLING	6173153	1
4	GASKET	5183448	1
5	SCREW, MACH. FLAT HD.	421387	4
6	SHELL, ELECTRICAL CONNECTOR	5578538	1
7	CONTACT, ELECTRICAL	7632545	28
8	INSULATOR, DISK	7632550	1
9	GASKET	5183447	1
10	SHOE	5183450	4
11	INSULATOR, DISK	7632549	1

PART NUMBER

MS 27177-1

## NOTES:

- All dimensions in inches.
- Service Ratings (at sea level) = 200 DC volts.  
150 AC volts.  
30 amperes (max).
- For design feature purposes, this standard takes precedence over procurement documents referenced herein.
- Referenced documents shall be of the issue in effect on date of invitations for bid.

## Engineering Data

Refer to MS 27176 for matching male electrical plug connector.

P.A. ORD Other Cnst SHIPS	TITLE CONNECTOR, RECEPTACLE, ELECTRICAL— 28 CONDUCTOR TYPE I, STYLE S (200 VDC ; 30A)	MILITARY STANDARD MS 27177
PROCUREMENT SPECIFICATION MIL-C-27699	SUPERSEDES:	SHEET 1 OF 1